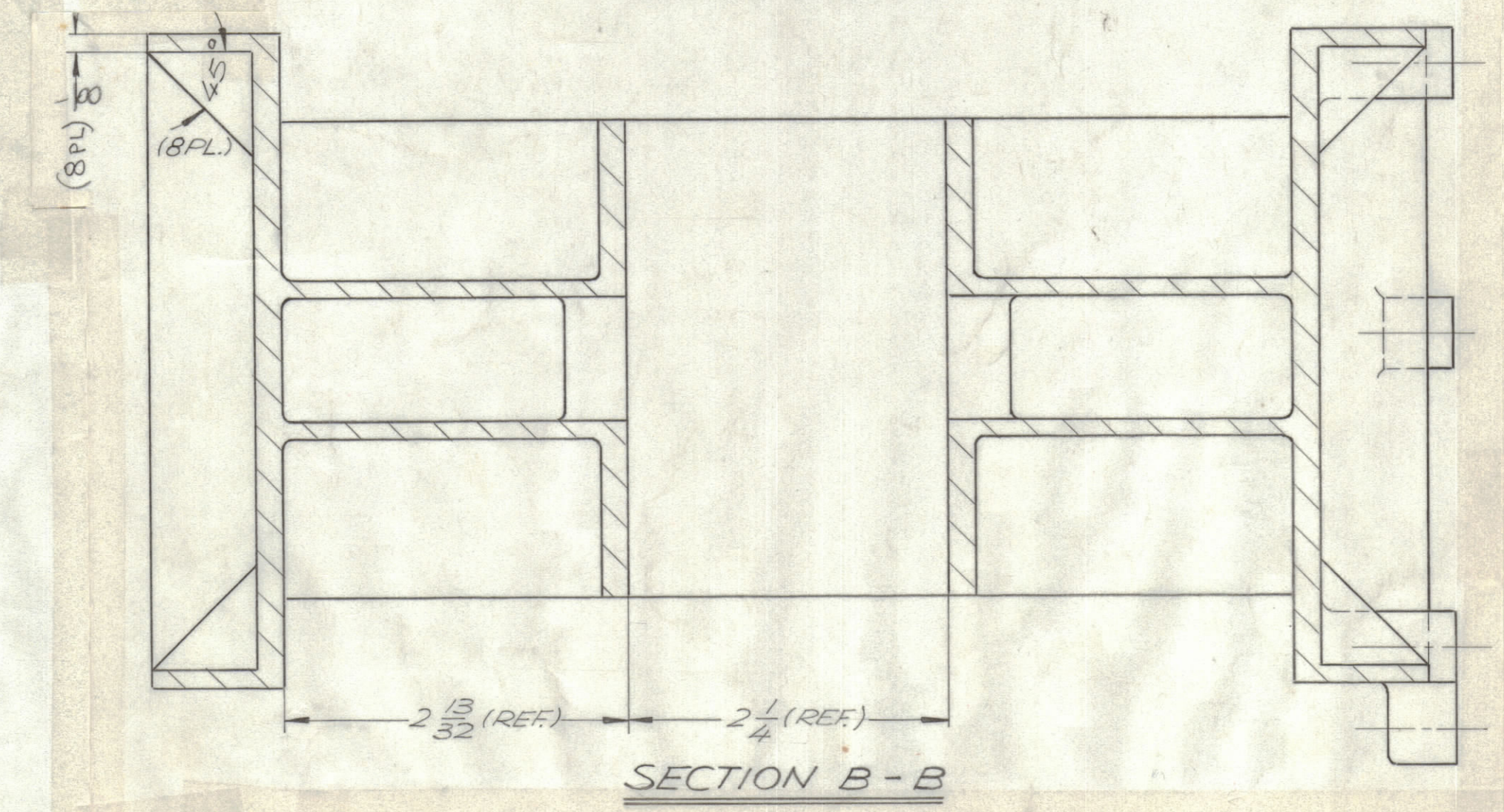
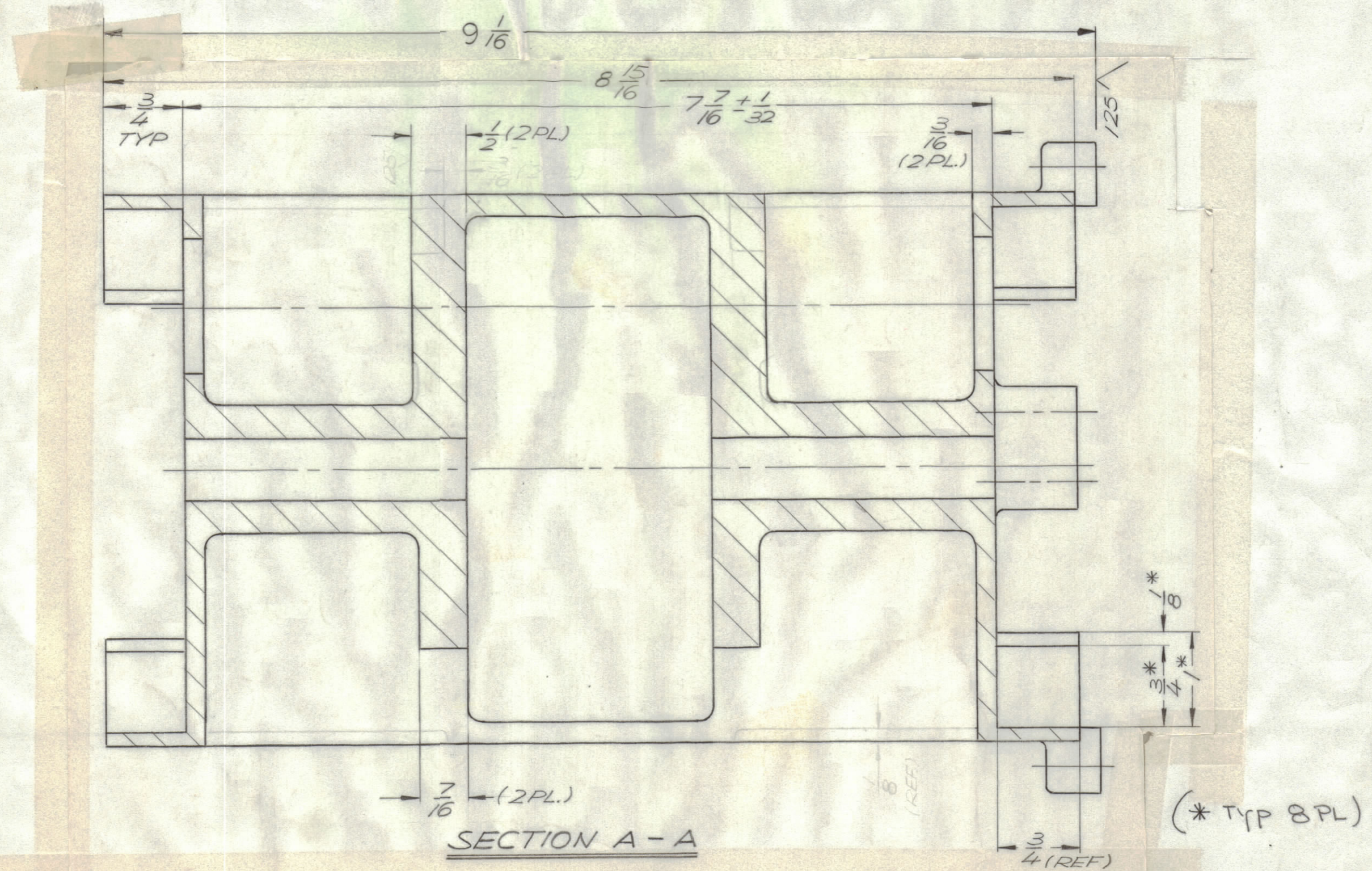
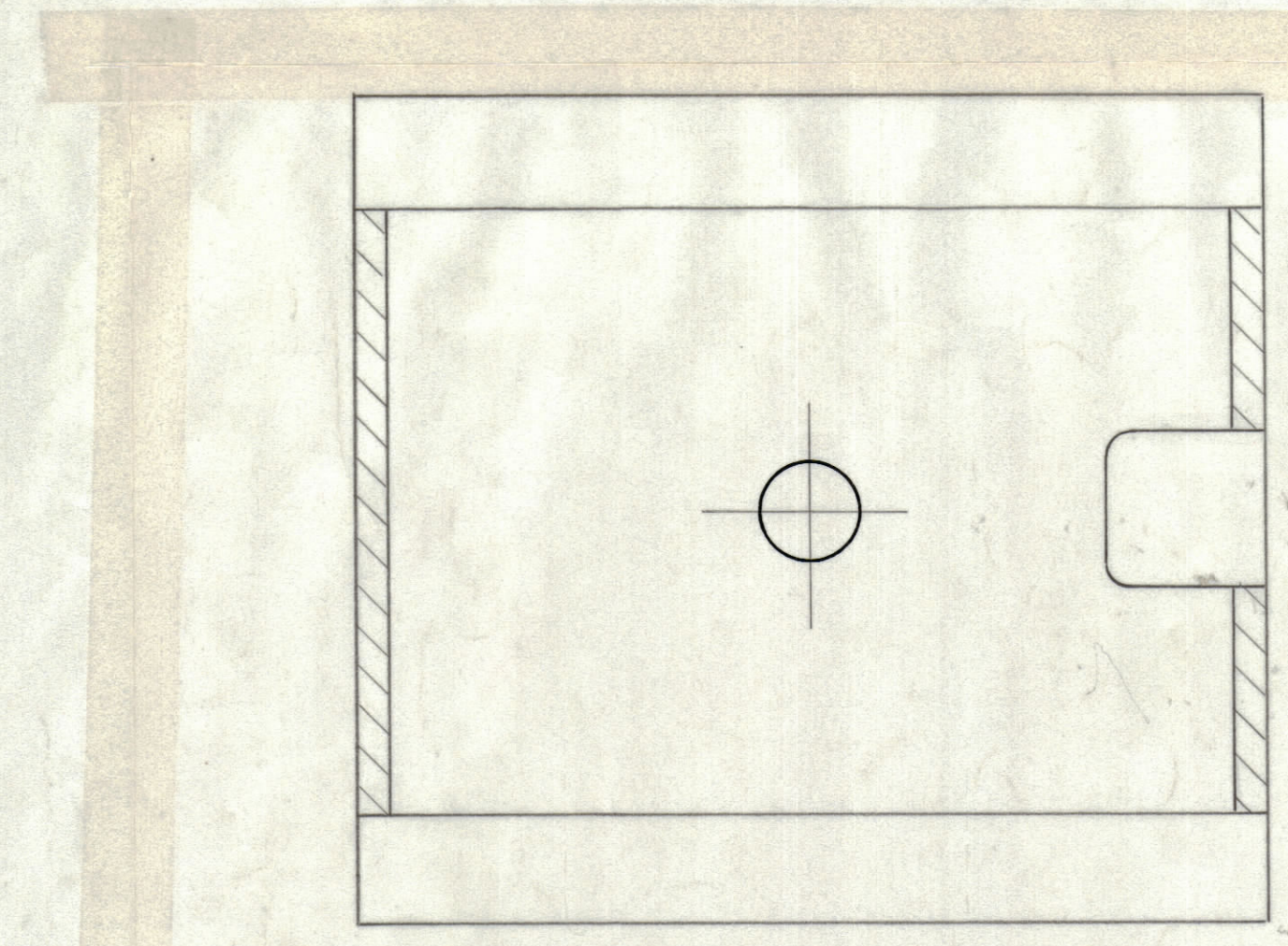
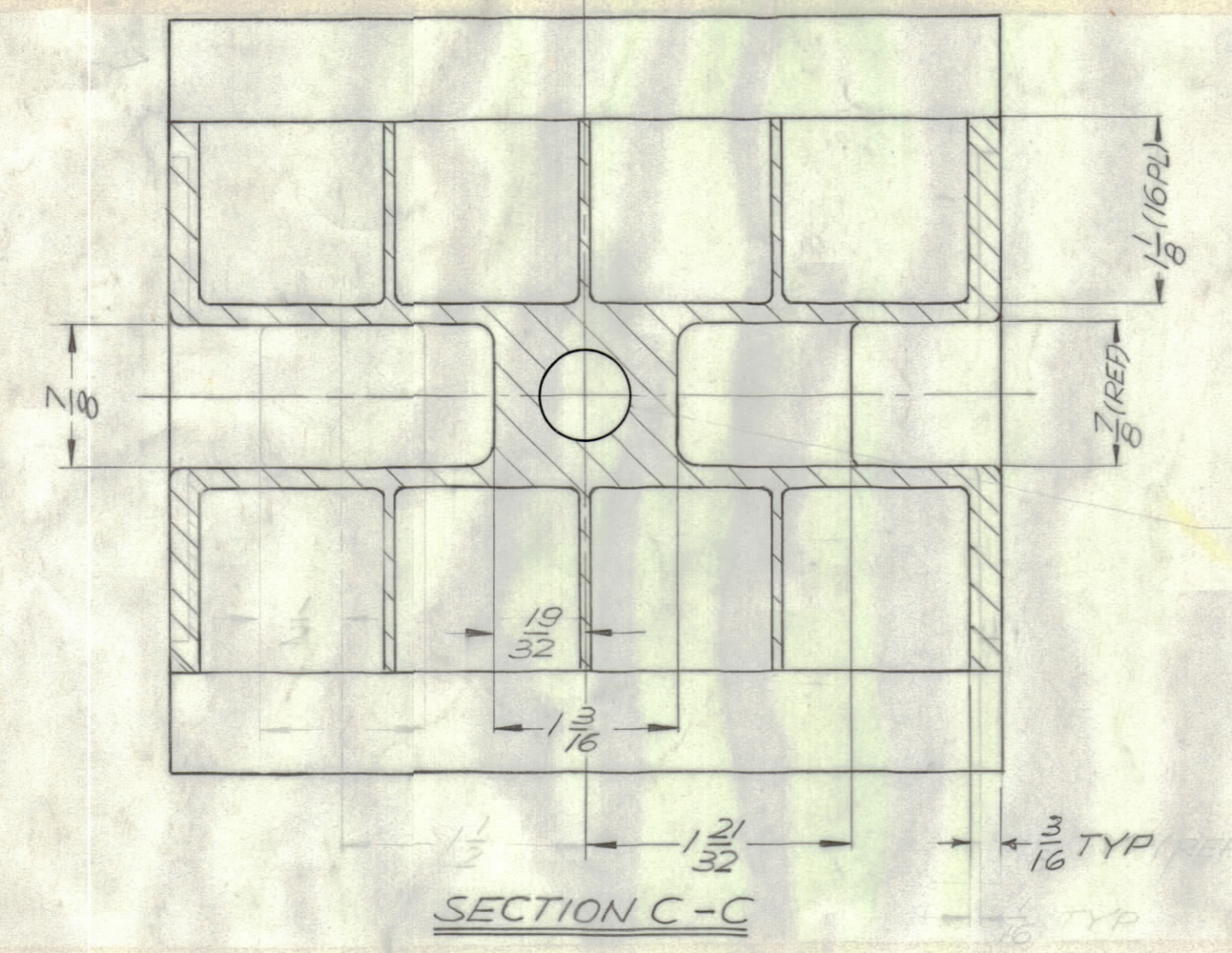


		REVISIONS					
ZONE	LTR	DESCRIPTION	DATE	E.M.N. NO.	DRAFT	CHKD	APPD
X		EXP. RELEASE	10/3/68		L.H.		
Ø		ORIGINAL RELEASE FOR PRODUCTION	11-6-68		R.G.		
A		CHANGED TO CONFORM WITH CASTING PATENT 12-5-68	12-5-68	13118	D.A.C.		
B		SEE SHEET 1 OF 2	3-20-69	19366	GE		
C		ADD DIM 9 1/16 DELE REF NT.	7-13-69	19505	GE		
D		SEE SHEET 1 OF 2	4-23-70	19826	GH		



REF: PM 1371

QTY. REQ.	ITEM	PART NO.	DESCRIPTION	SYMBOL
LIST OF MATERIAL				
			THE TECHNICAL MATERIEL CORP. MAMARONECK, NEW YORK	
			CASTING, RF, TUNER	
FINAL APPROVAL		DATE		
MECH. DES.		DATE		
ELECT. DES.		DATE		
CHECKED		DATE		
DRAWN		DATE		
SIZE	CODE	IDENT. NO.	DWG. NO.	ISSUE
D	82679	CS135		D
SCALE				SHEET 2 OF 2

HFRR-4		
QTY / UNIT	MODEL USED ON	ASS'Y NO.
APPLICATION		
CODE	S401 - 493	
MATERIAL		
FINISH		

UNLESS OTHERWISE SPECIFIED DIMENSIONS ARE IN INCHES AND INCLUDE CHEMICALLY APPLIED OR PLATED FINISHES

TOLERANCES ON

DECIMALS	FRACTIONS
.X ± .05	± 1/64
.XX ± .01	ANGLES
.XXX ± .005	± 0° - 30'

NOTICE TO PERSONS RECEIVING THIS DRAWING

THE TECHNICAL MATERIEL CORPORATION claims proprietary right in the material disclosed herein. This drawing is issued in confidence for engineering information only and may not be reproduced or used to manufacture anything shown herein without permission from THE TECHNICAL MATERIEL CORPORATION to the user. This drawing is loaned for mutual assistance and is subject to recall at any time.