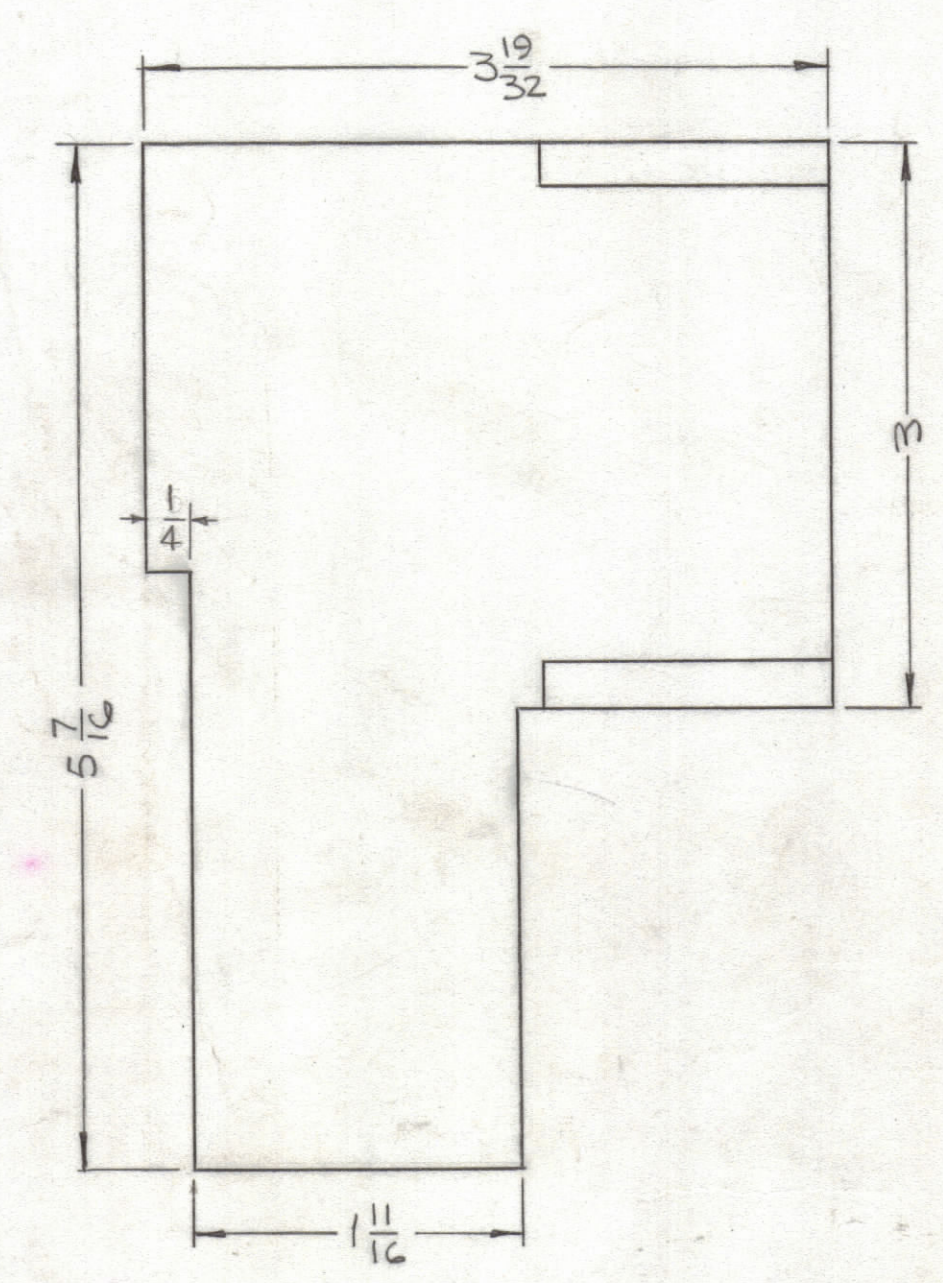
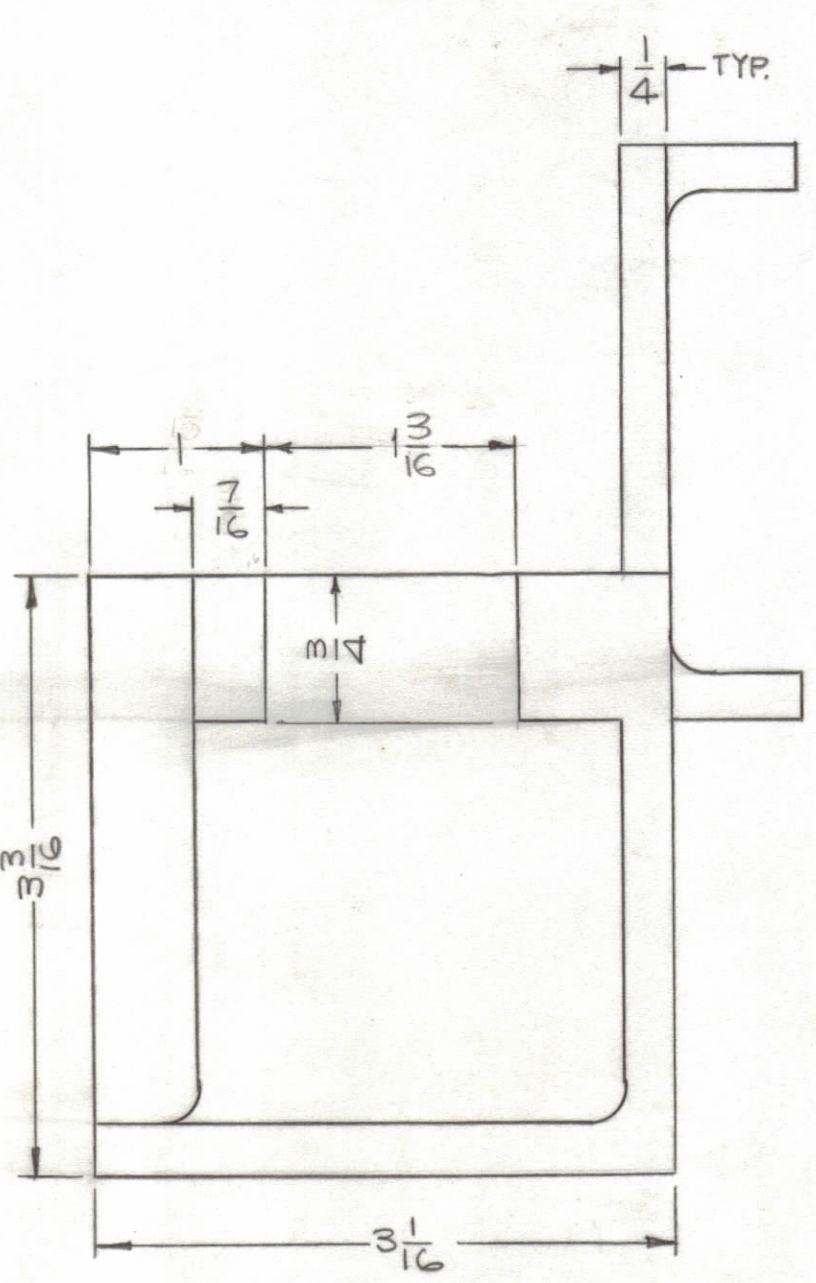
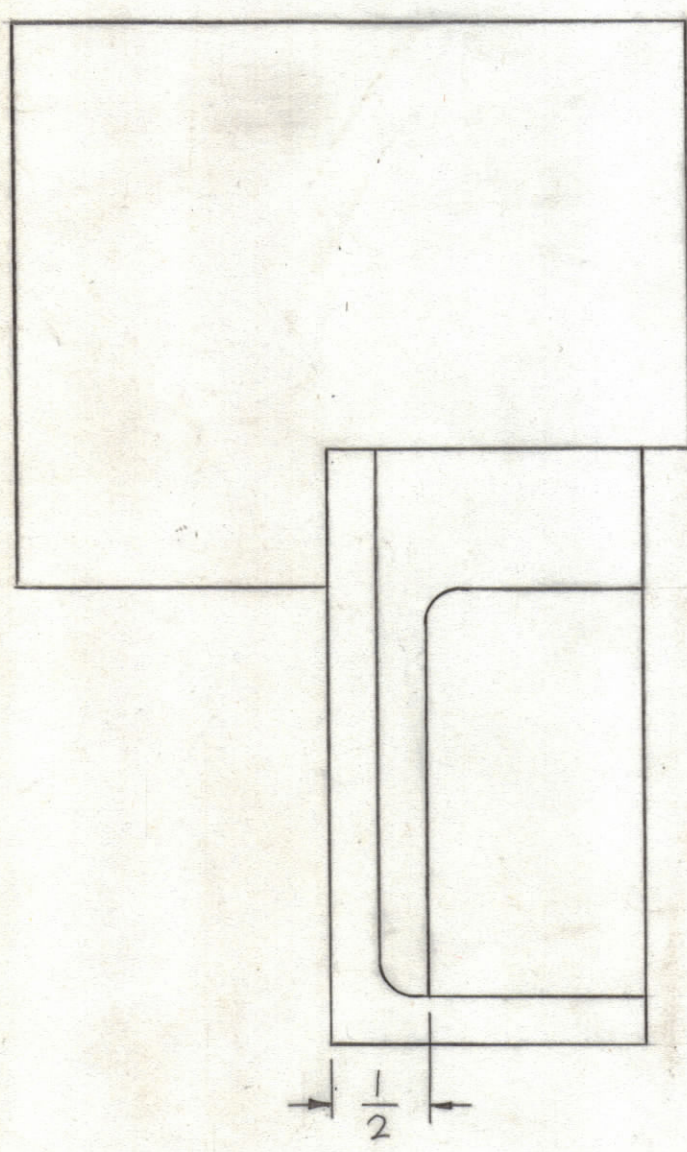
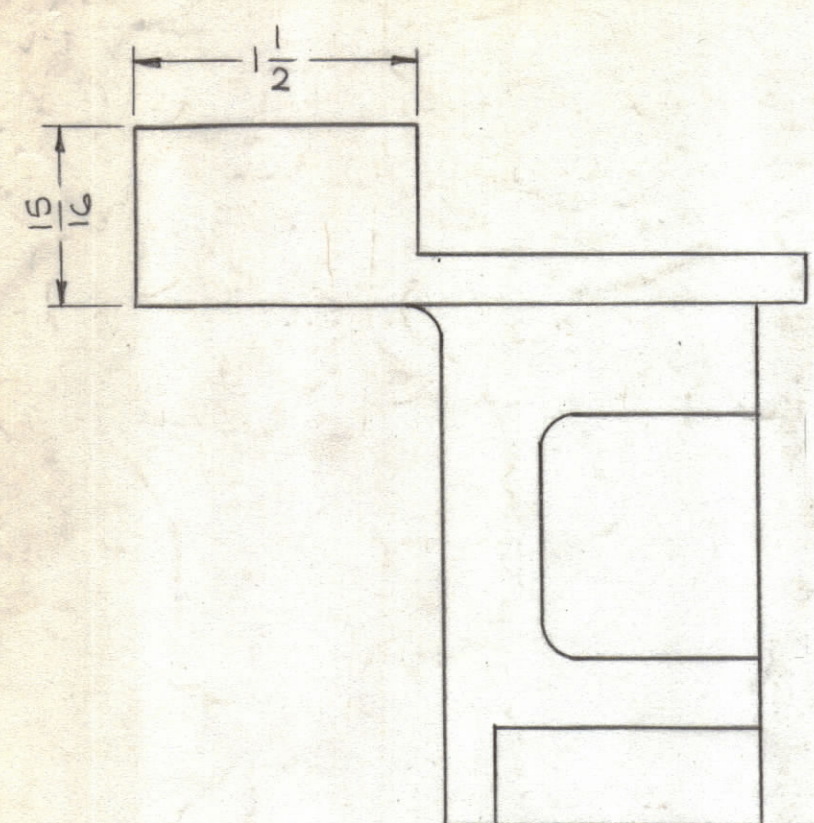


REVISIONS					
ZONE	SYM	DESCRIPTION	DATE	E.M.N. NO.	APPD
	X1	DIM 1" WAS 15/16, 1-3/16 WAS 1-7/16, 1/4 ADDED	5-17-65	X1	SRG
	Ø	ORIGINAL RELEASE FOR PRODUCTION	8/23/66	Ø	CV



NOTES:
 CASTING TO BE FREE OF POROSITY AND SAND HOLES.
 ALL SURFACES TO BE SMOOTH SANDBLAST.
 NO DRAFT REQ.

REF: PM 1264
 REF: PM 1277

REQ'D.	ITEM	PART NUMBER	DESCRIPTION	SYMBOL
F. BUDETTI LIST OF MATERIAL				
MATERIAL		ALUMINUM, 356-T6, STRESS RELIEVED		
FINISH		SEE MACHINING		
THE TECHNICAL MATERIEL CORP.		MAMARONECK, NEW YORK		
TITLE		CASTING, BANDSWITCH GEAR BOX		
DRAWN	SRG	DATE	5-13-65	FINAL APPROVAL
CHECKED		DATE		
ELECT. DES.	ag	DATE	5/19/66	REV. LTR.
MECH. DES.		DATE		
SHEET		CS132		

QTY./UNIT	MODEL USED ON	ASS'Y. NO.
1	TST () 10K	
SCALE	CODE	
1:1	A	

NOTES

THE CONTENTS OF THIS DRAWING ARE THE EXCLUSIVE PROPERTY OF THE TECHNICAL MATERIEL CORP. ITS UNAUTHORIZED USE OR REPRODUCTION IN WHOLE OR IN PART IS STRICTLY FORBIDDEN.

UNLESS OTHERWISE SPECIFIED DIMENSIONS ARE IN INCHES AND INCLUDE CHEMICALLY APPLIED OR PLATED FINISHES

DECIMALS: .X ± .05, .XX ± .01, .XXX ± .005
 FRACTIONS: ± 1/64 ANGLES: ± 0° 30'

CS132