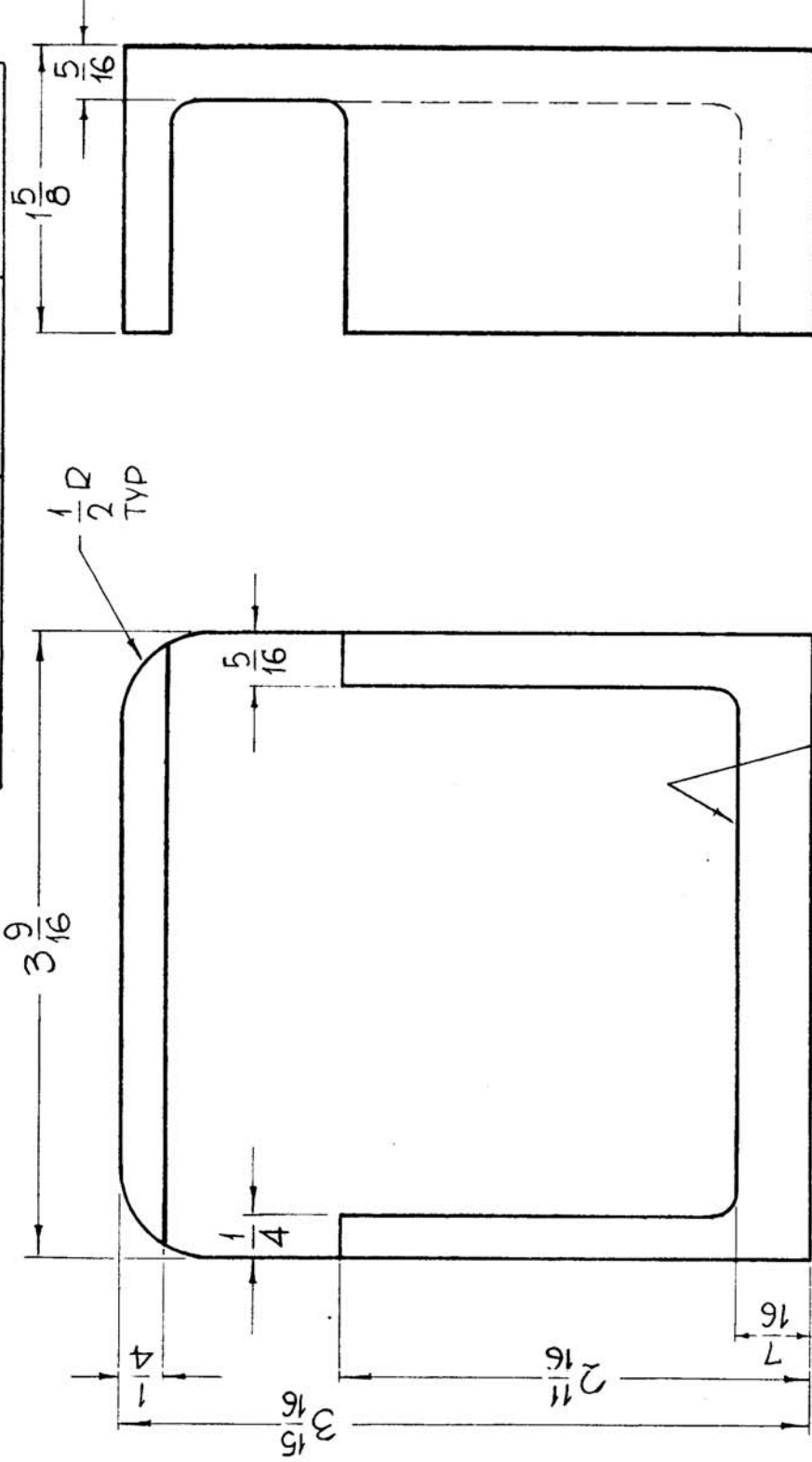


THE CONTENTS OF THIS DRAWING ARE THE EXCLUSIVE PROPERTY OF THE TECHNICAL MATERIEL CORP. ITS UNAUTHORIZED USE FOR REPRODUCTION IN WHOLE OR IN PART IS STRICTLY FORBIDDEN.

| RE. PER UNIT | MODEL             | USED ON ASSY. NO. | DATE    |
|--------------|-------------------|-------------------|---------|
| 1            | GPT-200K (AX-395) | A-3202            | 6-13-63 |
| 1            | GPT-200K (AX-395) | A-3204            | 6-13-63 |

CS-130 0



METAL STAMP TMC PART NO. 1/8 HIGH GOTHIC, (CS-130-0)

UNLESS OTHERWISE SPECIFIED ALL FILLETS AND ROUNDS 1/8R

REF. MACHINGS, TMC NO. PM-925, PM-926

|                    |                   |               |   |                |
|--------------------|-------------------|---------------|---|----------------|
| REQ. ITEM          | PART NO.          | F. BUDETTI    | DESCRIPTION                                       | SYMBOL         |
| SIZE AS NOTED      |                   |               | THE TECHNICAL MATERIEL CORP. MAMARONECK. NEW YORK |                |
| STOCK SIZE         |                   |               | CASTING, COUNTER REDUCTION BOX                    |                |
| MATERIAL           |                   |               | ALUMINUM  |                |
| 356-T-6            |                   |               | John C. Biele                                     | 4-6-64         |
| TYPE & TEMPER      | HEAT TREAT. SPEC. | DRAWN         | CHECKED   | FINAL APPROVAL |
| NONE               |                   | John C. Biele | AA gcb  | CS-130 0       |
| FINISH & SPEC. NO. |                   |               | ELEC. DES. APP. MECH. DES. APP.                   |                |

UNLESS OTHERWISE SPECIFIED DIMENSIONS ARE IN INCHES AND INCLUDE CHEMICALLY APPLIED OR PLATED FINISHES

DECIMALS  
X ± .05  
.XX ± .01  
.XXX ± .005

FRACTIONS  
± 1/64  
ANGLES,  
± 0°-30'

TOLERANCES

SCALE 4/3/64

DATE

CH. NO.

DRAFTS

CHECKER

ENG. APP.

CODE A