

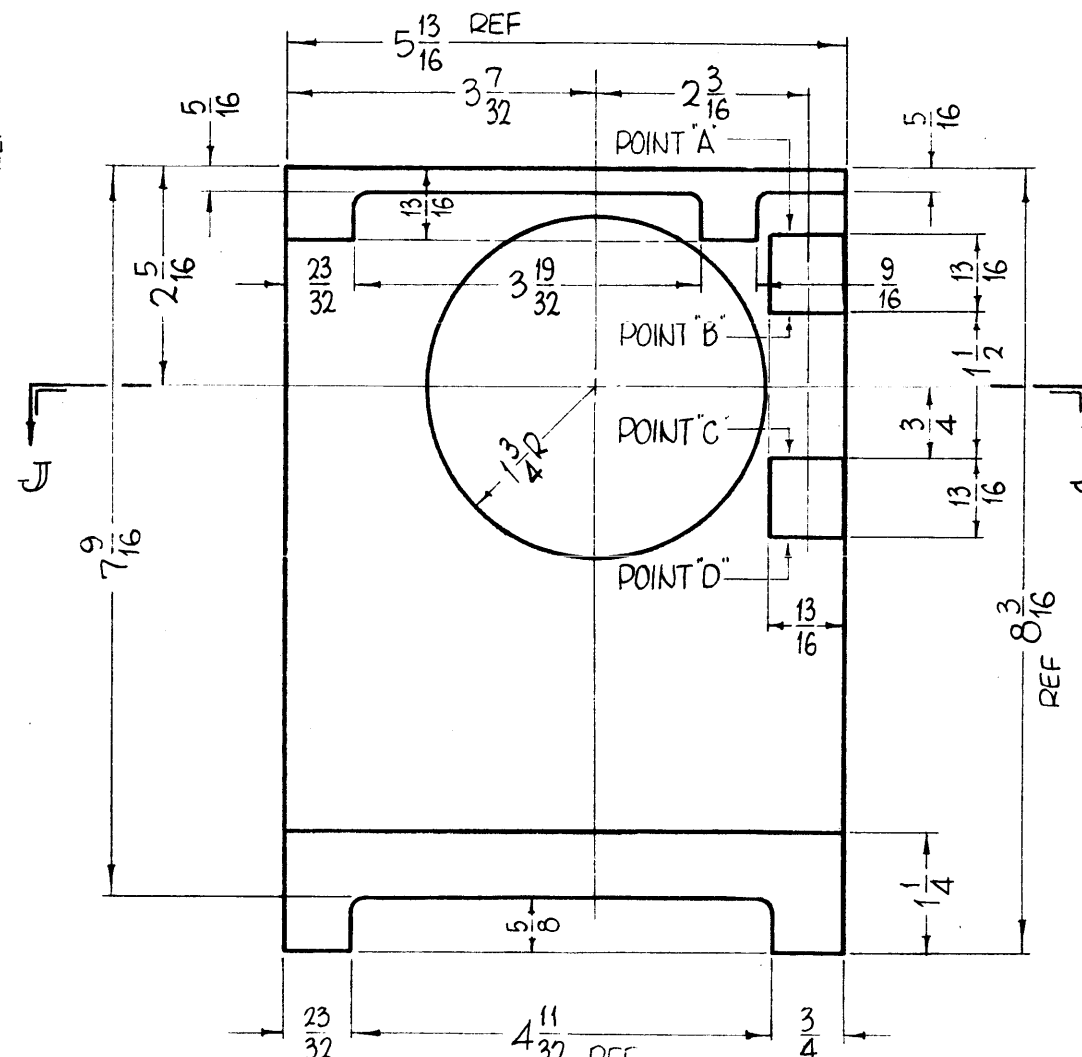
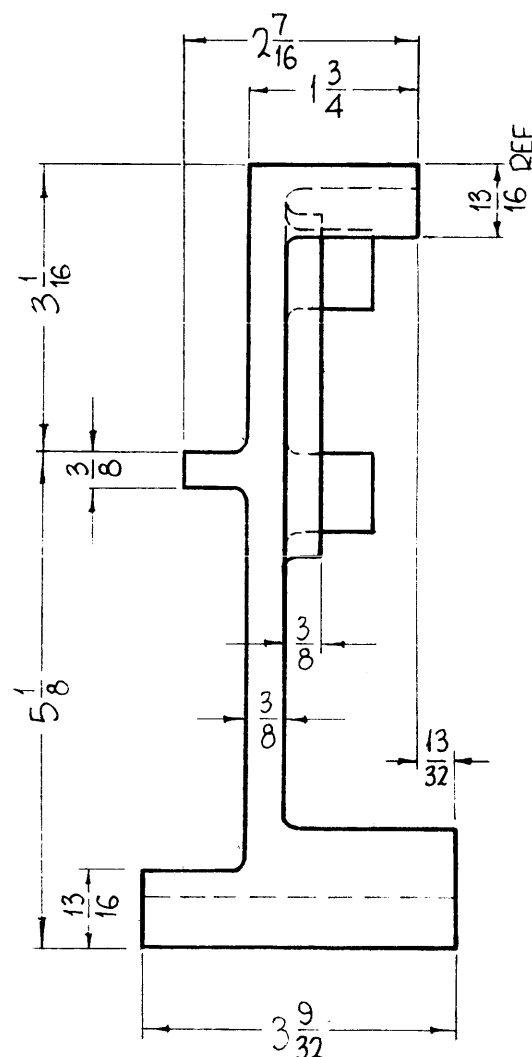
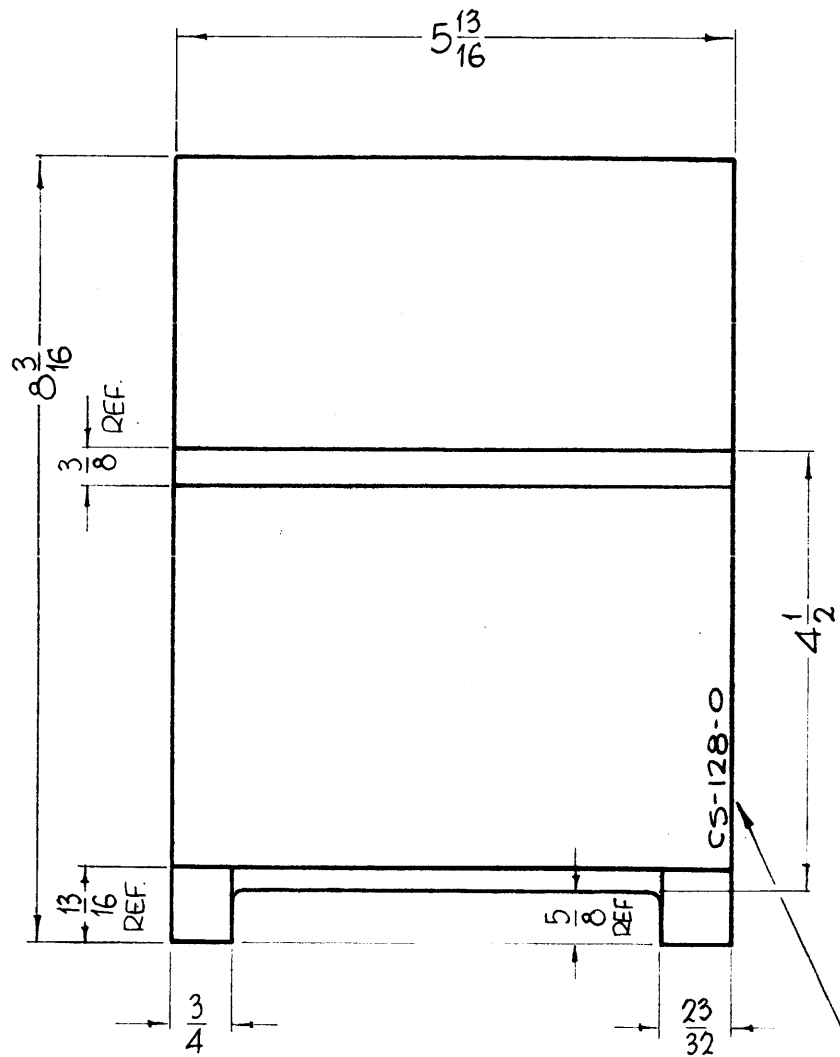
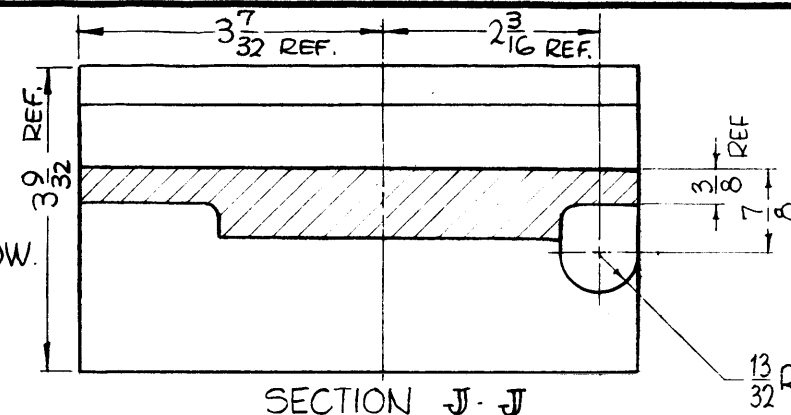
CS-128 0

THE CONTENTS OF THIS DRAWING ARE THE EXCLUSIVE PROPERTY OF THE TECHNICAL MATERIEL CORP. ITS UNAUTHORIZED USE OR REPRODUCTION IN WHOLE OR IN PART IS STRICTLY FORBIDDEN.

UNLESS OTHERWISE SPECIFIED

ALL FILLETS AND ROUNDS TO BE 1/8 R

THIS DETAIL IS FOR POINTS "A", "B", "C" AND "D" SHOWN BELOW.



METAL STAMP TMC PART NO. 1/8 HIGH GOTHIC.

REF MACHING, TMC NO'S PM-918, PM-920, PM-921

REQ. ITEM	PART NO.	F. BUDETTI	DESCRIPTION	SYMBOL
AS NOTED		THE TECHNICAL MATERIEL CORP. MAMARONECK, NEW YORK		
STOCK SIZE		CASTING		
ALUMINUM		CAPACITOR GEAR BOX		
MATERIAL		356-T-6		
TYPE & TEMPER		HEAT TREAT. SPEC.		
FINISH & SPEC. NO.		ELEC. DES. APP. MECH. DES. APP.		

0 ORIGINAL RELEASE FOR PRODUCTION	3-2-64	DATE	CH. NO.	DRAFTS	CHECKER	ENG. APP.
UNLESS OTHERWISE SPECIFIED:		SCALE: 1/2" = 1"				
DIMENSIONS ARE IN INCHES		MAXIMUM ALLOWABLE TOLERANCES HAVE BEEN DETERMINED AND ANY DEVIATIONS WILL BE CAUSE FOR REJECTION.				
TOLERANCES ON FRACTIONS ± 1/64		DECIMALS ± .005		ANGLES ± 1/2°		
REMOVE ALL BURRS AND SHARP EDGES		REMOVED				

REQ. PER UNIT	MODEL	SECTION	ASSY. NO.	DATE
1	GPT-200K	AX-395	A-3236	6-4-63
1	GPT-200K	AX-395	A-3234	6-4-63
1	GPT-200K	AX-395	A-3242	6-4-63

John C. Biele  
 DRAWN: [Signature]  
 CHECKED: [Signature]  
 FINAL APPROVAL: [Signature]  
 CS-128 0