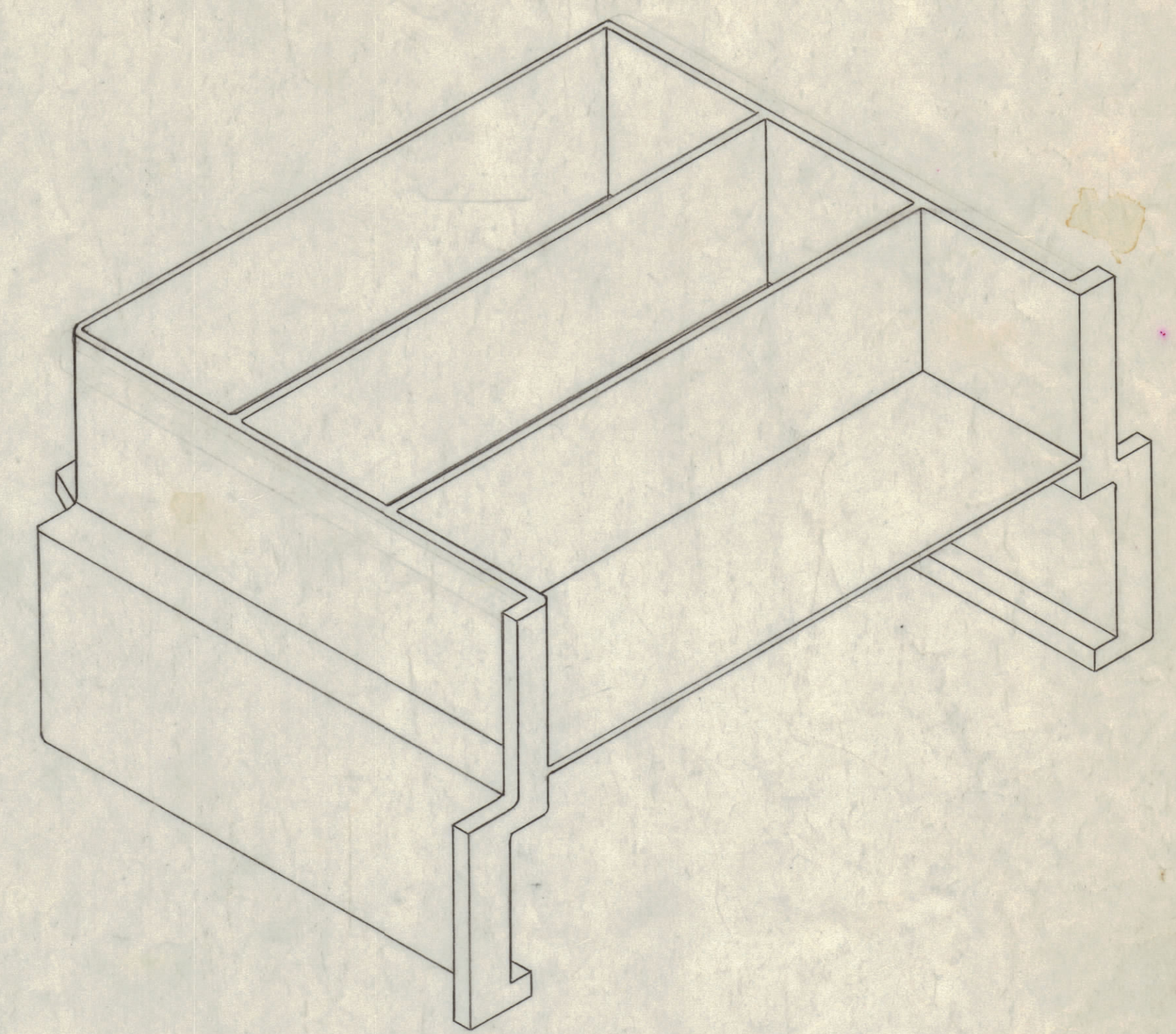


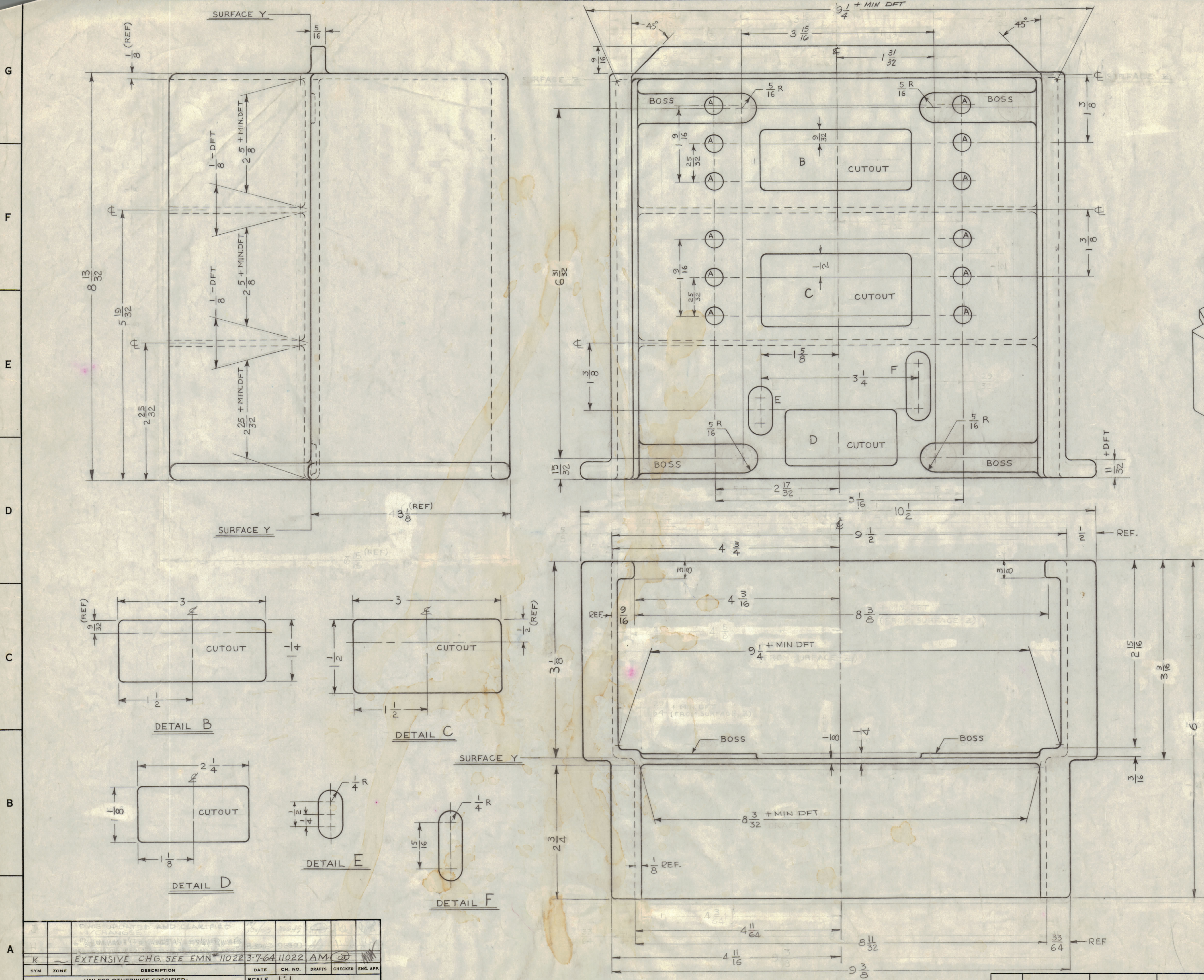
- NOTES:
1. CASTING MUST BE FREE OF POROSITY, AIR HOLES & ALL SURFACE IMPERFECTIONS.
 2. SANDBLAST SMOOTH, ALL SURFACES INSIDE & OUTSIDE.
 3. ALL WALL THICKNESSES 1/8 THICK UNLESS OTHERWISE NOTED.
 4. ALL FILLETS & RADII TO BE 1/8 OR LESS.
 5. DRAFT 1° MAX.
 6. REMOVE ALL BURRS & SHARP EDGES SEE DETAIL.
 7. MIN. DRAFT DIMENSIONS TO BE HELD AT POINTS SO INDICATED.



LEGEND		
HOLE	DESCRIPTION	REQ'D
A	3/8 DIA	12
B	SEE DETAIL	1
C	SEE DETAIL	1
D	SEE DETAIL	1
E	SEE DETAIL	1
F	SEE DETAIL	1

REF: PM-696

REQ. ITEM	PART NO.	STRUMER	DESCRIPTION	SYMBOL
			THE TECHNICAL MATERIEL CORP.	
			MAMARONECK, NEW YORK	
			CASTING	
			R.F. SECTION	
			MATERIAL	
			319-T51 OR 108-T51	
			STRESS RELIEVED	
			TYPE & TEMPER	
			SANDBLAST	
			HEAT TREAT. SPEC.	
			FINISH & SPEC. NO.	
			ELEC. DES. APP.	
			MECH. DES. APP.	
			SHEET	
			OF	



SYM	ZONE	DESCRIPTION	DATE	CH. NO.	DRAFTS	CHECKER	ENS. APP.
K		EXTENSIVE CHG. SEE EMN 11022	3-7-64	11022	AM		

UNLESS OTHERWISE SPECIFIED:
 DIMENSIONS ARE IN INCHES
 TOLERANCES ON FRACTIONS ± 1/32 DECIMALS ± .005 ANGLES ± 1/2°

SCALE 1:1
 MAXIMUM ALLOWABLE TOLERANCES HAVE BEEN DETERMINED AND ANY DEVIATIONS WILL BE CAUSE FOR REJECTION. REMOVE ALL BURRS & SHARP EDGES

REQ. PER UNIT	MODEL	SECTION	ASSY. NO.	DATE
1	GPR-92			4/19/63

CS-122 K