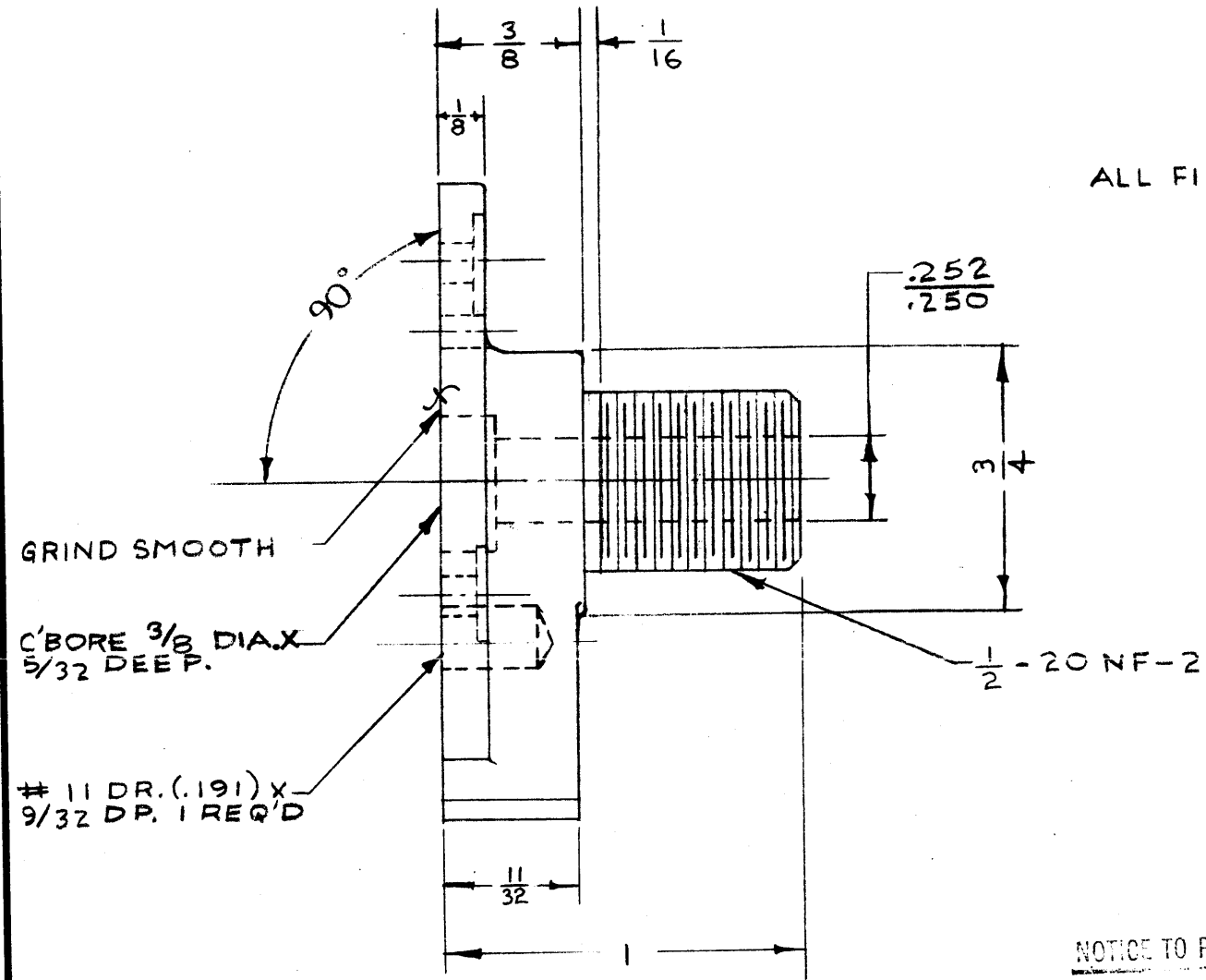


IF IT IS FOUND DESIRABLE TO CHANGE ANY TOLERANCE OR OTHER DETAIL SPECIFIED ON THIS DRAWING NOTIFY THE PURCHASER PROMPTLY.

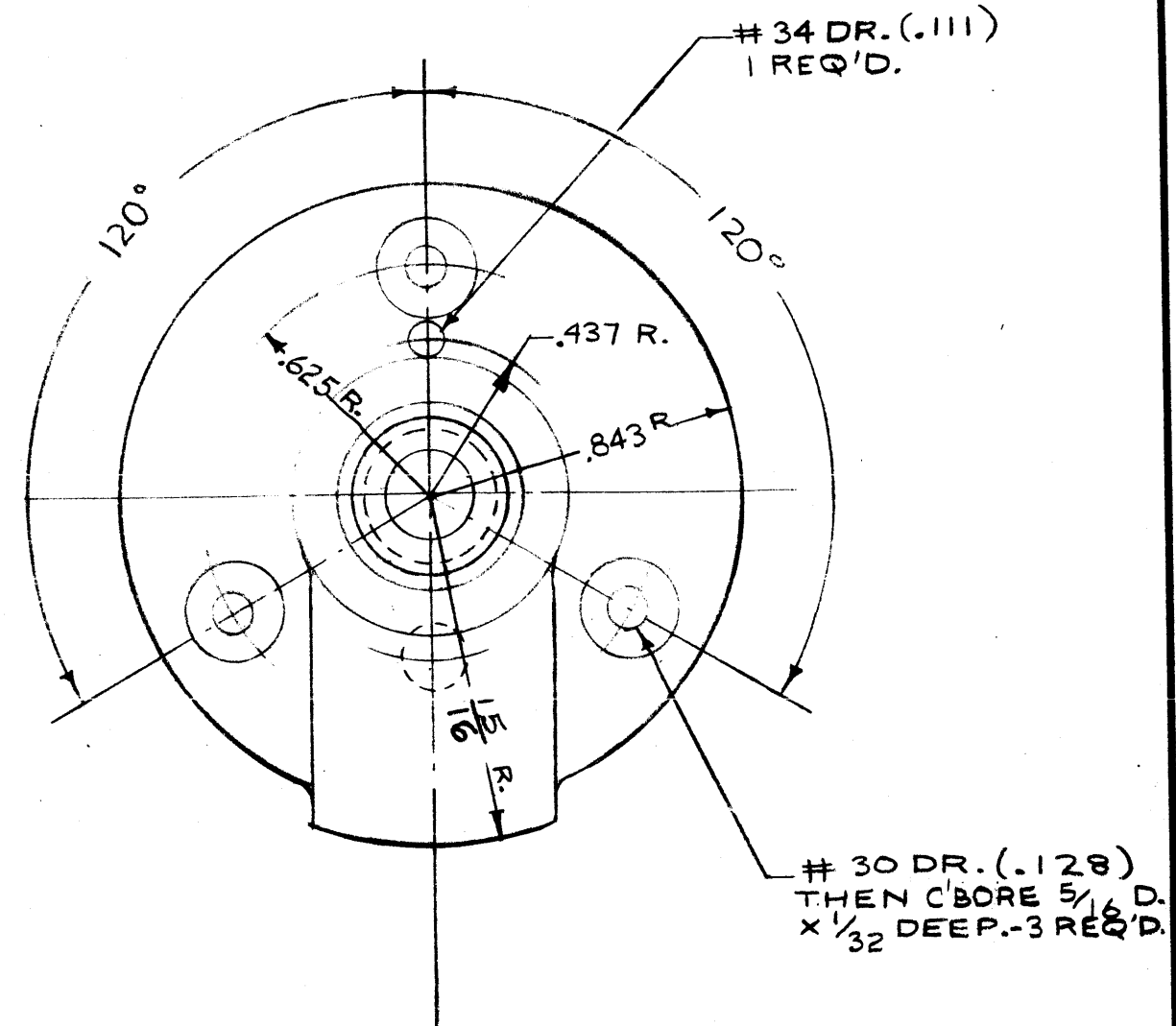
RELEASED

MAXIMUM ALLOWABLE TOLERANCES HAVE BEEN DETERMINED AND DEVIATIONS WILL BE CAUSE FOR REJECTION. REMOVE ALL BURRS AND SHARP EDGES

CS-111



ALL FILLETS APPROX. $\frac{1}{8}$ R.



NOTICE TO PERSONS RECEIVING THIS DRAWING

THE TECHNICAL MATERIEL CORPORATION claims proprietary right in the material disclosed herein. This drawing is issued in confidence for engineering information only and may not be reproduced or used to manufacture anything shown herein without permission from THE TECHNICAL MATERIEL CORPORATION to the user. This drawing is loaned for mutual assistance and is subject to recall at any time.

Property of:
THE TECHNICAL MATERIEL CORPORATION
MAMARONECK, NEW YORK

REQ. ITEM	PART NO.	DESCRIPTION	SYMBOL
CASTING		THE TECHNICAL MATERIEL CORP. MAMARONECK, NEW YORK	
STOCK SIZE			
BRASS	<i>ff</i>	CLUTCH SUPPORT	
MATERIAL	WEIGHT PER PC.		
FREE MACHINING			
TYPE & TEMPER		16 12-4-52	<i>PJA</i>
STRESS RELIEVED		DRAWN	ELEC. DES. APP. MECH. DES.
HEAT TREAT. SPEC.		12-15-52	
		CHECKED	FINAL APPROVAL
FINISH & SPEC. NO.		CS-111	

ISSUE	ITEM	CHANGED FROM	DATE	CN. NO.	DRAFTS	CHECKER	ENG. APP.
TOLERANCES			SCALE: TWICE				
ALL OTHERS			DRILL, PUNCH, COMMERCIAL STOCK SIZES AND MANUFACTURERS TOLERANCES ARE NOT INCLUDED.				
DEC. DIM. $\pm .005$							
FRAC. DIM. $\pm \frac{1}{64}$							
ANGULAR DIM. $\pm 1^\circ$							

MODEL	PROJECT NO.	ASSY. NO.	DATE
R-12	168	A-287	12-4-52
R-10	168	A-287	12-4-52
R-8	168	A-287	12-4-52
USED ON			