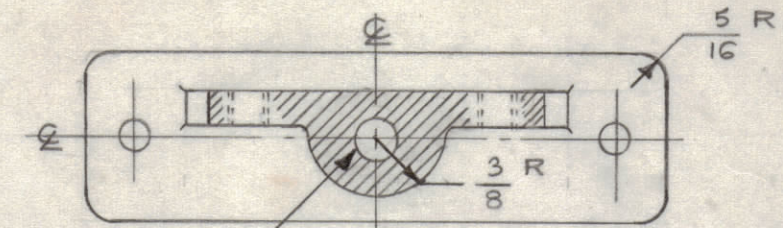


IF IT IS FOUND DESIRABLE TO CHANGE ANY TOLERANCE OR OTHER DETAIL SPECIFIED ON THIS DRAWING NOTIFY THE PURCHASER PROMPTLY.

MAXIMUM ALLOWABLE TOLERANCES HAVE BEEN DETERMINED AND DEVIATIONS WILL BE CAUSE FOR REJECTION. REMOVE ALL BURRS AND SHARP EDGES

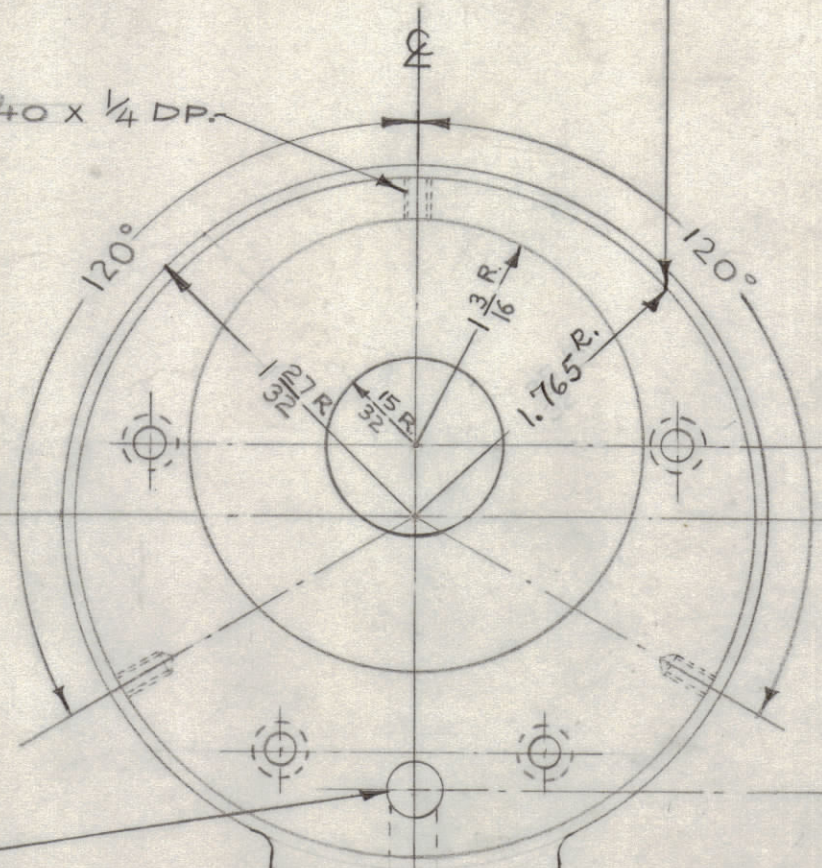
RELEASED

SECTION A-A



1/4" DIA (.250) 1 REQ'D. DRILL OR CORE.

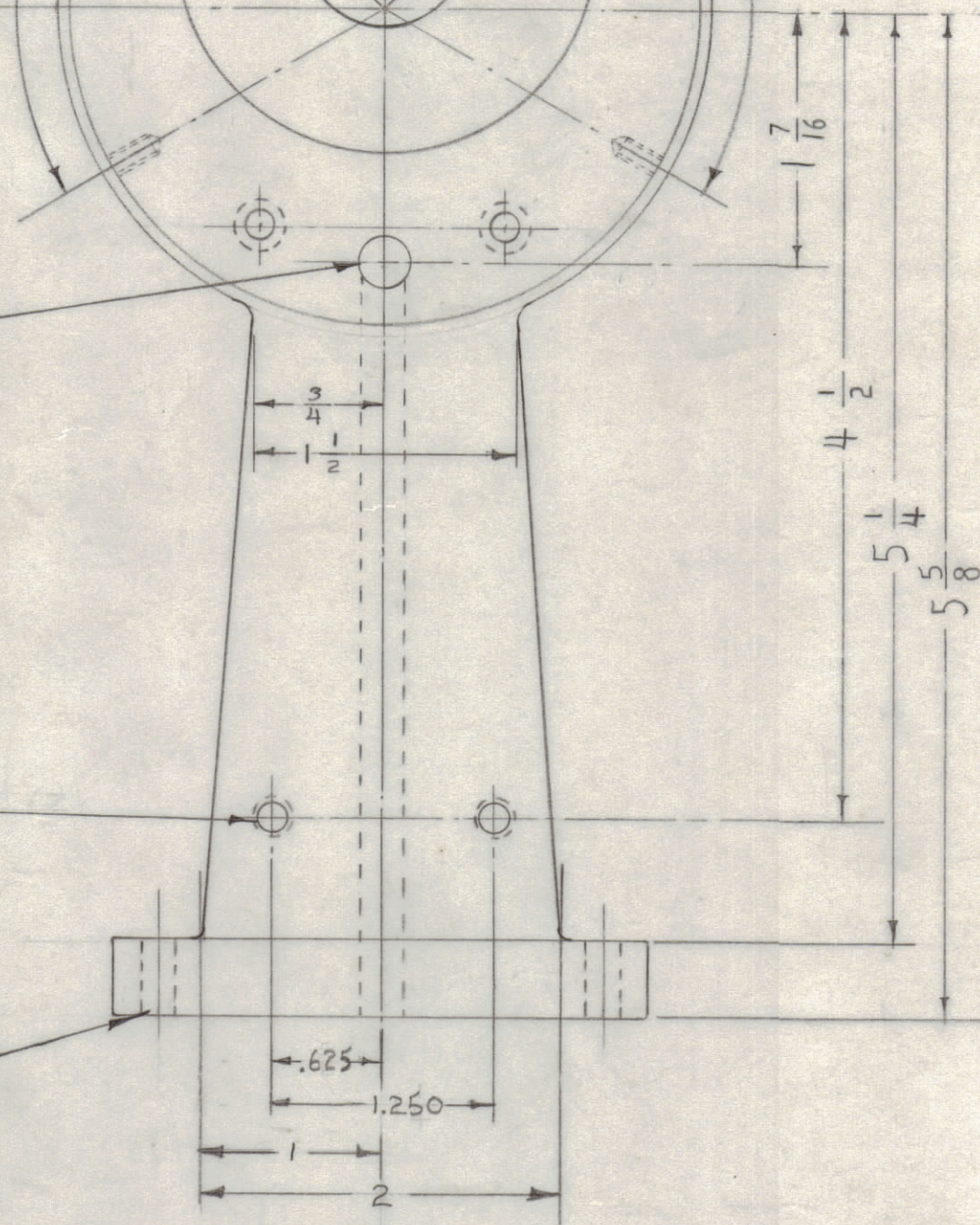
MACHINE 1.765 RADIUS  
 DRILL & TAP 4-40 X 1/4 DP. 3 REQ'D.



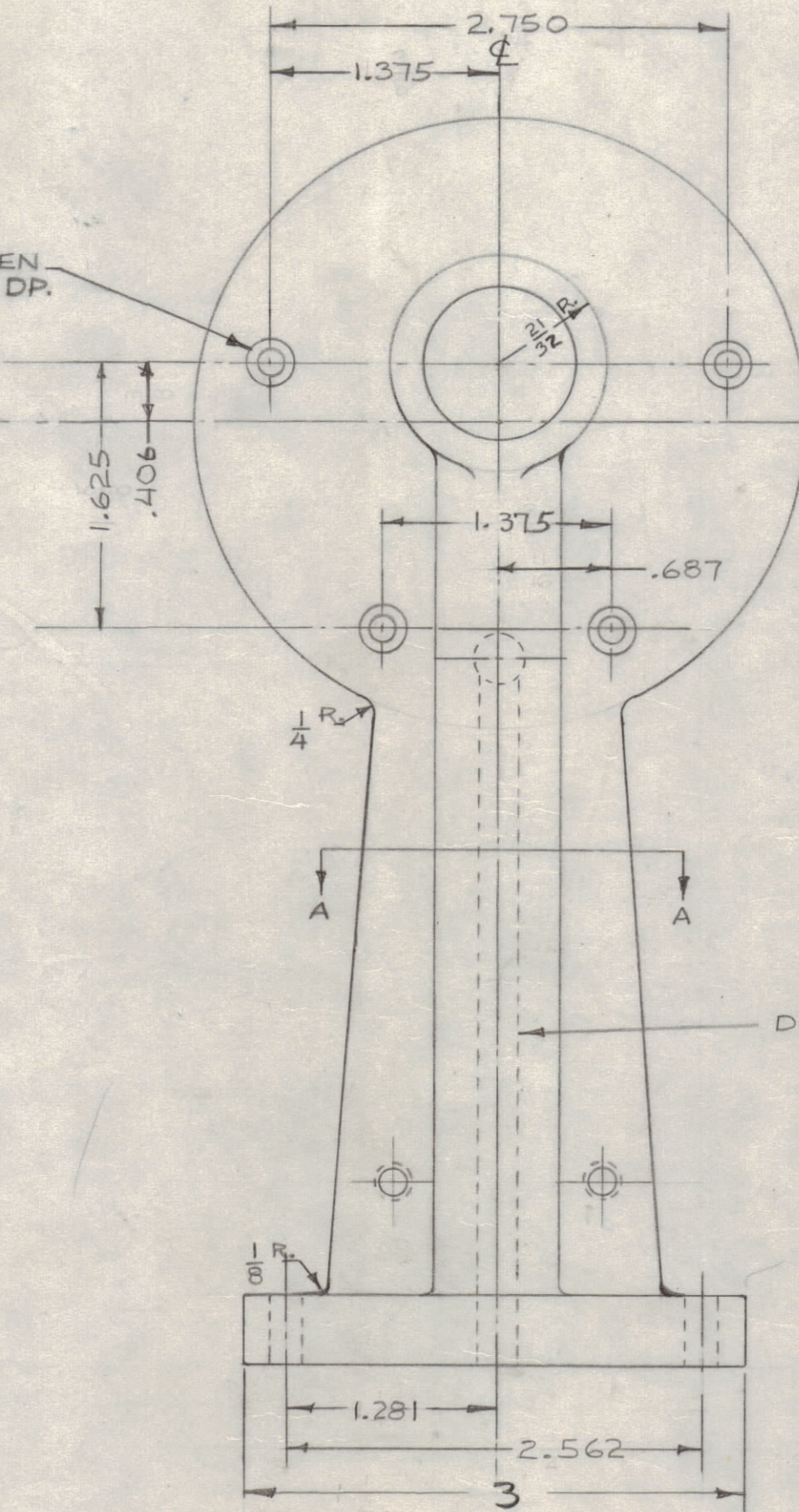
5/16" DR. (.312) 5/8 DEEP 1 REQ'D. - BLIND HOLE.

DRILL & TAP 10-32 2 REQ'D.

#11 DR. (.191) 2 REQ'D.



#10 DR. (.193) THEN C'BORE 1/32 DIA. X 3/16 DP. 4 HOLES REQ'D.



DRILL OR CORE

CS-110 A

ADD DRAFT TO DIMENSIONS

NOTICE TO PERSONS RECEIVING THIS DRAWING

THE TECHNICAL MATERIEL CORPORATION claims proprietary right in the material disclosed hereon. This drawing is issued in confidence for engineering information only and may not be reproduced or used to manufacture anything shown hereon without permission from THE TECHNICAL MATERIEL CORPORATION to the user. This drawing is loaned for mutual assistance and is subject to recall at any time.

Property of:

THE TECHNICAL MATERIEL CORPORATION  
 MAMARONECK, NEW YORK

NOTE:

1. SAND BLAST.
2. S-404 (YEL-IRIDITE)
3. S-114 (ZINC CHROMATE PRIMER)
4. S-117 (BLACK WRINKLE PAINT)

|            |                   |   |         |         |        |         |
|------------|-------------------|---|---------|---------|--------|---------|
| A          | 1                 | S404 - IRIDITE WAS S101 CAUSTIC D. D  | 12-9-52 | 1001    | P      | EMN     |
| ISSUE      | ITEM              | CHANGED FROM  | DATE    | CN. NO. | DRAFTS | CHECKER |
| TOLERANCES |                   | SCALE: FULL SIZE  |         |         |        |         |
| ALL OTHERS | DEC. DIM. ± .005  | DRILL, PUNCH, COMMERCIAL STOCK SIZES AND MANUFACTURERS TOLERANCES ARE NOT INCLUDED. |         |         |        |         |
|            | FRAC. DIM. ± 1/64 |   |         |         |        |         |
|            | ANGULAR DIM. ± 10 |   |         |         |        |         |

|         |             |            |          |
|---------|-------------|------------|----------|
| CK-2    | 168         | A-264      | 11-19-52 |
| MODEL   | PROJECT NO. | ASS'Y. NO. | DATE     |
| USED ON |             |            |          |

| REQ. ITEM               | PART NO. | DESCRIPTION  | SYMBOL                          |
|-------------------------|----------|--|---------------------------------|
|                         | ff       | THE TECHNICAL MATERIEL CORP.<br>MAMARONECK, NEW YORK |                                 |
| ALUMINUM                |          | PEDESTAL   |                                 |
| MATERIAL WEIGHT PER PC. |          |  |                                 |
| 356-T6                  |          |  |                                 |
| TYPE & TEMPER           |          | 15 11-19-52  |                                 |
| STRESS RELIEVED         |          | DRAWN  | ELEC. DES. APP. MECH. DES. APP. |
| HEAT TREAT. SPEC.       |          | JAD 11/24/52   |                                 |
| SEE NOTE                |          | CHECKED  | FINAL APPROVAL                  |
| FINISH & SPEC. NO.      |          |  |                                 |
|                         |          | CS-110   | A                               |