

IF IT IS FOUND DESIRABLE TO CHANGE ANY TOLERANCE OR OTHER DETAIL SPECIFIED ON THIS DRAWING NOTIFY THE PURCHASER PROMPTLY.

MAXIMUM ALLOWABLE TOLERANCES HAVE BEEN DETERMINED AND DEVIATIONS WILL BE CAUSE FOR REJECTION. REMOVE ALL BURRS AND SHARP EDGES

RELEASED

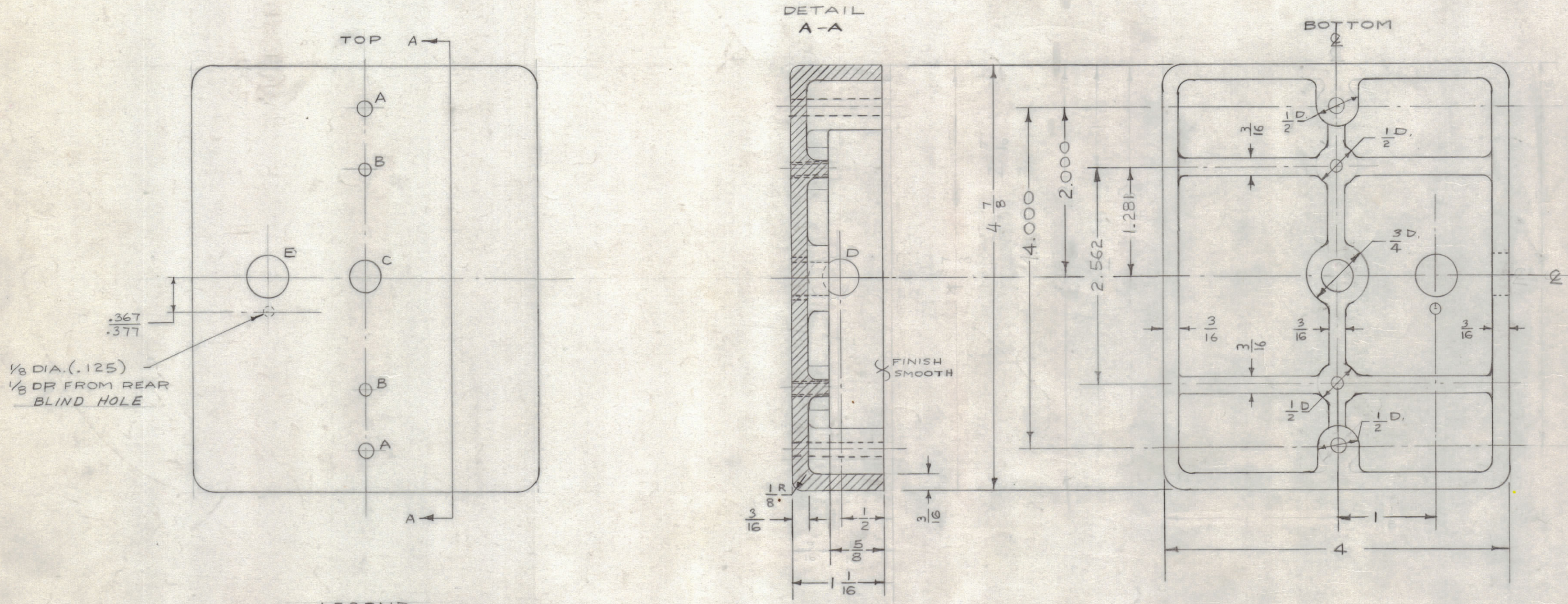
RELEASED

NOTICE TO PERSONS RECEIVING THIS DRAWING

THE TECHNICAL MATERIEL CORPORATION claims proprietary right in the material disclosed herein. This drawing is issued in confidence for engineering information only and may not be reproduced or used to manufacture anything shown herein without permission from THE TECHNICAL MATERIEL CORPORATION to the user. This drawing is loaned for mutual assistance and is subject to recall at any time.

Property of:
THE TECHNICAL MATERIEL CORPORATION
MAMARONECK, NEW YORK

ALL FILLETS APPROX. $\frac{1}{8}$ R.



CS-109 A

- LEGEND
 A = #9 DR. (.196) 2 REQ'D.
 B = DRILL & TAP 10-32 2 REQ'D.
 C = $\frac{3}{8}$ DIA. (.375) 1 REQ'D.
 D = $\frac{1}{16}$ DIA. (.062) 1 REQ'D.
 E = $\frac{1}{2}$ DIA. (.500) 1 REQ'D.

ADD DRAFT TO DIMENSIONS

- NOTE:
 1. SAND BLAST ALL OUTSIDE SURFACES.
 2. S-404 (YEL. IRIDITE) ALL OVER.
 3. S-114 (ZINC CHROMATE PRIMER) ALL OUTSIDE SURFACES
 4. S-117 (BLACK WRINKLE ENAMEL) ALL OUTSIDE SURFACES

ISSUE	ITEM	CHANGED FROM	DATE	CN. NO.	DRAFTS	CHECKER	ENG. APP.
A	1	S404-IRIDITE WAS S101 CAUSTIC DIP	12-9-52	1001	P		EMN
TOLERANCES		SCALE: FULL SIZE					
ALL OTHERS	DEC. DIM. $\pm .005$ FRAC. DIM. $\pm \frac{1}{64}$ ANGULAR DIM. \pm		DRILL, PUNCH, COMMERCIAL STOCK SIZES AND MANUFACTURERS TOLERANCES ARE NOT INCLUDED.				

CK-2	168	A-264	11-18-52
MODEL	PROJECT NO.	ASS'Y. NO.	DATE
USED ON			

REQ. ITEM	PART NO.	DESCRIPTION	SYMBOL
—ff—		THE TECHNICAL MATERIEL CORP. MAMARONECK, NEW YORK	
STOCK SIZE		BASE CASTING	
ALUMINUM #		356-T6	
MATERIAL		WEIGHT PER PC.	
TYPE & TEMPER		16 11-18-52	
STRESS RELIEVED		DRAWN	
HEAT TREAT. SPEC.		ELEC. DES. APP.	
SEE NOTE		MECH. DES. APP.	
FINISH & SPEC. NO.		CHECKED	
CS-109		FINAL APPROVAL	
A		CS-109	