

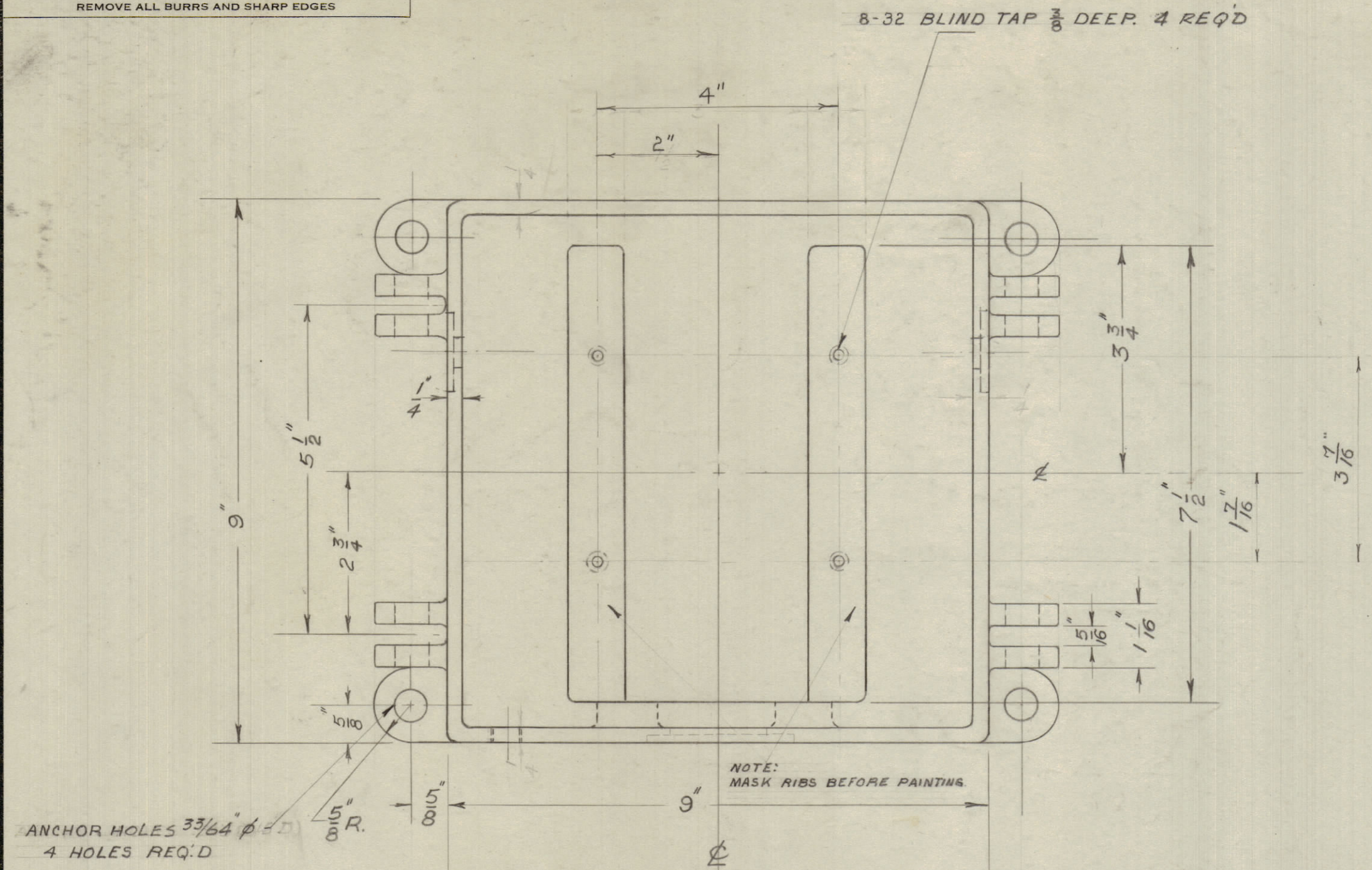
IF IT IS FOUND DESIRABLE TO CHANGE ANY TOLERANCE OR OTHER DETAIL SPECIFIED ON THIS DRAWING NOTIFY THE PURCHASER PROMPTLY.

MAXIMUM ALLOWABLE TOLERANCES HAVE BEEN DETERMINED AND DEVIATIONS WILL BE CAUSE FOR REJECTION. REMOVE ALL BURRS AND SHARP EDGES

NOTICE TO PERSONS RECEIVING THIS DRAWING

THE TECHNICAL MATERIEL CORPORATION claims proprietary right in the material disclosed hereon. This drawing is issued in confidence for engineering information only and may not be reproduced or used to manufacture anything shown hereon without permission from THE TECHNICAL MATERIEL CORPORATION to the user. This drawing is loaned for mutual assistance and is subject to recall at any time.

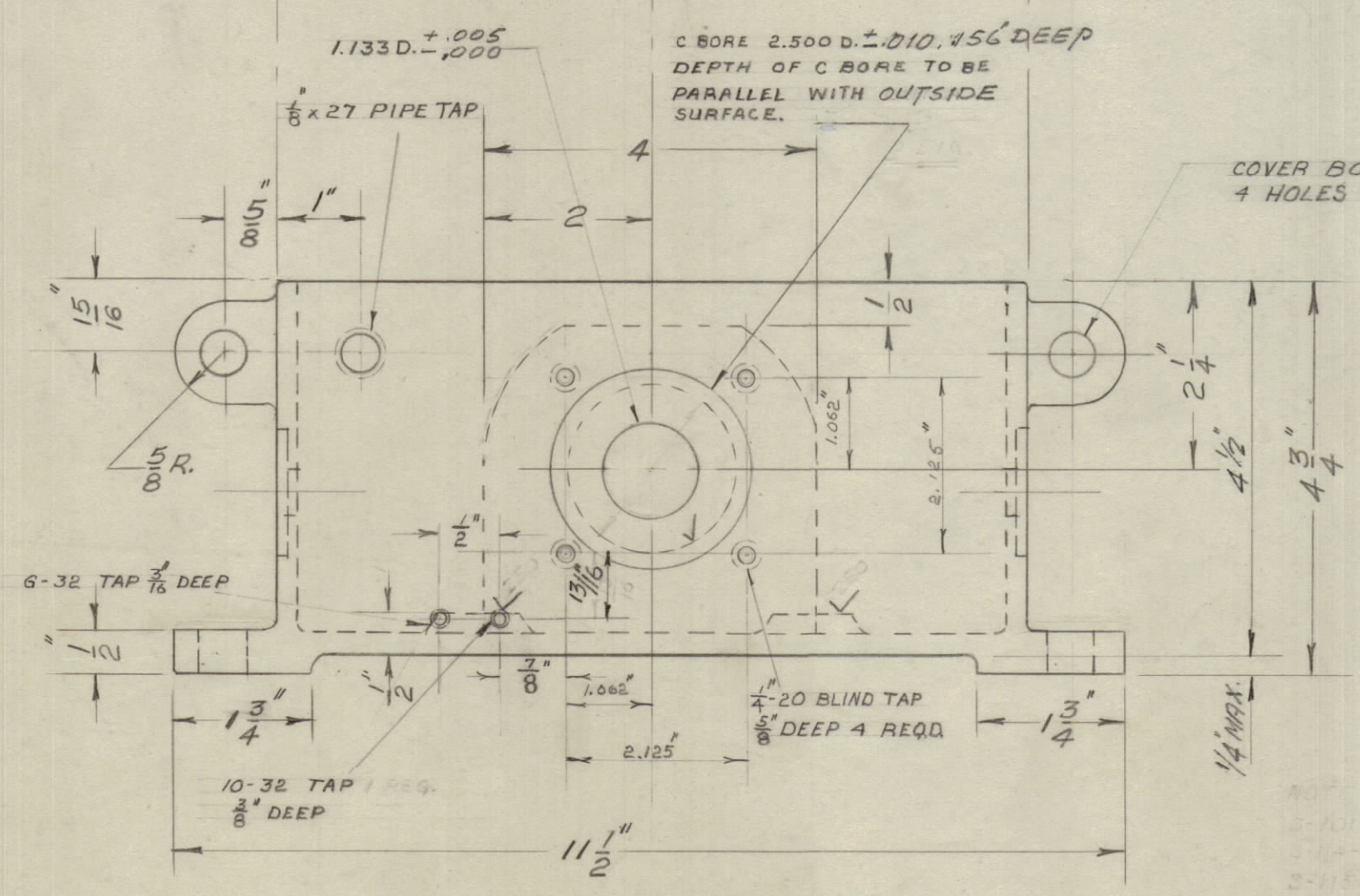
Property of:
THE TECHNICAL MATERIEL CORPORATION
MAMARONECK, NEW YORK



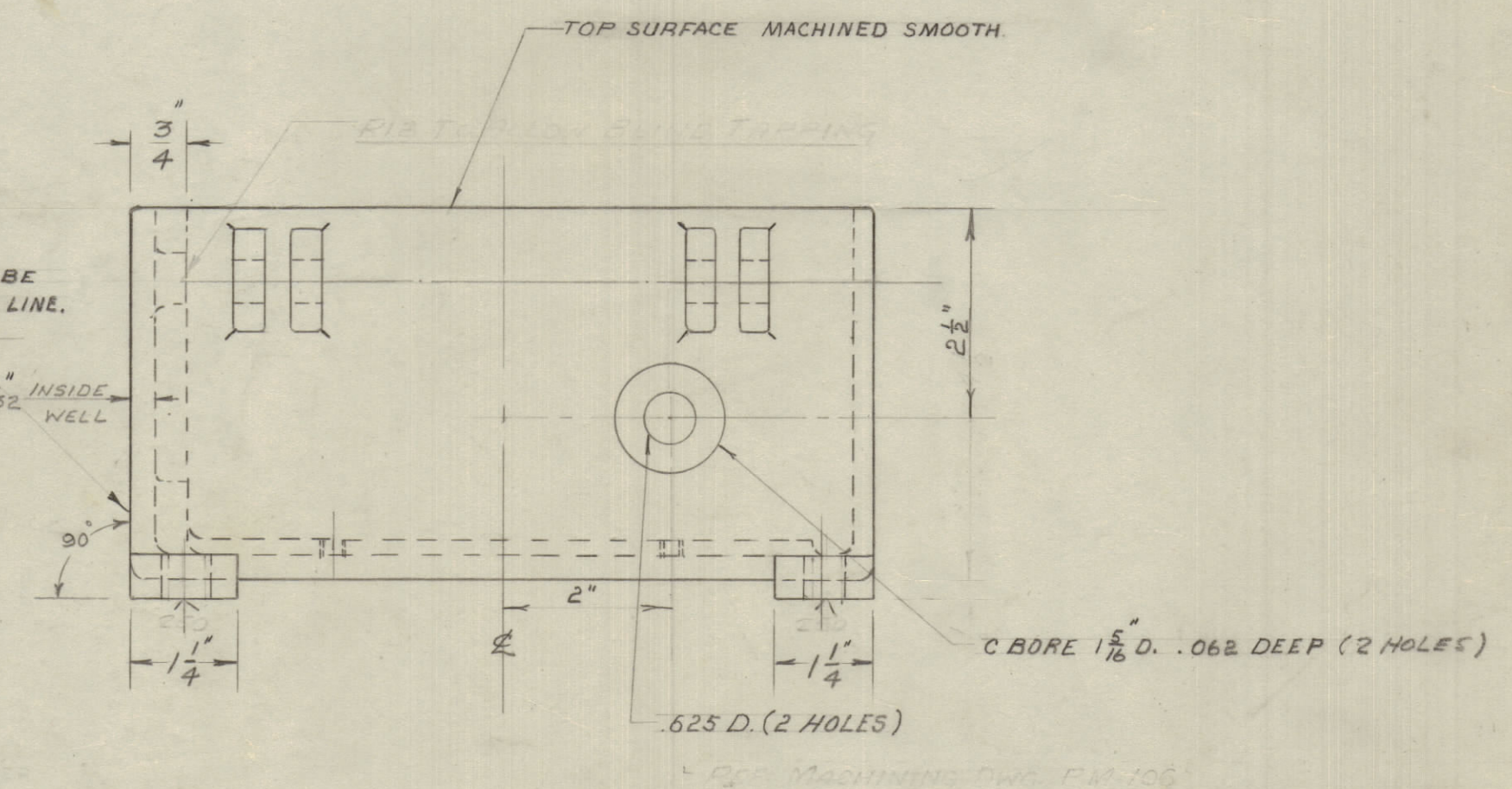
NOTE:
 -CASTING MUST BE FREE OF POROSITY AND SAND HOLES, ALL SURFACES MUST BE SMOOTH - SAND BLAST.
 S-101 - CAUSTIC DIP
 S-114 - ZINC CHROMATE PRIMER
 S-115 - SMOOTH GREY ENAMEL.

ANCHOR HOLES $3\frac{3}{64}$ DIA
4 HOLES REQ'D
 NOTE: MASK RIBS BEFORE PAINTING.

CS-10001 B



COVER BOLT HOLES .515D.
4 HOLES REQ'D.
 NOTE: THIS SURFACE TO BE SQUARE WITH BASE LINE.



REQ. ITEM	PART NO.	DESCRIPTION	SYMBOL
		TMC (Canada) LIMITED OTTAWA ONTARIO	
STOCK SIZE		CASE CASTING & MACHINING	
ALUMINUM			
MATERIAL	WEIGHT PER PC.		
356-T6			
TYPE & TEMPER		L. MARION	
STRESS RELIEVED		DRAWN	ELEC. DES. APP. MECH. DES. APP.
HEAT TREAT. SPEC.		<i>Manurho</i> FINAL APPROVAL	
SEE NOTE		CHECKED	
FINISH & SPEC. NO.		REF DWG. CS-10004	CS-10001

A	MACHINING ADDED	30-1-57			m.g.		
ISSUE	ITEM	CHANGED FROM	DATE	CN. NO.	DRAFTS	CHECKER	ENG. APP.
TOLERANCES		SCALE: 1/2" = 1'-0"					
ALL OTHERS	DEC. DIM. ± FRAC. DIM. ± ANGULAR DIM. ±		DRILL, PUNCH, COMMERCIAL STOCK SIZES AND MANUFACTURERS TOLERANCES ARE NOT INCLUDED.				

RAC		23/4/57	
MODEL	PROJECT NO.	ASS'Y. NO.	DATE
USED ON			