

IF IT IS FOUND DESIRABLE TO CHANGE ANY TOLERANCE OR OTHER DETAIL SPECIFIED ON THIS DRAWING NOTIFY THE PURCHASER PROMPTLY.

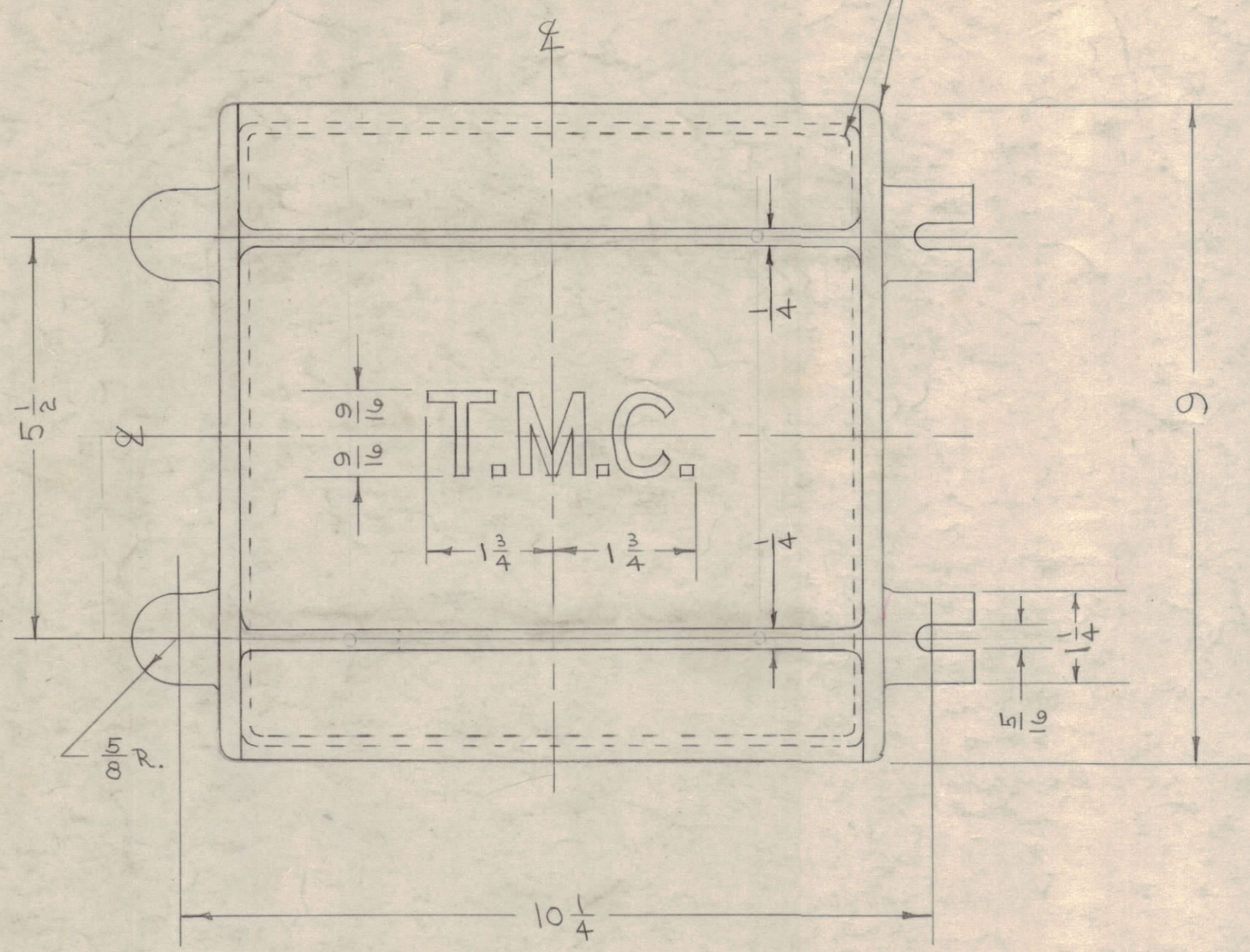
MAXIMUM ALLOWABLE TOLERANCES HAVE BEEN DETERMINED AND DEVIATIONS WILL BE CAUSE FOR REJECTION. REMOVE ALL BURRS AND SHARP EDGES

NOTE - CORNER RADIUS TO CONFORM WITH CORNERS ON DWG. CS-101 (CASE CASTING)

NOTICE TO PERSONS RECEIVING THIS DRAWING

THE TECHNICAL MATERIEL CORPORATION claims proprietary right in the material disclosed hereon. This drawing is issued in confidence for engineering information only and may not be reproduced or used to manufacture anything shown hereon without permission from THE TECHNICAL MATERIEL CORPORATION to the user. This drawing is loaned for mutual assistance and is subject to recall at any time.

Property of:
THE TECHNICAL MATERIEL CORPORATION
MAMARONECK, NEW YORK

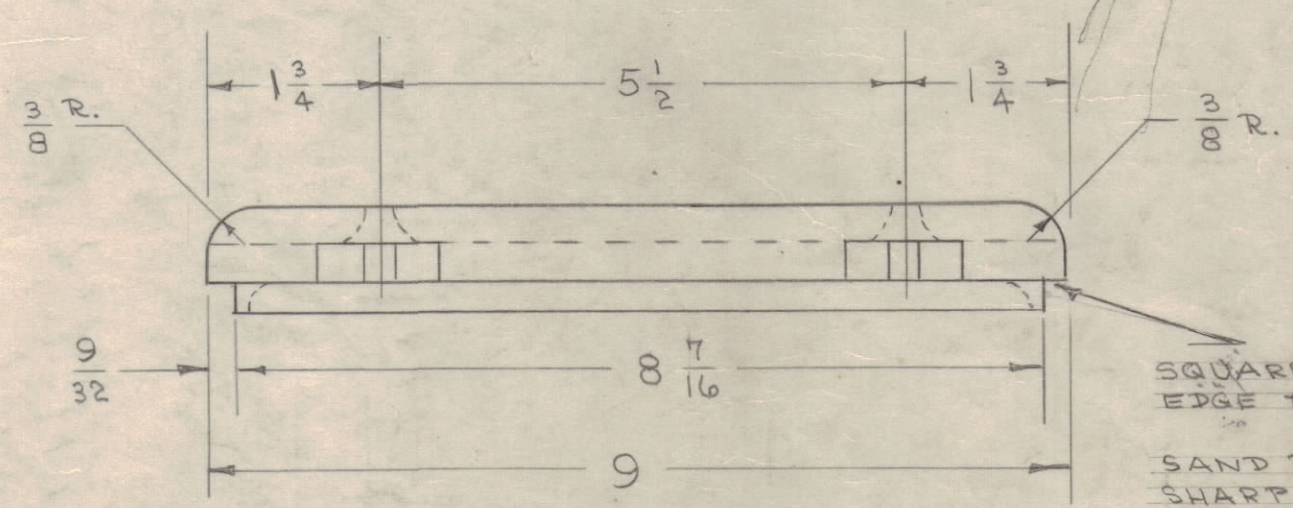
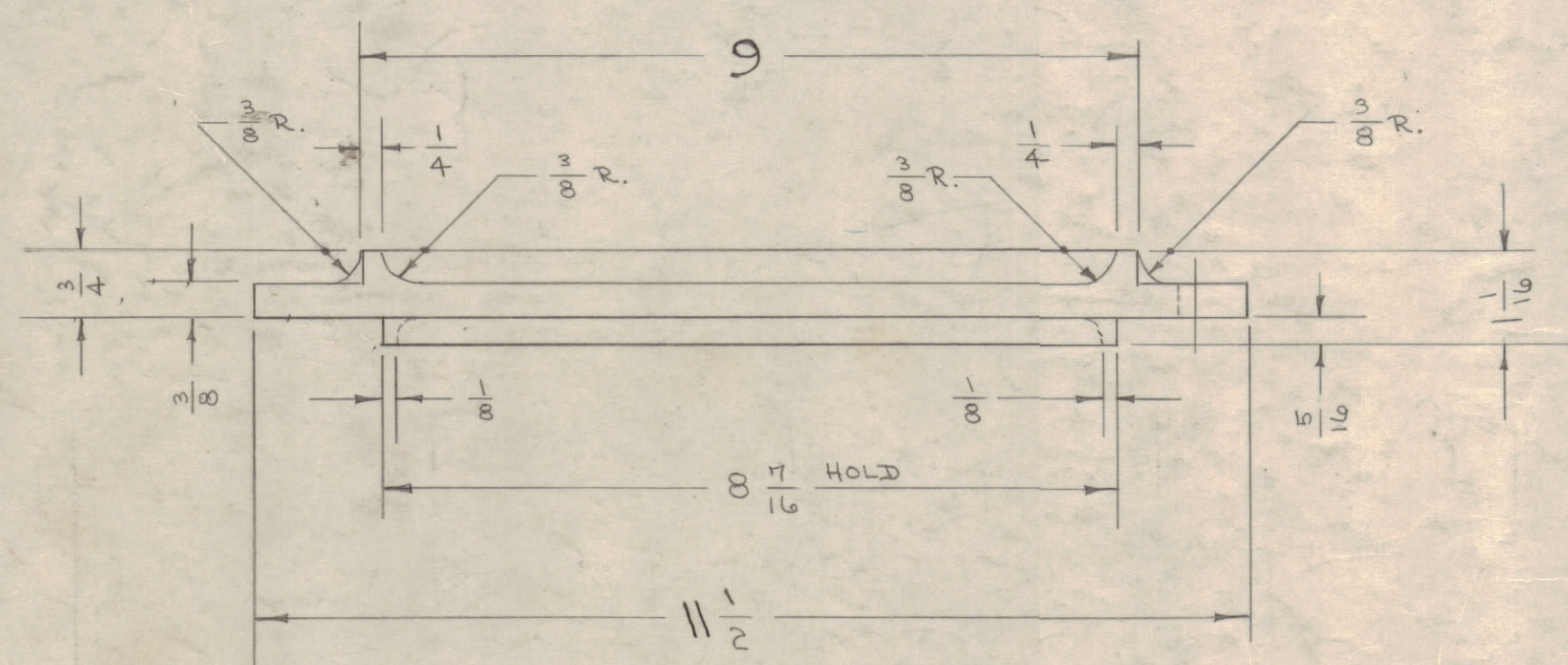


REFERENCE - MACHINING DWG. PM-105.

NOTE:
CASTING TO BE FREE OF POROSITY, AIR HOLES,
AND ALL SURFACES SMOOTH.
USE MIN. DRAFT (.062 MAX. DRAFT).

CS-100 C

RELEASED



SQUARE CORNERS ALL AROUND
EDGE TO RECEIVE GASKET
SAND BLAST TO REMOVE ALL
SHARP EDGES
APPROX. 3/8 RADIUS ON ALL
FILLETS.

ISSUE	ITEM	CHANGED FROM	DATE	CN. NO.	DRAFTS	CHECKER	ENG. APP.
C	1	NOTE CLARIFIED	5/10/56	3	JAS	JAS	JAS
B	1	RAC-7A WAS RAC-7	3/14/56	2	JAS	JAS	JAS
A	—	REDRAWN - NO CHANGE	4/7/53	—	C.D.D.	JAS	JAS

TOLERANCES: DEC. DIM. ± 1/64, FRAC. DIM. ± 1/64, ANGULAR DIM. ±

SCALE: DRILL PUNCH, COMMERCIAL STOCK SIZES AND MANUFACTURERS TOLERANCES ARE NOT INCLUDED.

MODEL	PROJECT NO.	ASS'Y. NO.	DATE
RAC-7A		PM-105	10-31-56
VRA-1, 2, 2A			
RAC-7			3-14-56
TRC-500	437		2-20-56
BAC-1-S-1.5	230	A-525	9-15-53
BAC-3-S-500	153	A-234	9-6-52
BAC-4-S-20	108	A-109	7-9-52
BAC-3-S-20	108	A-108	7-9-52
BAC-1-S-20	108	A-106	7-9-52
BAC-4-S-500	153	A-233	10-27-52
BAC-1	157	A-189	10-17-52
RAC	112		6-9-52

REF: CS-120

REQ. ITEM	PART NO.	DESCRIPTION	SYMBOL
		THE TECHNICAL MATERIEL CORP. MAMARONECK, NEW YORK	
		COVER, CASTING	
		ALUMINUM	
		MATERIAL WEIGHT PER PC.	
		356-T6	
		TYPE & TEMPER	
		STRESS RELIEVED	
		HEAT TREAT. SPEC.	
		SAND BLAST	
		FINISH & SPEC. NO.	