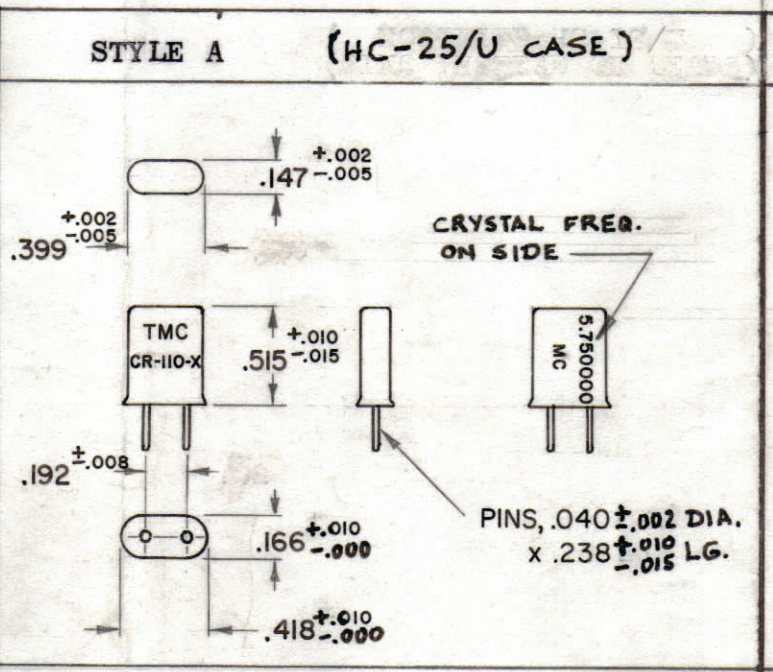


REVISIONS							
ZONE	SYM	DESCRIPTION	DATE	E.M.N. NO.	DRAFT	CHKD	APPD
A		TMC CHART, HOLD TYPE COL: HC-25/U WAS "SPECIAL"; FREQ. RANGE COL: "16.875" WAS "TO 33.750"; MAX. RESISTANCE COL. UNDER "TO MC": "16.875" WAS "33.750"; P/H DESC. UPDATED; STYLE "A"; NOTE # DIM. UPDATED; DR. NOTES: # 4 ADDED.	4/20/65	13828	J.P.	J.P.	J.P.

BASIC TMC PART NO. AND TYPE (ADD FREQ. IN MC PER EXAMPLE)	HOLDER TYPE	PICT. STYLE	FREQ. RANGE MC/SEC. INCL.	OPERATING SPECS			OPERABLE SPECS		MODE OF OSCILLATION	RESONANCE	PARALLEL RESONANCE LOAD CAP. uuf	MAX. PIN TO PIN SHUNT CAPACITANCE uuf	DRIVE LEVEL MW	MAXIMUM EFFECTIVE RESONANCE RESISTANCE (EQUIVALENT RESISTANCE)		
				OPERATING TEMP. RANGE °C.	FREQ. TOL. AT OPERATING TEMP. RANGE ±%	FREQ. STABILITY WITHIN FREQ. TOL. ±%	OPERABLE TEMP. RANGE °C.	FREQ. TOL. AT OPERABLE TEMP. RANGE ±%						RESIST. OHMS	FROM MC	TO MC
CR-110-1-	HC-25/U	A	3.750 to 16.875	75±5	.005	.0005	N/A	N/A	FUNDAMENTAL	PARALLEL	32±1	7.5	2.5	175 75 50	3.750 4.750 6.000	4.750 6.000 16.875
CR-110-2-	HC-25/U	A	3.750 to 16.875	75±5	.002	.0005	N/A	N/A	FUNDAMENTAL	PARALLEL	32±1	7.5	2.5	175 75 50	3.750 4.750 6.000	4.750 6.000 16.875
CR-110-3-	HC-25/U	A	3.750 to 16.875	25±5	.005	.0005	-55 to +105	.005	FUNDAMENTAL	PARALLEL	32±1	7.5	2.5	175 75 50	3.750 4.750 6.000	4.750 6.000 16.875
CR-110-4-	HC-25/U	A	3.750 to 16.875	25±5	.002	.0005	-55 to +105	.005	FUNDAMENTAL	PARALLEL	32±1	7.5	2.5	175 75 50	3.750 4.750 6.000	4.750 6.000 16.875

- NOTES**
- UNITS SHALL BE MANUFACTURED IN ACCORDANCE WITH AND SHALL MEET THE REQUIREMENTS OF MIL-C-3098C AND AMENDMENTS.
 - HOLDERS SHALL CONFORM (CONSTRUCTION, FINISHES, ETC) TO MIL-H-10056.
 - MARKING INFORMATION
 - ALL MARKING SHALL BE IN ACCORDANCE WITH MIL-C-3098, PAR. 3.25, EXCEPT FREQ. AND TMC PART NO. "CR-110-X."
 - ALL UNITS SHALL BE MARKED WITH INITIALS "TMC" AND TMC BASIC PART NO. AS SPECIFIED IN CHART AND SHOWN IN PICTORIALS (EXAMPLE: TMC CR-110-3) MARKING SHALL BE RUBBER STAMPED, SILK SCREENED, OR AN EQUIVALENT PROCESS IN BLACK GOTHIC AND SHALL HAVE A CLEAR COATING TO PREVENT REMOVAL OF STAMPING. COATING SHALL NOT INTERFERE WITH OPERATION OF CRYSTAL.
 - WHEN EQUIPMENT OPERATING FREQUENCY IS SPECIFIED, OPERATING FREQ. WILL BE STAMPED ON TOP IN MC, AND 7 DIGIT REQUIREMENT MAY BE WAIVERED.



TMC PART NUMBER SHALL BE IN THE FOLLOWING FORM:

CR-110-I-5.750000

BASIC TMC PART NUMBER AND TYPE. SEE CHART

FREQ. DESIRED IN MEGACYCLES (MC) EXAMPLES: (RESTRICT TO SEVEN DIGITS)

3.75000 = 3.750 MC
 9.000000 = 9 MC
 10.00000 = 10 MC
 16.87500 = 16.875 MC

STANDARD DRAWING

TTR-10

Q'TY./UNIT: 1
 SCALE: 1:1
 MODEL USED ON: C
 ASS'Y. NO.: S-401-251

THE CONTENTS OF THIS DRAWING ARE THE EXCLUSIVE PROPERTY OF THE TECHNICAL MATERIEL CORP. ITS UNAUTHORIZED USE OR REPRODUCTION IN WHOLE OR IN PART IS STRICTLY FORBIDDEN.

LIST OF MATERIAL

REQ'D. ITEM PART NUMBER DESCRIPTION SYMBOL

KOHN

MATERIAL: ————

FINISH: ————

THE TECHNICAL MATERIEL CORP.
MAMARONECK, NEW YORK

TITLE: CRYSTAL UNIT, QUARTZ

UNLESS OTHERWISE SPECIFIED DIMENSIONS ARE IN INCHES AND INCLUDE CHEMICALLY APPLIED OR PLATED FINISHES

DECIMALS: .X ± .05, .XX ± .01, .XXX ± .005
 FRACTIONS: ± 1/64, ANGLES: ± 0° 30'

DRAWN: R. Chouh
 CHECKED: R. Chouh
 ELECT. DES. DATE: 11-18-63
 MECH. DES. DATE: 12-2-63

FINAL APPROVAL: [Signature]
 DATE: 12-2-63

CR-110

REV. LTR. A