

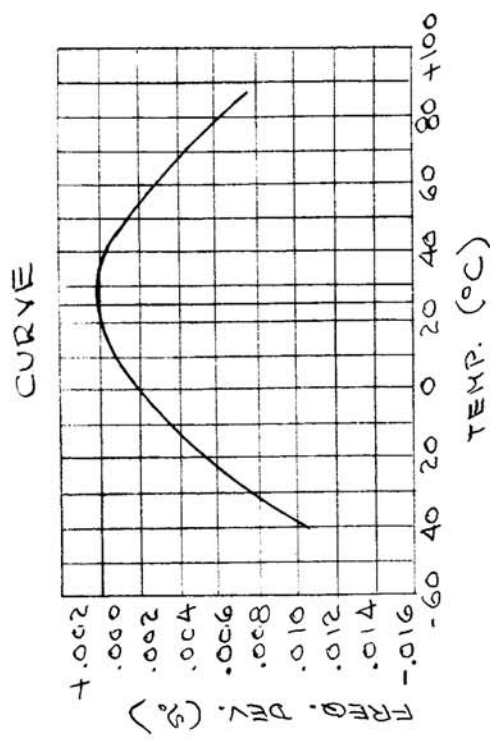
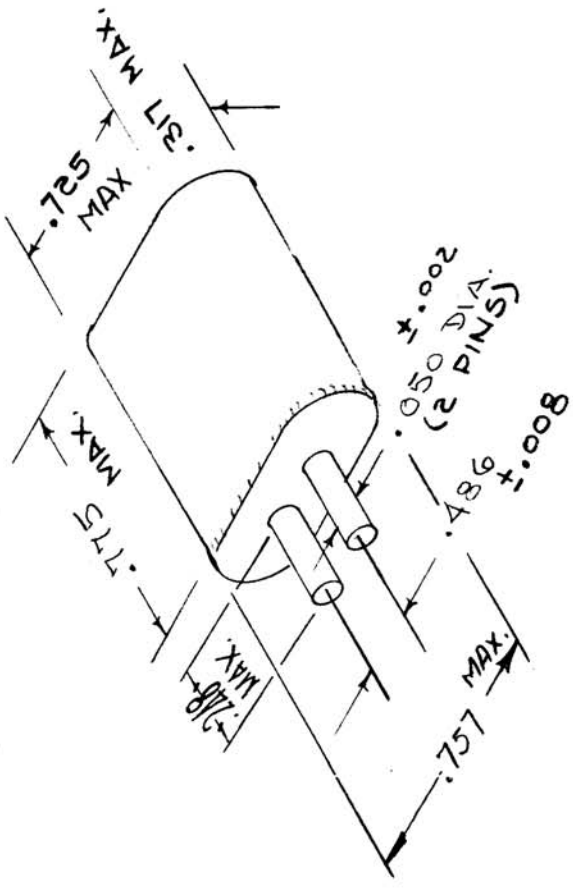
REQ. PER UNIT	MODEL	USED ON ASSY. NO.	DATE
		CR-10A	B

MILITARY HOLDERTYPE HC-6/U
 " CRYSTAL " CR-A/U
 " SPEC. MIL-C-12813A (MODIFIED)
 FREQ. RANGE 500-1200 KC
 MODE OF OPER. FUNDAMENTAL
 TEMP. RANGE -40 TO +70°C
 FREQ. TOL. ±.03%
 RESONANCE. SERIES
 DRIVE LEVEL : 3.9V
 MAX. RESISTANCE: 11,000 Ω
 MARKING: TO BE IN ACCORDANCE WITH MIL-C-3098.

REF:
 S401-251
 S401-129

STANDARD DRAWING

REQ. ITEM	PART NO.	DESCRIPTION	SYMBOL
		THE TECHNICAL MATERIEL CORP. MAMARONECK, NEW YORK	
		CR-A/U CRYSTAL UNIT (MODIFIED FOR HC-6/U HOLDER)	
		000 4/26/56	A.J.J.
		TYPE & TEMPER	CHECKED
		HEAT TREAT. SPEC.	FINAL APPROVAL
		FINISH & SPEC. NO.	CR-10A B
		MECH. DES. APP.	
		ELEC. DES. APP.	



ISSUE ITEM	CHANGED FROM	DATE	CH. NO.	DRAFTS	CHECKER	ENG. APP.
B 1	SPECS, REF & PICT. PINS REVISED	3-22-65	13707	APR	WFO	
A 1	ELEC. SPEC - RESONANCE / SERIES Added	7-6-61	5184	BDL	RUB	

SCALE:
 MAXIMUM ALLOWABLE TOLERANCES HAVE BEEN DETERMINED AND ANY DEVIATIONS WILL BE CAUSE FOR REJECTION.
 REMOVE ALL BURRS AND SHARP EDGES