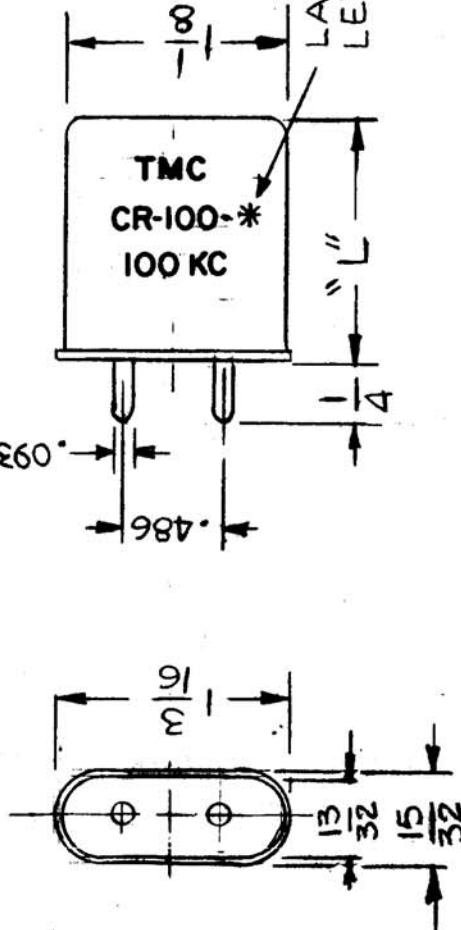


IF IT IS FOUND DESIRABLE TO CHANGE ANY TOLERANCE OR OTHER DETAIL SPECIFIED ON THIS DRAWING NOTIFY THE PURCHASER PROMPTLY.

MAXIMUM ALLOWABLE TOLERANCES HAVE BEEN DETERMINED AND DEVIATIONS WILL BE CAUSE FOR REJECTION. REMOVE ALL BURRS AND SHARP EDGES

CHARACTERISTICS:

1. HOLDER TYPE - SPECIAL
2. PARALLEL RESONANT FREQ. - 100KC
3. PARALLEL RESONANT LOAD CAP. - 27.6uuf. ± 10uuf
4. OPER. TEMP RANGE - 70°C
5. FREQUENCY TOL. - ± 0.05%
6. MODE OF OPERATION - FUNDAMENTAL
7. RATED DRIVE LEVEL - 2MW ± 5MW
8. MAX. EFFECTIVE RESONANT RESIS. - 3000 OHMS
9. CASE - ALUMINUM



NOTES: DIMENSIONS FOR REF. ONLY.

1. Test shall be made with Test Equip. Type TS-710 TSM.
2. Unit shall be marked with letters, TMC, and TMC part no. as shown in pictorial; Marking shall be rubber-stamped with black ink, silk-screened or equivalent process and shall have a clear coating to prevent removal of stamping.

ISSUE ITEM	CHANGED FROM	DATE	CN. NO.	DRAWING CHECKING ENG. APP.
F	CONFIGURATION REVISED	A-15-721505	GDL	W.I.B.
E	* ADDED	9/26/52	K.S.	J.A.O.

TOLERANCES

ALL OTHERS DEC. DIM. ±
FRAC. DIM. ±
ANGULAR DIM. ±

DRILL, PUNCH, COMMERCIAL STOCK SIZES AND MANUFACTURERS TOLERANCES ARE NOT INCLUDED.

SCALE ~ 5-401-77

CR-100

USED ON

REQ. PER UNIT	MODEL	PROJECT NO.	ASSY. NO.	DATE
1	VOX	101	A-586	8/20/52
1	DVM			12/28/52
1	PMO-2			11-10-52
1	RTF-2			

TYPE	"L" DIMENSION
BH1236	1 1/4

REQ. ITEM	PART NO.	DESCRIPTION	SYMBOL
	H	THE TECHNICAL MATERIEL CORP. MAMARONECK. NEW YORK	
	H	CRYSTAL UNIT	
	H	100 KC	
	H	STOCK SIZE	
	H	MATERIAL	
	H	WEIGHT PER PC.	
	H	TYPE & TEMPER	
	H	ELEC. DES. APP.	
	H	CHECKED	
	H	FINAL APPROVAL	
	H	FINISH & SPEC. NO.	

CR-100

F