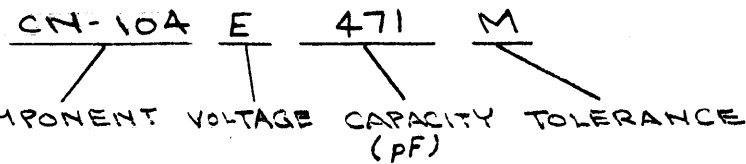


IF IT IS FOUND DESIRABLE TO CHANGE ANY TOLERANCE OR OTHER DETAIL SPECIFIED ON THIS DRAWING NOTIFY THE PURCHASER PROMPTLY.

MAXIMUM ALLOWABLE TOLERANCES HAVE BEEN DETERMINED AND DEVIATIONS WILL BE CAUSE FOR REJECTION. REMOVE ALL BURRS AND SHARP EDGES

TYPE DESIGNATION TO BE IN FOLLOWING FORM

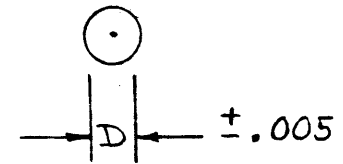
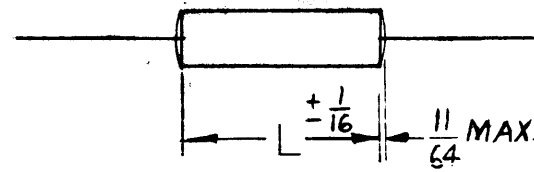


CN104† CN105 (SEE NOTE) CN 106† CN 107

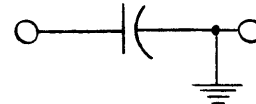
CN 104/5/6/7 B

STANDARD DRAWING

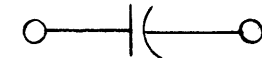
DIMENSIONS



CIRCUITS



TYPES CN104, CN106 ONE END GROUNDED



TYPES CN105, CN107 BOTH ENDS INSULATED

CAP. $\mu$ F	VOLTS				D		L	
	100	200	400	600	DIA.	LENGTH	DIA.	LENGTH
.001			400	600	.173	23/32	.173	9/16
.0015			400	600				
.0022			400	600				
.0033			400	600				
.0047			400	600				
.0062			400	600				
.01			400	600				
.015			400	600	.193		.193	
.022			400	600	.233		.233	23/32
.033			400	600	.233		.233	23/32
.047			400	600	.313		.233	
.062			400	600	.313	27/32	.313	27/32
.1			400	600	.400	1/16	.400	7/8
.15			400	600	.400	1/8	.400	1
.22			400	600	.560	1/8	.560	15/16
.33			400	600	.400	1/4	.400	1/8
.47			400	600	.500	1/8	.500	1/2
.62			400	600	.748	1/8	.560	1/4
.68			400	600	.748	1/8	.748	13/4
1.00			400	600	.560	11/32	.560	15/32
2.00			400	600	.748	2/16	.748	11/16
			400	600	.668	2/16	.668	23/16

\* CAPACITANCE VALUES OTHER THAN LISTED ABOVE BUT WITHIN THE LIMITS OF THE CHART ARE AVAILABLE IN TOL. M WITHOUT EXTRA COST, COMPARED TO STD. VALUES IN TOL. M.

† CN104 IS 1/16 SHORTER THAN CN105. CN106 IS 1/16 SHORTER THAN CN107

SPECIFICATIONS -

- 1- MYLAR DIELECTRIC
- 2- MIRACLE X IMPREGNATED.
- 3- TYPES CN104, CN105 EXTENDED FOIL CONSTRUCTION (RECOMMENDED FOR APPLICATIONS WHERE RESONANT LOSSES MUST BE SERIOUSLY CONSIDERED & WHERE VOLTAGES LESS THAN 10V. ARE APPLIED TO CAP.) TYPES CN106, CN107 ARE TAB CONSTRUCTION.
- 4- OPER. TEMP. RANGE - -65° TO +165° C.
- 5- LEADS - SOLID TINNED WIRE 1/2" ± 0"
  - 24 AWG UPTO & INCL. .193 DIA.
  - 22 AWG " " " " .312 " "
  - 20 AWG " " " " .400 " " & OVER

NOTE: 1 - LAST DIGIT INDICATES NUMBER OF ZEROS

MFG. REF:

612G - CN 104      613G - CN 105  
614G - CN 106      615G - CN 107

TOLERANCE	
E	± 0.5%
F	± 1%
G	± 2%
J	± 5%
K	± 10%
M	± 20%

VOLTAGE	
B	100
C	200
D	USE "E"
E	400
F	600

ISSUE	ITEM	CHANGED FROM	DATE	CN. NO.	DRAFTS	CHECKER	ENG. APP.
B		COMPLETELY REVISED	4-9-67	18037	L.A.K.		
A	1	NOTES CLARIFIED	7/13/63	10606			

TOLERANCES		SCALE: 5401-90
ALL OTHERS	DEC. DIM. ± FRAC. DIM. ± AN ULAR DIM. ±	DRILL PUNCH, COMMERCIAL STOCK SIZES AND MANUFACTURERS TOLERANCES ARE NOT INCLUDED.

REQ. PER UNIT	MODEL	PROJECT NO.	ASSY. NO.	DATE

REQ. ITEM	PART NO.	DESCRIPTION	SYMBOL
#		THE TECHNICAL MATERIEL CORP. MAMARONECK, NEW YORK	
#		CAPACITOR, FIXED (METAL CASE)	
#		"MYLAR" DIELECTRIC,	
#		CDD 11/22/54	
#		TYPE & TEMPER	
#		HEAT TREAT. SPEC.	
#		FINISH & SPEC. NO.	

CN 104/5/6/7 B