

IF IT IS FOUND DESIRABLE TO CHANGE ANY TOLERANCE OR OTHER DETAIL SPECIFIED ON THIS DRAWING NOTIFY THE PURCHASER PROMPTLY.

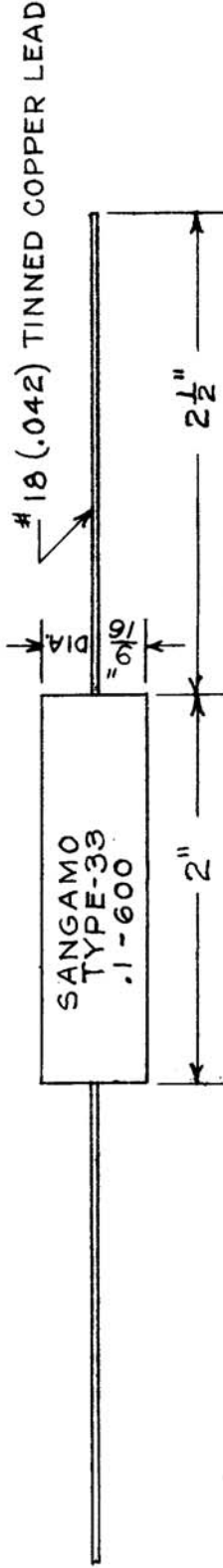
MAXIMUM ALLOWABLE TOLERANCES HAVE BEEN DETERMINED AND DEVIATIONS WILL BE CAUSE FOR REJECTION. REMOVE ALL BURRS AND SHARP EDGES

STANDARD DRAWING

CN-10001

USED ON

MODEL	PROJECT NO.	ASS'Y. NO.	DATE
AMC-6B			11-1-55



CAPACITY 0.1 μFD. 600 VOLTS. TOLERANCE ±10%

NOTICE TO PERSONS RECEIVING THIS DRAWING

THE TECHNICAL MATERIEL CORPORATION claims proprietary right in the material disclosed hereon. This drawing is issued in confidence for engineering information only and may not be reproduced or used to manufacture anything shown hereon without permission from THE TECHNICAL MATERIEL CORPORATION to the user. This drawing is loaned for mutual assistance and is subject to recall at any time.

Property of:

THE TECHNICAL MATERIEL CORPORATION
MAMARONECK, NEW YORK

REQ. ITEM	PART NO.	DESCRIPTION	SYMBOL
		TMC (Canada) LIMITED OTTAWA ONTARIO	
	STOCK SIZE	CAPACITOR, FIXED	
	MATERIAL	MOULDED PLASTIC	
	TYPE & TEMPER	J.W.T.	
	WEIGHT PER PC.	DRAWN	ELEC. DES. APP. MECH. DES. APP.
	HEAT TREAT. SPEC.	<i>Beck</i>	FINAL APPROVAL
	FINISH & SPEC. NO.		CN-10001

ISSUE ITEM	CHANGED FROM	DATE	CN. NO.	DRAFTS CHECKER	ENG. APP.
SCALE FULL SIZE					
DRILL, PUNCH, COMMERCIAL STOCK SIZES AND MANUFACTURERS TOLERANCES ARE NOT INCLUDED.					