

IF IT IS FOUND DESIRABLE TO CHANGE ANY TOLERANCE OR OTHER DETAIL SPECIFIED ON THIS DRAWING NOTIFY THE PURCHASER PROMPTLY.

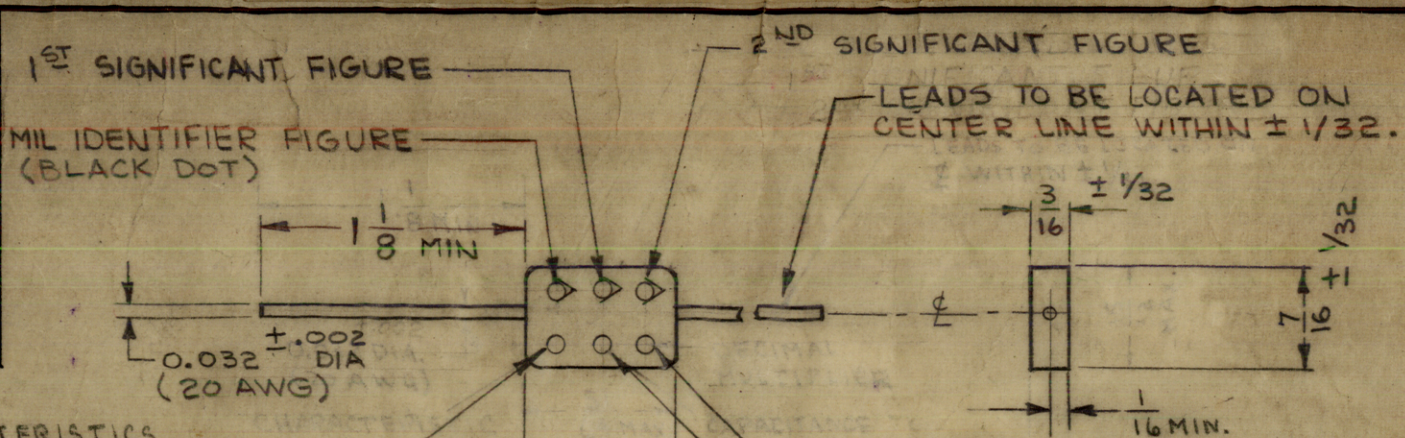
MAXIMUM ALLOWABLE TOLERANCES HAVE BEEN DETERMINED AND DEVIATIONS WILL BE CAUSE FOR REJECTION. REMOVE ALL BURRS AND SHARP EDGES

RELEASED STANDARD DRAWING

TYPE DESIGNATION	CAP. UUF	D.C. WKG. VTGE.	CHARACTERISTICS AVAILABLE AT				COLOR CODE		
			±2% (G)	±5% (J)	±10% (K)	±20% (M)	UPPER CENTER DOT	UPPER RIGHT DOT	LOWER RIGHT DOT
CM20-050-03	5								
CM20-100-03	10								
CM20-120-03	12								
CM20-150-03	15								
CM20-180-03	18								
CM20-200-03	20								
CM20-220-03	22								
CM20-240-03	24								
CM20-270-03	27								
CM20-300-03	30								
CM20-330-03	33								
CM20-360-03	36								
CM20-390-03	39								
CM20-430-03	43								
CM20-470-03	47								
CM20-510-03	51								
CM20-560-03	56								
CM20-620-03	62								
CM20-680-03	68								
CM20-750-03	75								
CM20-820-03	82								
CM20-910-03	91								
CM20-101-03	100								
CM20-111-03	110								
CM20-121-03	120								
CM20-131-03	130								
CM20-151-03	150								
CM20-161-03	160								
CM20-181-03	180								
CM20-201-03	200								
CM20-221-03	210								
CM20-241-03	240								
CM20-271-03	270								
CM20-301-03	300								
CM20-331-03	330								
CM20-361-03	360								
CM20-391-03	390								
CM20-431-03	430								
CM20-471-03	470								
CM20-511-03	510								
CM20-561-03	560	500	DF	BDF	BD	GREEN	BLUE	BROWN	
CM20-621-03	620	500	DF	BDF	B	BLUE	RED	do	
CM20-681-03	680	500	DF	BDF	BD	do	GREEN	do	
CM20-751-03	750	500	DF	BDF	B	VIOLET	GREEN	do	
CM20-821-03	820	500	DF	BDF	BD	GREY	RED	do	
CM20-911-03	910	500	DF	BDF	B	WHITE	BROWN	do	
CM20-102-03	1000	500	DF	BDF	BD	BROWN	BLACK	RED	
CM20-112-03	1100								
CM20-122-03	1200								
CM20-132-03	1300								
CM20-152-03	1500								
CM20-162-03	1600								
CM20-182-03	1800								
CM20-202-03	2000								

CAPACITANCE VALUES FROM 5 TO 510 uuf FORMERLY INCLUDED IN STYLE CM20 SHALL BE REPLACED BY THE APPROPRIATE VALUES IN STYLE CM15 (REF: S-805)

CM20

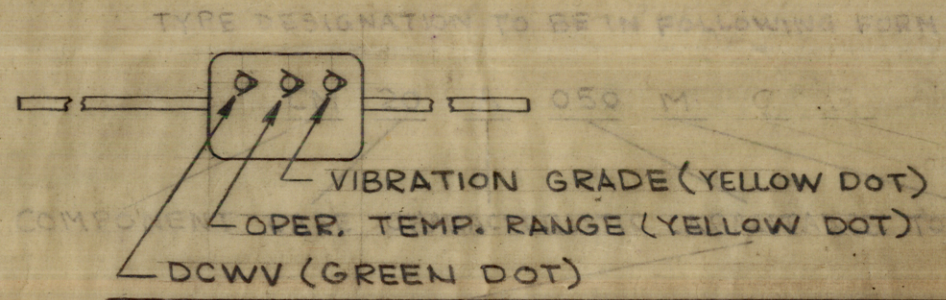


CHARACTERISTICS

	TEMP. COEF. parts/mi./°C	CAP. DRIFT (MAX)
A	NOT SPECIFIED	NOT SPECIFIED
B	do.	do.
C	-200 to +200	±0.5%
D	-100 to +100	±0.3%
E	-20 to +100	±(0.1% + 0.1uuf)
F	0 to +70	±(0.05% + 0.1uuf)
G	0 to +50	do

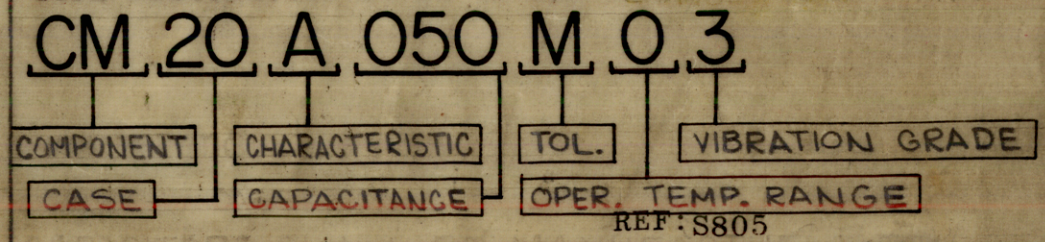
COLOR CODE

COLOR	CAPACITANCE SIG. FIGURE	DEC. MULT.	TOLERANCE %	CHARACTERISTIC
BLACK	0	1	20(M)	A
BROWN	1	10	—	B
RED	2	100	2(G)	C
ORANGE	3	1000	—	D
YELLOW	4	—	—	E
GREEN	5	—	5(J)	F
BLUE	6	—	—	G
VIOLET	7	—	—	—
GREY	8	—	—	—
WHITE	9	—	—	—
GOLD	—	0.1	—	—
SILVER	—	.01	10(K)	—



**SPECIFICATIONS**  
 OPER. TEMP. RANGE -55 TO +125°C (o)  
 VIBRATION GRADE -10 TO 2000 CPS (3)  
 INSULATION RESISTANCE - (25°C) 50KΩ MIN. (125°C) 10KΩ MIN.  
 APPROX. WEIGHT - 0.10 OUNCES  
 MOISTURE RESISTANCE - 3% OR 1.0 uuf CAP. CHANGE, MAX.

TYPE DESIGNATION TO BE IN THE FOLLOWING FORM:



CAPACITORS SHALL BE MANUFACTURED TO REQUIREMENTS OF MIL-C-20 & AMEND.

REQ. ITEM	PART NO.	DESCRIPTION	SYMBOL
		THE TECHNICAL MATERIEL CORP. MAMARONECK, NEW YORK	
		CAPACITOR, FIXED, MICA DIELECTRIC	
		STOCK SIZE	
		MATERIAL	WEIGHT PER PC.
		TYPE & TEMPER	
		HEAT TREAT. SPEC.	
		FINISH & SPEC. NO.	

NOTE 1: "FOR SPECIAL VOLTAGES SEE TMC CM100".

ISSUE	ITEM	CHANGED FROM	DATE	CN. NO.	DRAFTS	CHECKER	ENG. APP.
G		DELE "YY" & MIL-G-5 REE NOTE	130.68	18749			

MODEL	PROJECT NO.	ASSY. NO.	DATE
XFK			