

IF IT IS FOUND DESIRABLE TO CHANGE ANY TOLERANCE OR OTHER DETAIL SPECIFIED ON THIS DRAWING NOTIFY THE PURCHASER PROMPTLY.

MAXIMUM ALLOWABLE TOLERANCES HAVE BEEN DETERMINED AND DEVIATIONS WILL BE CAUSE FOR REJECTION. REMOVE ALL BURRS AND SHARP EDGES

STANDARD DRAWING

D
CM-108

CHART "A"

IN ACCORDANCE WITH MIL-C-5A CM30 LISTINGS.
CAP. RANGE: 560 TO 3300 μ fd.s.
TEMP. " : -55°C TO +130°C

CAT No.	CAP. μ fd.s.	CHARACTERISTICS AT CAP. TOL. *			
		$\pm 2\%$ G	$\pm 5\%$ J	$\pm 10\%$ K	$\pm 20\%$ M
1A5T56	560	CDE	BCDE	BCDE	—
1A5T62	620				
1A5T68	680			BCDE	BCDE
1A5T75	750				
1A5T82	820			BCDE	
1A5T91	910				
1A5D1	1000			BCDE	BCDE
1A5D11	1100				
1A5D12	1200			BCDE	
1A5D13	1300				
1A5D15	1500			BCDE	BCDE
1A5D16	1600				
1A5D18	1800			BCDE	
1A5D2	2000				
1A5D22	2200			BCDE	BCDE
1A5D24	2400				
1A5D27	2700			BCDE	
1A5D3	3000				
1A5D33	3300	↓	↓	BCDE	BCDE

CHART "B"

CD EXTENDED RATINGS BEYOND MIL-C-5A CM30 LISTINGS
CAP. RANGE: 3600 TO 20,000 μ fd.s.
TEMP. " : -55°C TO +130°C.

CAT. NO.	CAP. μ fd.s.	VDCW	CHARACTERISTICS AT CAP. TOLERANCE *			
			$\pm 2\%$ G	$\pm 5\%$ J	$\pm 10\%$ K	$\pm 20\%$ M
1A5D36	3600	500	BCDEF	BCDEF		
1A5D39	3900				BCDEF	
1A5D43	4300					
1A5D47	4700				BCDEF	BCDEF
1A5D51	5100					
1A5D56	5600					
1A5D62	6200					
1A5D68	6800				BCDEF	BCDEF
1A5D75	7500					
1A5D82	8200				BCDEF	
1A5D91	9100					
1A5S1	10,000				BCDEF	BCDEF
1A5S11	11,000					
1A5S12	12,000				BCDEF	
1A5S13	13,000					
1A5S15	15,000	↓			BCDEF	BCDEF
1A5S16	16,000	300				
1A5S18	18,000	↓			BCDEF	
1A3S2	20,000	↓	↓	↓		

CHARACTERISTICS

	TEMP. COEM PARTS/MI./°C	CAP. DRIFT (MAX.)
F	0 TO +70	$\pm(0.05\% \pm 0.1 \mu\text{mf})$
G	0 TO +50	$\pm(0.05\% \pm 0.1 \mu\text{mf})$

TOLERANCE

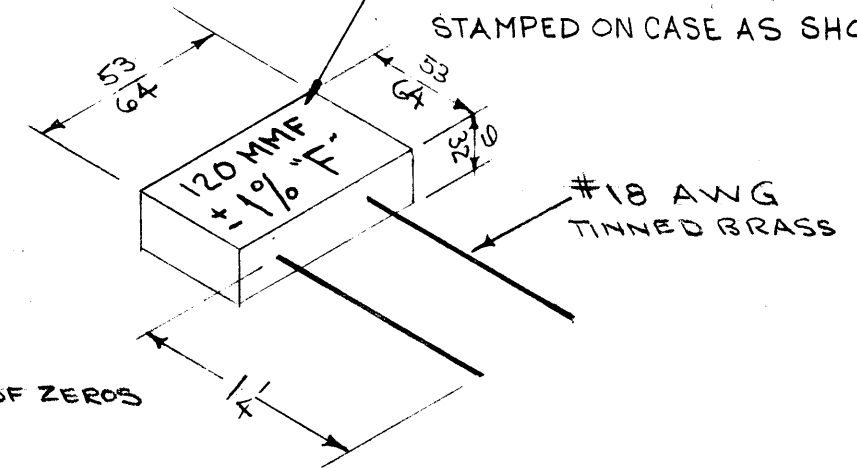
E	$\pm 0.5\%$
F	$\pm 1\%$
G	$\pm 2\%$
J	$\pm 5\%$
K	$\pm 10\%$
M	$\pm 20\%$

NOTE:

APPROPRIATE CAP. TOL. & CHARACTERISTIC SHALL BE STAMPED ON CASE AS SHOWN.

EXAMPLES
12.25 = 12R25
122.5 = 122R5
1225 = 12250
12250 = 12251

4 DIGITS NO OF ZEROS



TYPE DESIGNATION SHALL BE IN FOLLOWING FORM.
5th DIGIT INDICATES # ZEROS

CM-108 - F - 1225¹ - E

COMPONENT CHARACTERISTIC CAP. IN TOLERANCE μ mf (SEE NOTE)

NOTE:

- 1- CAPACITANCE TO BE SPECIFIED TO 4 DIGITS.
- 2- 5th DIGIT IS ADDED TO INDICATE NO OF ZEROS.
- 3- WHERE DECIMAL POINT IS INCLUDED (BY R) 5th DIGIT OMITTED
- 4- SEE EXAMPLES ABOVE.

REF: CORNELL DUBILIER (SUPER MICADOM)

* 1- STANDARD TOL. $\pm 5\%$. (TOL. OF $\pm 1/2$ OF 1% AVAILABLE ON REQUEST)

2- CHAR. "F" AVAILABLE IN 5% OR CLOSER TOL., (APPLIES TO CHART "A" ONLY)

WARNING

THIS CAP. IS MANUFACTURED IN CHAR. B THROUGH E & TOL. M THRU G. HOWEVER, IN ORDER TO AVOID DUPLICATION AND GOV. ACCEPTANCE DIFFICULTIES, CONVENTIONAL MICA CAPACITORS SHOULD BE USED IN THESE RANGES

ISSUE	ITEM	CHANGED FROM	DATE	CN. NO.	DRAFTS	CHECKER	ENG. APP.
D	1	NOTE ADDED	8-8-62	7041	G.S.	JLB	
C	2	Examples Clarified	2/19/58	3	file	JLB	
B	1	Notes Clarified	6-23-55	2	ROS		
A	1	EXAMPLES ADDED	7-29-54	1	a.D.D.	KZ	

TOLERANCES		SCALE:	
ALL OTHERS	DEC. DIM. \pm FRAC. DIM. \pm ANGULAR DIM. \pm	DRILL, PUNCH, COMMERCIAL STOCK SIZES AND MANUFACTURERS TOLERANCES ARE NOT INCLUDED.	

MODEL	PROJECT NO.	ASS'Y. NO.	DATE
USED ON			

REQ. ITEM	PART NO.	DESCRIPTION	SYMBOL
#		THE TECHNICAL MATERIEL CORP. MAMARONECK, NEW YORK	
#		CAPACITOR, MICA-FIXED	
#		PRECISION	
#		CD. 5-18-54	KZ
#		DRAWN	ELEC. DES. APP. MECH. DES. APP.
#		CHECKED	FINAL APPROVAL
#			CM-108/D