

5

4

3

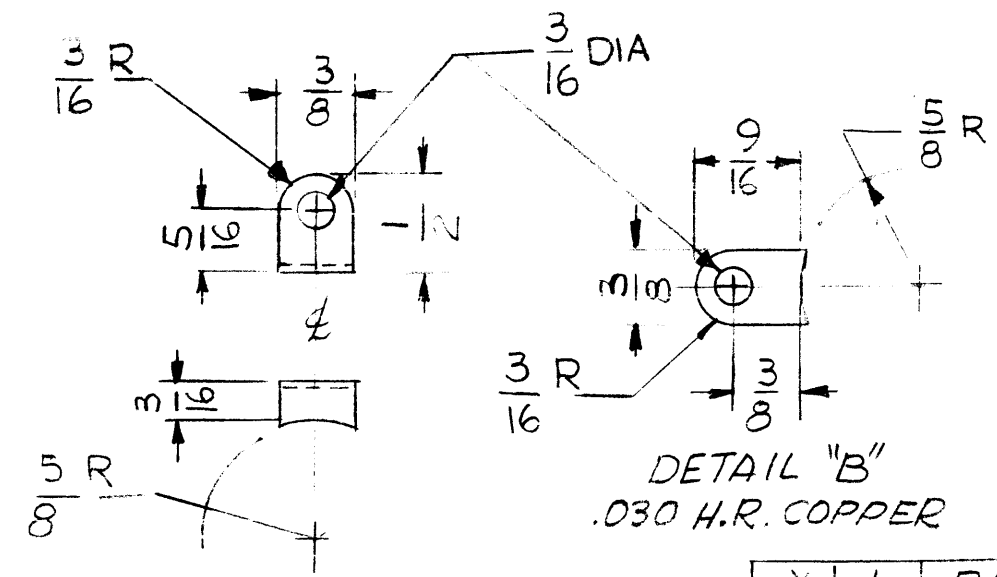
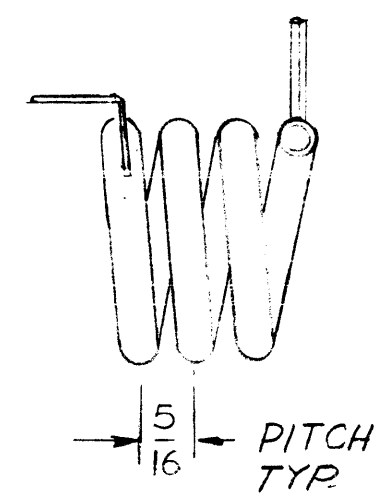
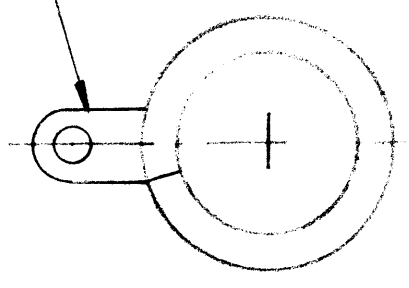
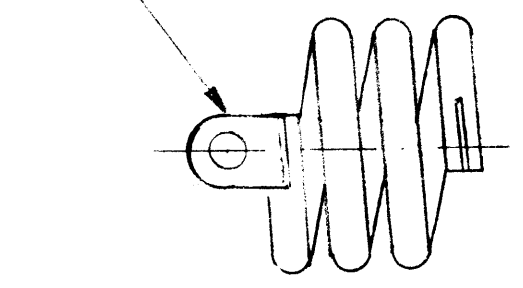
2

1

| REVISIONS | | | | | | | |
|------------|--------|------|------|-----|--------------|------|----------|
| E.M.N. NO. | DRAFT | CHKD | ZONE | LTR | DESCRIPTION | DATE | APPROVED |
| | G.D.L. | | | X | EXP. RELEASE | | |
| # | CL | J.B. | | Ø | | 8/76 | * |

DETAIL "A"

DETAIL "B"



SPECIFICATIONS:
 COIL TO BE 3 TURNS OF 3/16 COPPER TUBING.
 USE ITEM 1 TO ATTACH STRAPS TO COIL.
 FINISH: S245 SIL PLATE, SIL KOTE S423
 O.D. 1 1/4 I.D. 7/8

DETAIL "A"
 .030 H.R. COPPER

DETAIL "B"
 .030 H.R. COPPER

| REQ'D | ITEM | PART NUMBER | DESCRIPTION | SYM |
|-------|------|-------------|---------------|-----|
| X | 1 | BS101 | SOLDER SILVER | |

LIST OF MATERIAL

| | | |
|-------------|---------------|-----------|
| 2 | TLAA-1K | AS15 |
| QTY / UNIT | MODEL USED ON | ASS'Y NO. |
| APPLICATION | | |
| CODE | | |

NOTICE TO PERSONS RECEIVING THIS DRAWING
 THE TECHNICAL MATERIEL CORPORATION claims proprietary right in the material disclosed hereon. This drawing is issued in confidence for engineering information only and may not be reproduced or used to manufacture anything shown hereon without permission from THE TECHNICAL MATERIEL CORPORATION to the user. This drawing is loaned for mutual assistance and is subject to recall at any time.

| | | |
|---|---------------------------------|----------------|
| UNLESS OTHERWISE SPECIFIED DIMENSIONS ARE IN INCHES AND INCLUDE CHEMICALLY APPLIED OR PLATED FINISHES | FINAL APPROVAL * [Signature] | DATE 9-7-76 |
| MECH. DES. | | DATE |
| ELECT. DES. | | DATE |
| CHECKED | | DATE |
| MATERIAL SEE NOTES | DRAWN G.D.L. | DATE 1-7-76 |
| FINISH SEE NOTES | | |

| | | | |
|--|--------------------------|-------------------|----------|
| THE TECHNICAL MATERIEL CORP. MAMARONECK, NEW YORK | | | |
| COIL INDUCTANCE | | | |
| SIZE B | CODE IDENT. NO. 82679 | DWG NO. CL 493 | IS |
| SCALE 1:1 | | | SHEET OF |

5

4

3

2

1