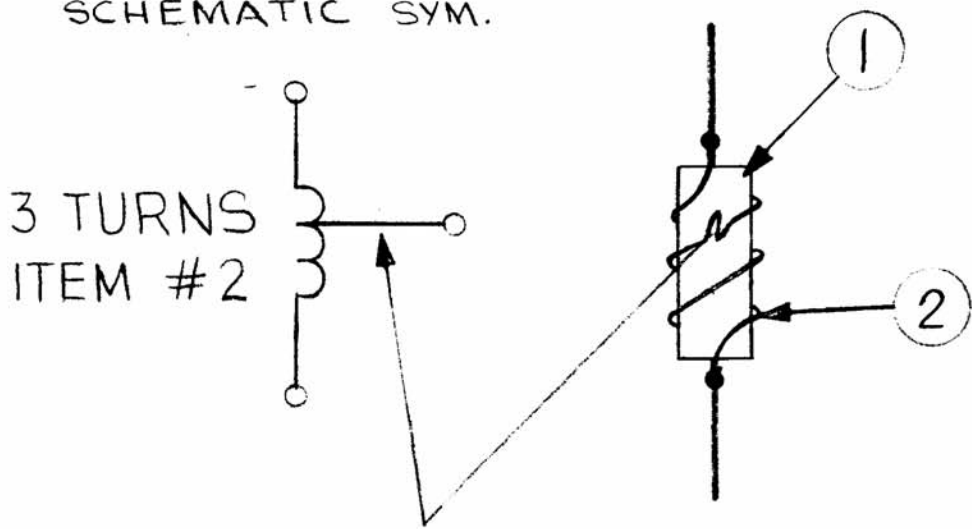


APPLICATION			REVISIONS							
QTY	MODEL USED ON	ASS'Y NO.	LTR	DESCRIPTION	DATE	E.M.N.NO	DRAFT	CHKD	APPD	
1	A5625		Ø	EXP RELEASE	4-2-75			F.I.	*	

SCHEMATIC SYM.



TAP AT ONE (1) TURN
DO NOT TIN PLATE

USE FOR
SPARE PARTS ONLY

REQ'D	ITEM	PART NUMBER	DESCRIPTION	SYM.
X	3	BS100	SOLDER, TIN ALLOY	
X	2	W1100-8-1000	WIRE, SOLID TINNED	
1	1	RC076F822J	RESISTOR, FXD., COMP.	

UNLESS OTHERWISE SPECIFIED
DIMENSIONS ARE IN INCHES
AND INCLUDE CHEMICALLY APPLIED
OR PLATED FINISHES

DECIMALS	FRACTIONS	TOLS.	ANGLES
.X ± .05	1/64		
.XX ± .01			0°-30'
.XXX ± .005			

LIST OF MATERIAL			
FINAL APPROV. <i>EB</i>	DATE <i>7/1/77</i>	THE TECHNICAL MATERIEL CORP. MAMARONECK, NEW YORK COIL, TAPPED R.F.	
MECH. DES. <i>F. IANNUZZI</i>	DATE <i>4-2-75</i>		
ELECT. DES.	DATE		
CHECKED	DATE		
DRAWN <i>F. IANNUZZI</i>	DATE <i>4-2-75</i>		

NOTICE TO PERSONS RECEIVING THIS DRAWING
THE TECHNICAL MATERIEL CORPORATION claims proprietary right in the material disclosed hereon. This drawing is issued in confidence for engineering information only and may not be reproduced or used to manufacture anything shown hereon without permission from **THE TECHNICAL MATERIEL CORPORATION** to the user. This drawing is loaned for mutual assistance and is subject to recall at any time.

SIZE	CODE IDENT. NO.	DWG NO.	ISSUE
A	82679	CL490	Ø
SCALE 4:1		SHEET	OF