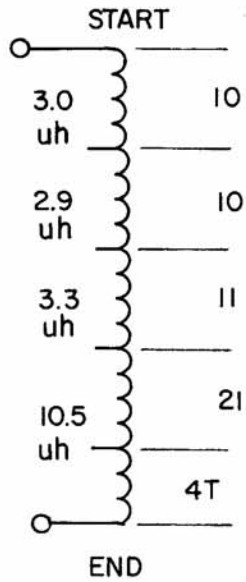
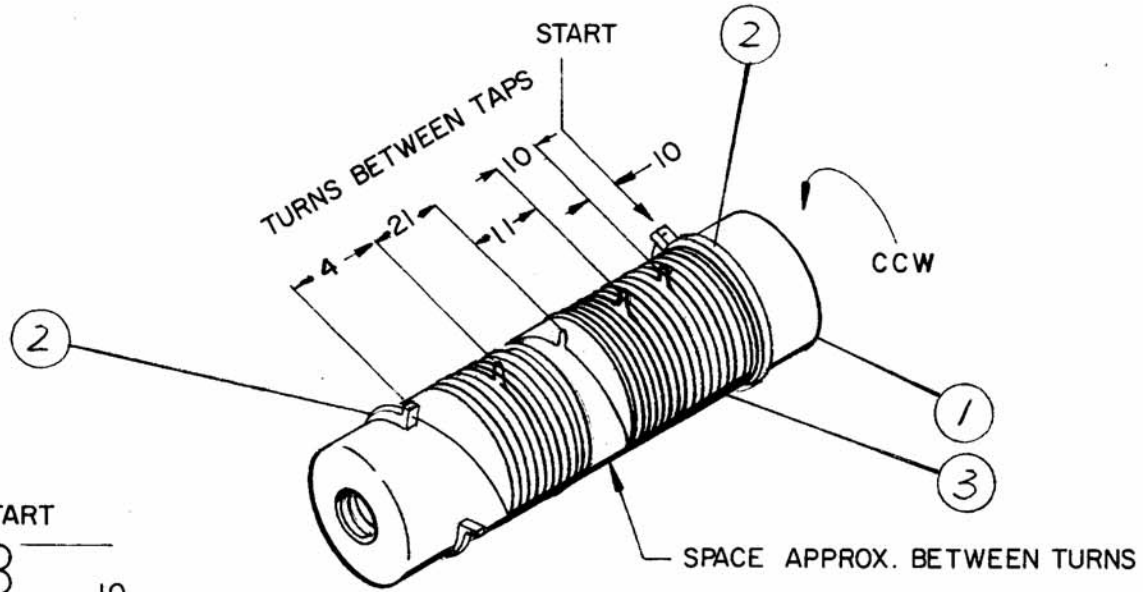


APPLICATION			REVISIONS						
QTY	MODEL USED ON	ASS'Y NO.	LTR	DESCRIPTION	DATE	E.M.N.NO	DRAFT	CHKD	APPD
1	TM125		Ø	ORIG RELEASE FOR PROD	3/23/73		CL		



MFR. ASSY. INSTRUCTIONS

1. PLACE ITEM 2 ON ITEM 1 (OPEN TERMINAL RING TO FIT INSULATOR STANDOFF)
2. WIND ITEM 3 ON ITEM 1 AS SHOWN AND SOLDER TO ITEM 2.
3. COAT COIL WITH ITEM 4 & BAKE IN OVEN 1/2 HR. AT 215° F

REQ'D	ITEM	PART NUMBER	DESCRIPTION	SYM.
X	4	GL104-2	INS. VARNISH ELEC.	
X	3	WI122-25	WIRE, ELEC.	
2	2	TE153-3	TERMINAL RING TYPE	
1	1	NS3W0320	INSULATOR STANDOFF ROUND	

UNLESS OTHERWISE SPECIFIED DIMENSIONS ARE IN INCHES AND INCLUDE CHEMICALLY APPLIED OR PLATED FINISHES

DECIMALS	FRACTIONS
.X ± .05	1/64
.XX ± .01	TOLS. ANGLES
.XXX ± .005	0° - 30'

O.P.				LIST OF MATERIAL	
FINAL APPROVAL	DATE	THE TECHNICAL MATERIEL CORP. MAMARONECK, NEW YORK <i>OUTPUT LOAD COIL</i>			
MECH. DES.	DATE				
ELECT. DES.	DATE				
CHECKED	DATE				
DRAWN	DATE				

MATERIAL
FINISH

NOTICE TO PERSONS RECEIVING THIS DRAWING
THE TECHNICAL MATERIEL CORPORATION claims proprietary right in the material disclosed hereon. This drawing is issued in confidence for engineering information only and may not be reproduced or used to manufacture anything shown hereon without permission from THE TECHNICAL MATERIEL CORPORATION to the user. This drawing is loaned for mutual assistance and is subject to recall at any time.

SIZE	CODE IDENT. NO.	DWG NO.	ISSUE
A	82679	CL 476	Ø
SCALE	SHEET		OF