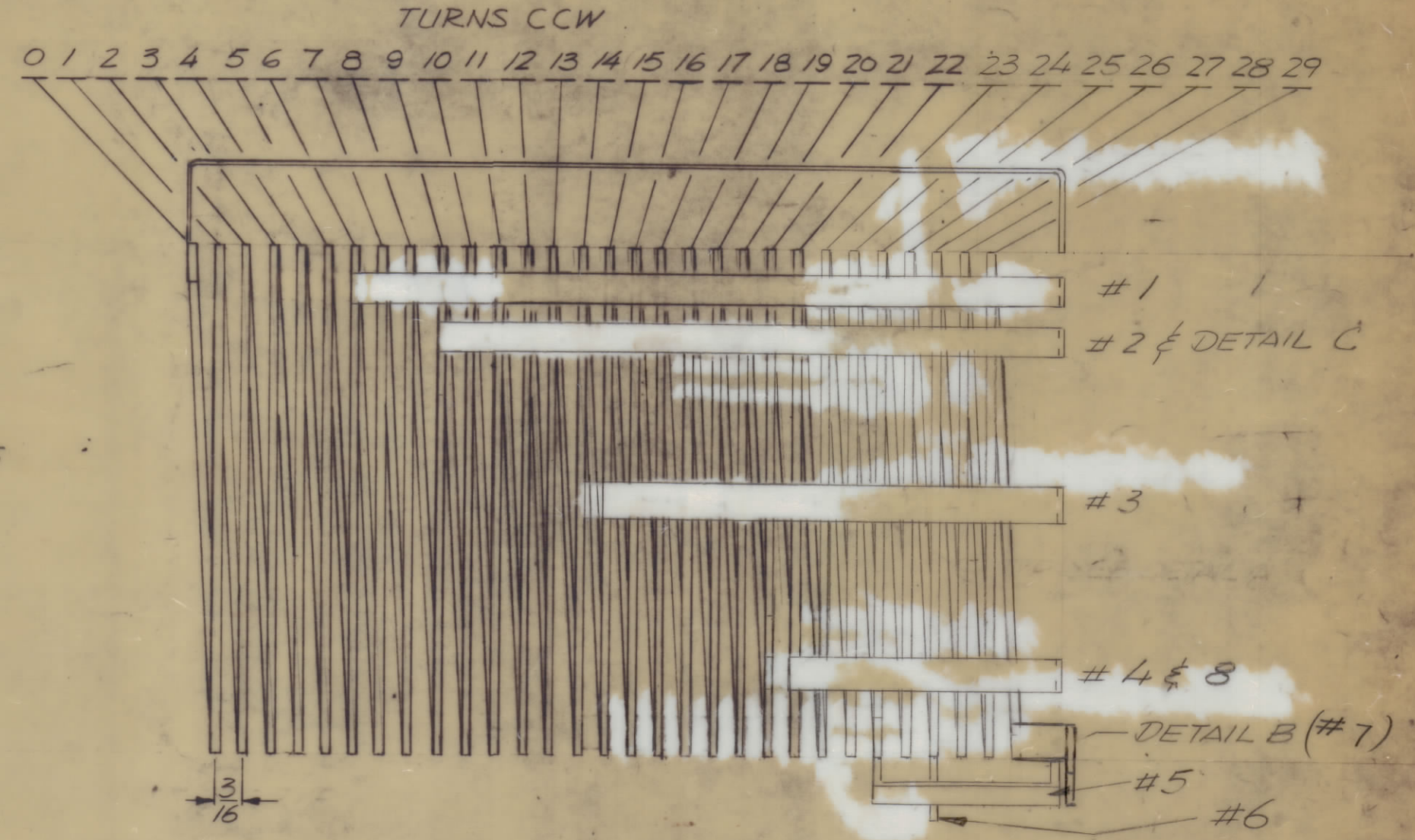
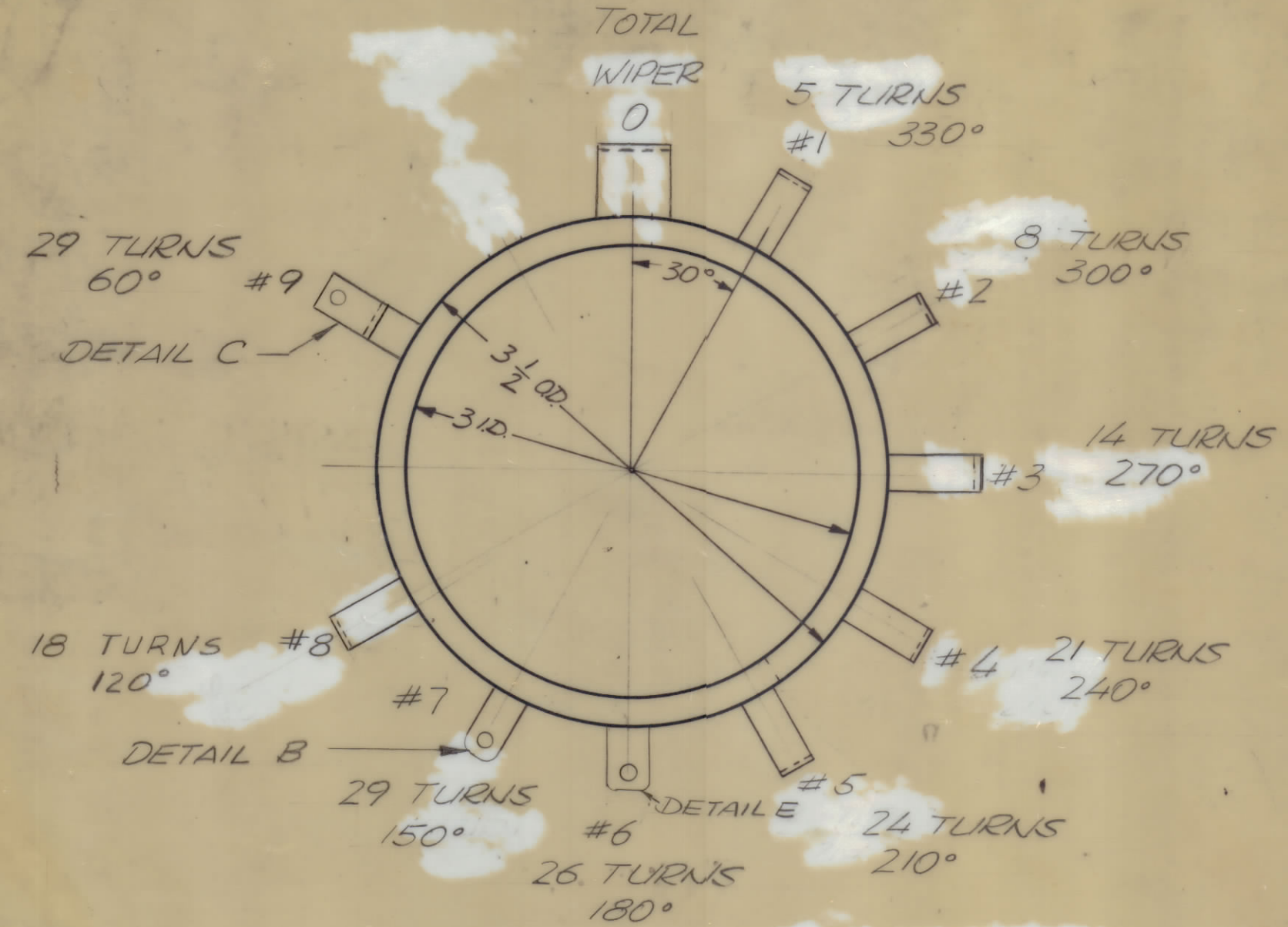
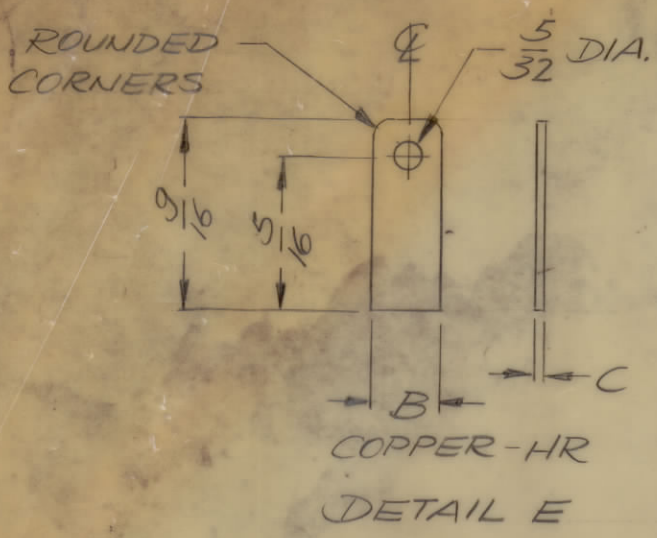
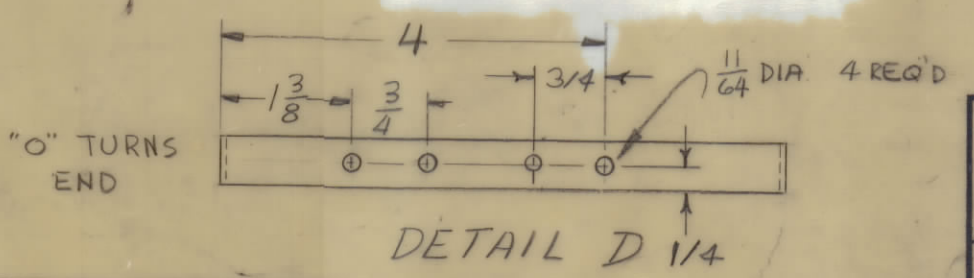
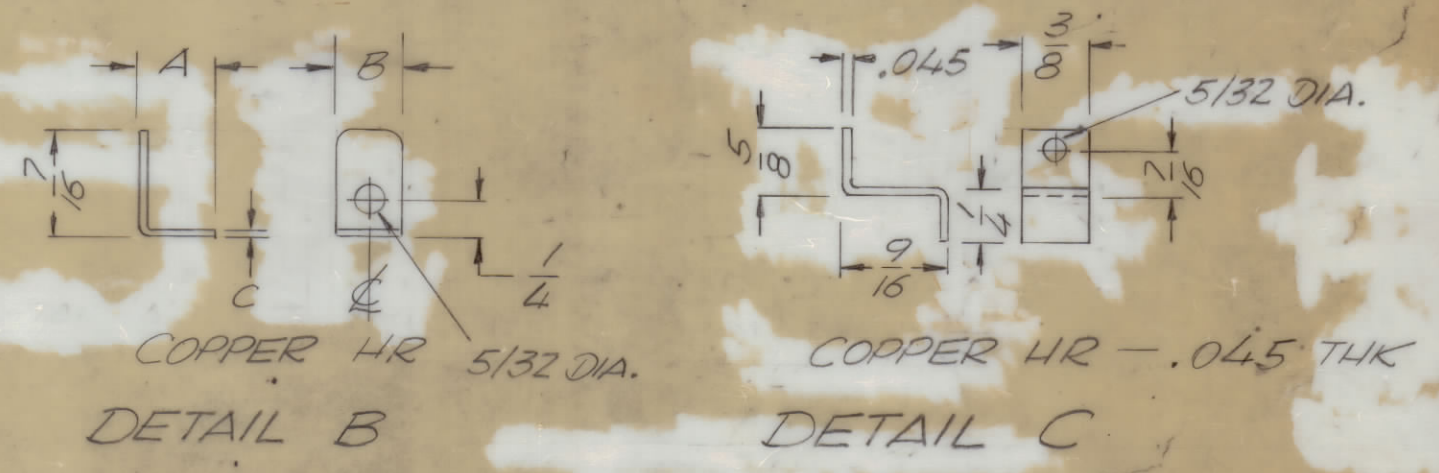
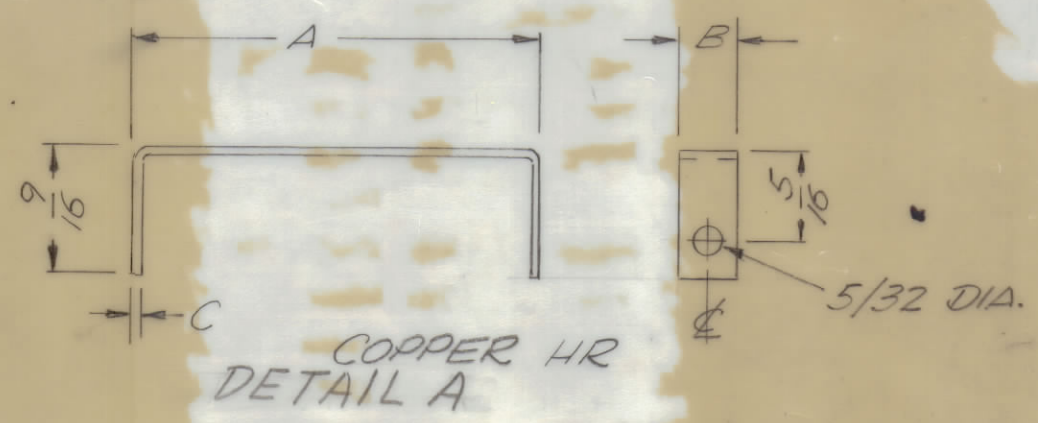


REVISIONS							
E.M.N.NO	DRAFT	CHKD	ZONE	LTR	DESCRIPTION	DATE	APPROVED
	W			X	ORIGINAL RELEASE FOR PRODUCTION	10/26/70	
20198	JM	W		A	Add Det. D; Tap B was 20T, 90°; Dim A chg on 0, 1, 2, 8	11 Jan 71	PEB
20289	RZ	W		B	ADD. HOLE ON DETAIL D; CHG. NO. TURNS TO 21	4-1-71	PEB
20676	GE	EJ		C	ADD DETAIL E TAP B WAS 21 TURNS	5-8-72	GE
21423	GDL	W		D	REVISED TAPS #9 & #7	6-30-76	GE



NOTE: CUT OFF EXCESS COIL AFTER BRAZING OF LEGS TO COIL.

LEG	DETAIL	A	B	C
0 WIPER	A-D	5 1/8	1/2	.060
1	A	4 1/16	1/4	.045
2	A	4 3/16	1/4	.045
3	A	3 1/16	1/4	.045
4	A	1 3/4	1/4	.045
5	A	1 3/16	1/4	.045
6	E	NONE	1/4	.045
7	B	1/4	3/8	.045
8	A	2 3/8	1/4	.045
9	C	AS NOTED	AS NOTED	AS NOTED



1	TLAM-1K	AS 147
QTY / UNIT	MODEL USED ON	ASS'Y NO.
APPLICATION		
CODE		

NOTICE TO PERSONS RECEIVING THIS DRAWING
THE TECHNICAL MATERIEL CORPORATION claims proprietary right in the material disclosed herein. This drawing is issued in confidence for engineering information only and may not be reproduced or used to manufacture anything shown herein without permission from THE TECHNICAL MATERIEL CORPORATION to the user. This drawing is loaned for mutual assistance and is subject to recall at any time.

UNLESS OTHERWISE SPECIFIED DIMENSIONS ARE IN INCHES AND INCLUDE CHEMICALLY APPLIED OR PLATED FINISHES		FINAL APPROVAL J.M. DATE 26 Oct 70
TOLERANCES ON		MECH. DES. R.C. DATE 10/26/70
DECIMALS	FRACTIONS	ELECT. DES. DATE
.X ± .05	± 1/64	CHECKED DATE
.XX ± .01	ANGLES	DRAWN G. EVANGELIST DATE
.XXX ± .005	± 0° - 30'	
MATERIAL AS NOTED		
FINISH S245		

1	1	CL133-5R30CC	COIL RF	
QTY. REQ.	ITEM	PART NO.	DESCRIPTION	SYMBOL
F. BUDETTI LIST OF MATERIAL				
THE TECHNICAL MATERIEL CORP. MAMARONECK, NEW YORK				
COIL, MAIN TANK				
SIZE	CODE	IDENT NO.	DWG NO.	ISSUE
C	82679	CL 462		D
SCALE		SHEET OF		