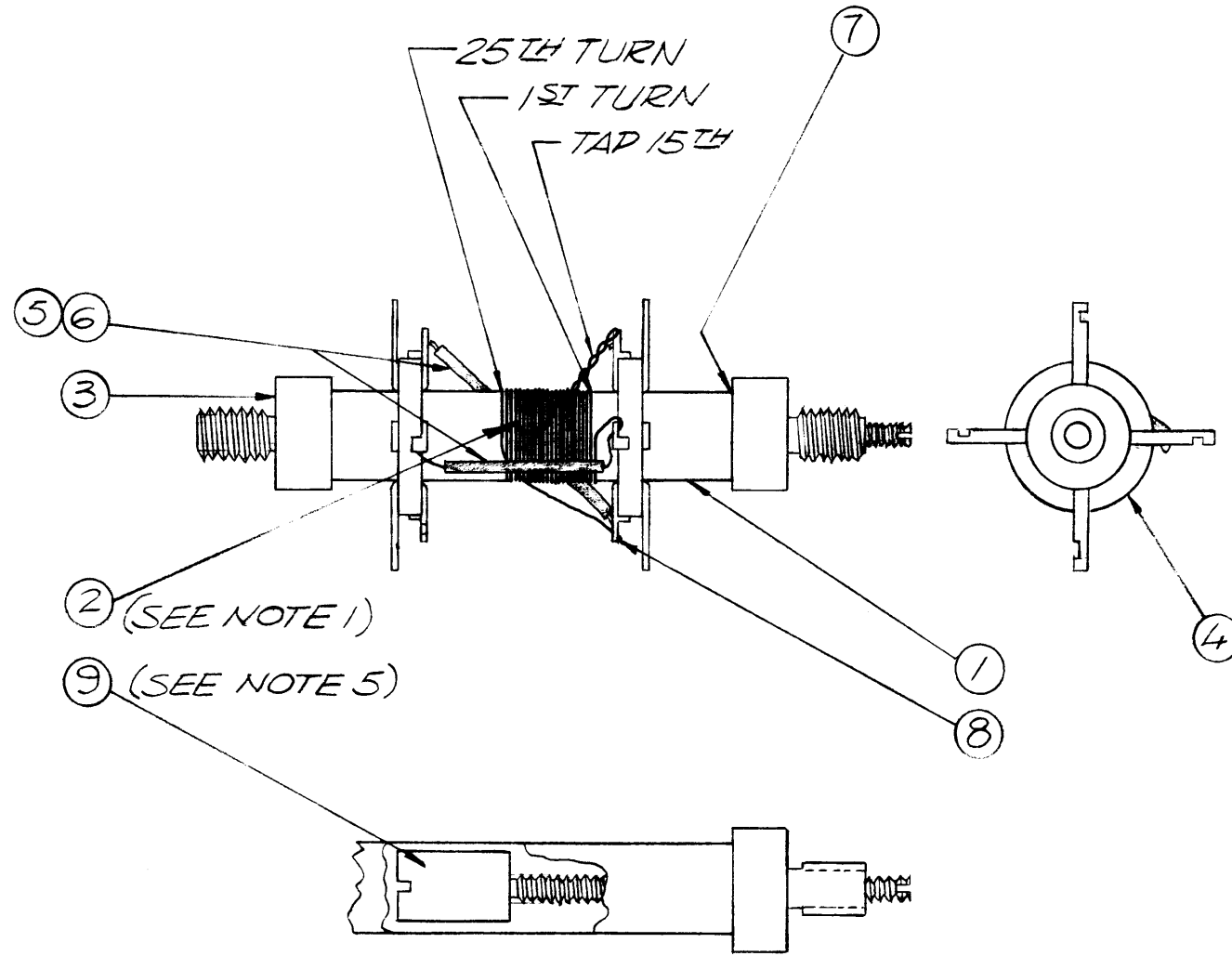


~NOTES~

1. WIND ITEM 2, 25 TURNS CLOCKWISE AROUND ITEM 1 AND TAP AT 15 TURNS.
2. FASTEN ITEM 3 TO ITEM 1 WITH ITEM 7.
3. FASTEN ITEM 4 TO ITEM 1 WITH ITEM 7.
4. USE ITEM 8 TO FASTEN WIRE CONNECTIONS.
5. INSERT ITEM 9 FROM END THAT HAS 15 WIRED TURNS (PICTURE RIGHT SIDE)



REVISIONS						
ZONE	LTR	DESCRIPTION	DATE	E.M.N.NO	DRAFT	CHKD APPD
	X	EXP RELEASE	10/29/69		GE	
	Ø	ORIGINAL RELEASE	2/16/70		GE	
	A	IT. CHG FRM CF122 TO CF122-137	4/21/70	19816	GE	W.B. FB
	E	ADD 2ND JUMPER	5/20/70	19903	GE	W.B. FB
	C	CHG P/N IT. 4	12/7/70	20141	GE	W.P.E.A.

1	9	CI-116-18	CORE TUNING	
X	8	BS 100	SOLDER, SOFT	
X	7	GL 130	DUCO CEMENT	
X	6	PX 104-2	SLEEVING INS.	
X	5	WL 100-8	BUSS WIRE	
2	4	TE181-4	COLLAR RING	
2	3	SM140-2	BUSHING COIL FORM	
X	2	WI 123-30	WIRE ELECTRICAL	
1	1	CF122-1.37	COIL FORM	
REQ'D	ITEM	PART NUMBER	DESCRIPTION	SYM.

LIST OF MATERIAL

	HFLA-10K	AX 5113
	PALA 10K	AX 5080
QTY / UNIT	MODEL USED ON	ASS'Y NO.
APPLICATION		
	CODE	

**NOTICE TO PERSONS RECEIVING THIS DRAWING**  
 THE TECHNICAL MATERIEL CORPORATION claims proprietary right in the material disclosed hereon. This drawing is issued in confidence for engineering information only and may not be reproduced or used to manufacture anything shown hereon without permission from THE TECHNICAL MATERIEL CORPORATION to the user. This drawing is loaned for mutual assistance and is subject to recall at any time.

UNLESS OTHERWISE SPECIFIED DIMENSIONS ARE IN INCHES AND INCLUDE CHEMICALLY APPLIED OR PLATED FINISHES

DECIMALS .X ± .05  
.XX ± .01  
.XXX ± .005

FRACTIONS 1/64  
ANGLES 0° -30'

TOLS.

MATERIAL

FINISH

FINAL APPROVAL	DATE
MECH. DES.	DATE
ELECT. DES.	DATE
CHECKED	DATE
DRAWN	DATE

THE TECHNICAL MATERIEL CORP.  
 MAMARONECK, NEW YORK

COIL, RF, ADU.

SIZE	CODE IDENT. NO.	DWG NO.	ISSUE
B	82679	CL 460	
SCALE 2:1		SHEET OF	