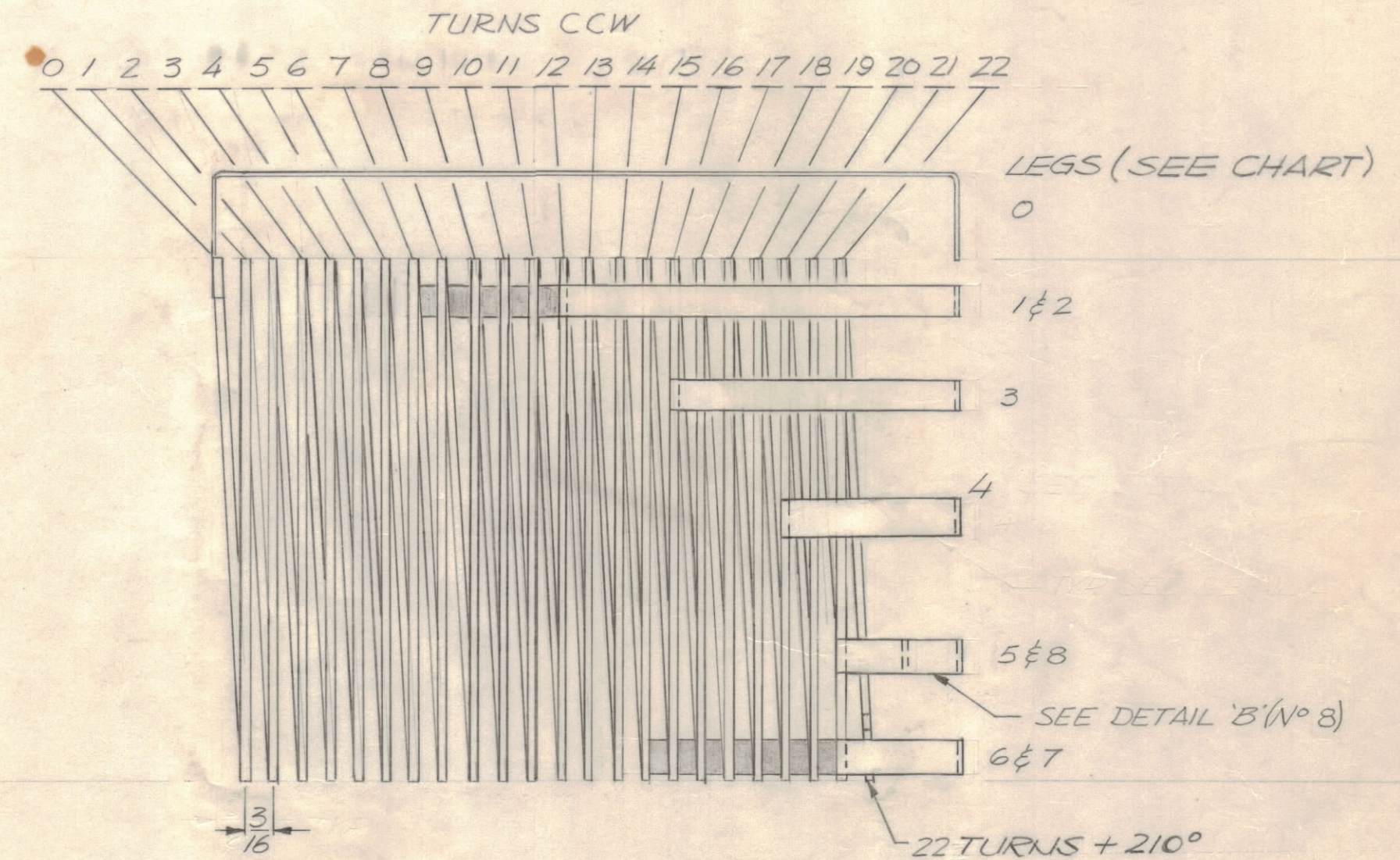
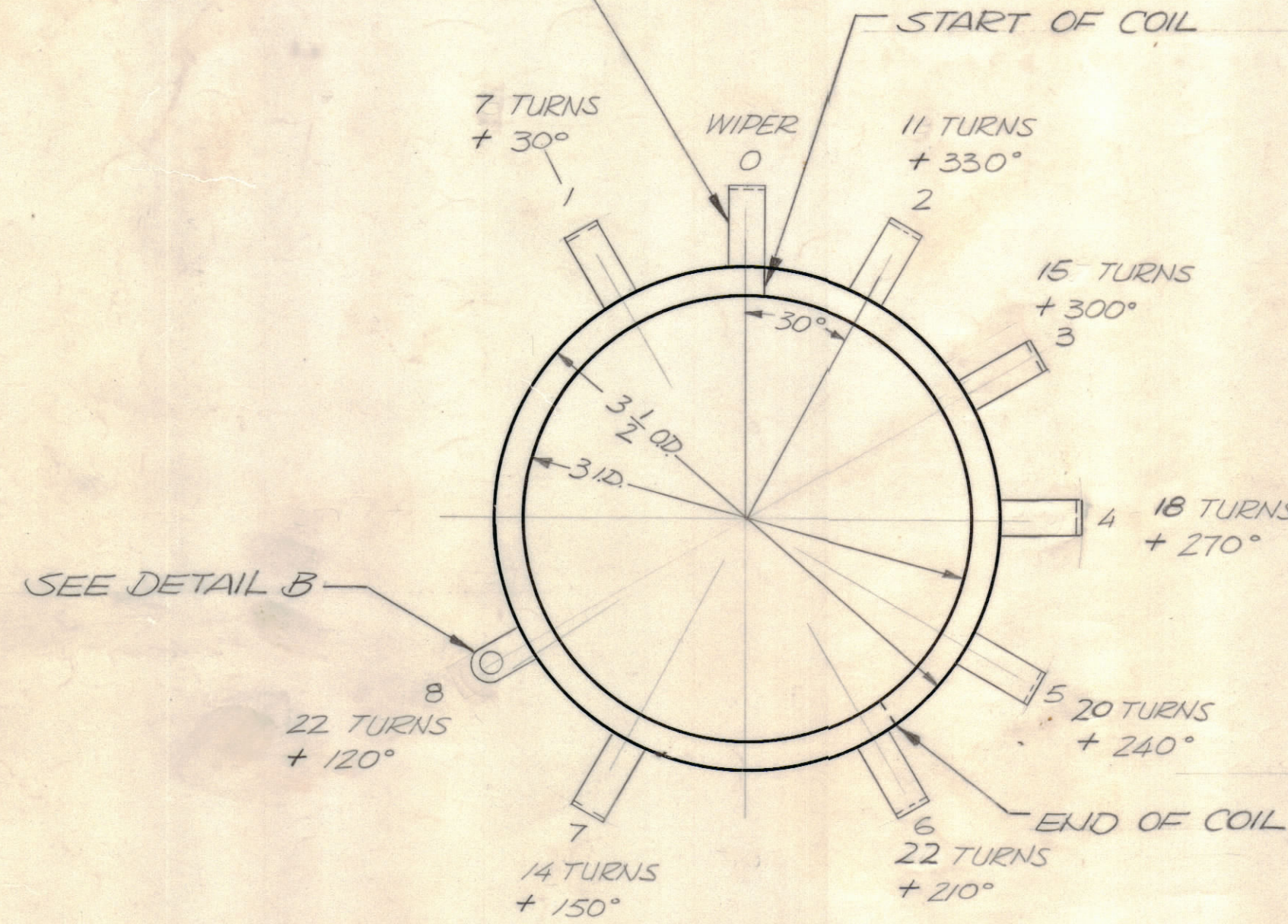


REVISIONS							
E.M.N.NO	DRAFT	CHKD	ZONE	LTR	DESCRIPTION	DATE	APPROVED
	GE			X	EXP RELEASE	9.2.69	
	GE			Ø	ORIGINAL RELEASE FOR PROD.	1/27/70	
	GE			A	CHG. WIPER 1&2 FROM 4 3/8 & 3/4 TO 3 7/8 & 2 7/8	3.27.70	MC
19862	HT			B	LEG LENGTH CHART. 23/4 WAS 2 7/8, 27/16 WAS 2 7/32	5/22/70	
20078	GE			C	LEG LENGTH CHT. 1 5/16 WAS 1 3/4, 15/16 WAS 3/4	11/10/70	P.E.A.
20568	GE			D	LEG LENGTH REVISED (ENTIRE CHT.)	3/21/72	EG

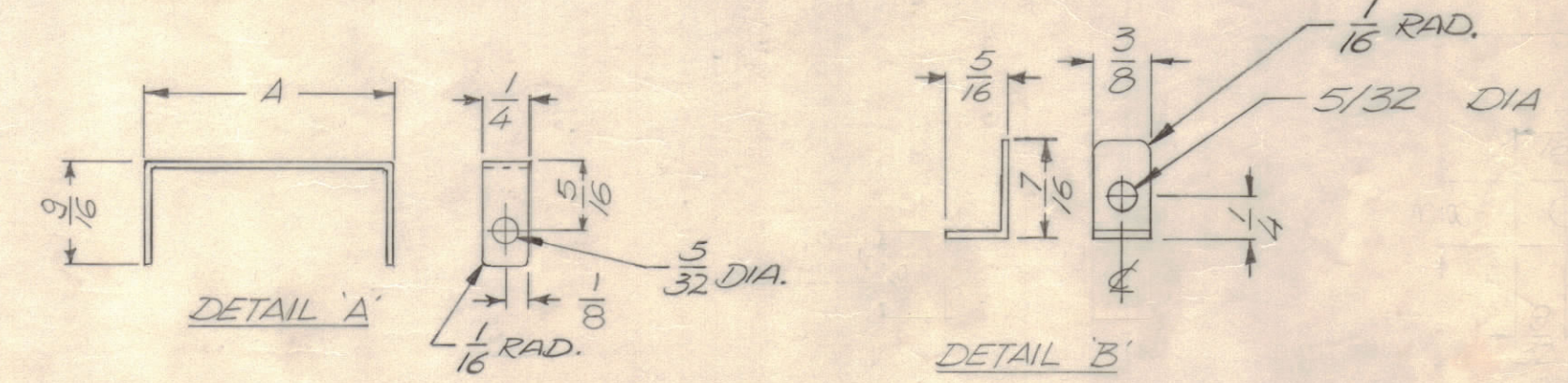
NOTE SHADED AREA DENOTES LEGS EXTENDING FROM OPPOSITE SIDE (1 & 7)

SEE DETAIL "A" FOR TAP LENGTHS 0" THRU "7"



NOTE: CUT OFF EXCESS COIL AFTER BRAZING OF LEGS TO COIL.

LEG	LENGTH 'A'
0 WIPER	4 15/16
1	3 5/8
2	2 1/16
3	2
4	1 7/16
5	1 1/16
6	3/4
7	2 1/4
8	SEE DETAIL B



MATERIAL THICKNESS FOR DETAILS .060

1	PALA-10K	AS146
QTY / UNIT	MODEL USED ON	ASS'Y NO.
APPLICATION		
CODE		

NOTICE TO PERSONS RECEIVING THIS DRAWING  
 THE TECHNICAL MATERIEL CORPORATION claims proprietary right in the material disclosed herein. This drawing is issued in confidence for engineering information only and may not be reproduced or used to manufacture anything shown herein without permission from THE TECHNICAL MATERIEL CORPORATION to the user. This drawing is loaned for mutual assistance and is subject to recall at any time.

UNLESS OTHERWISE SPECIFIED DIMENSIONS ARE IN INCHES AND INCLUDE CHEMICALLY APPLIED OR PLATED FINISHES

TOLERANCES ON  
 DECIMALS .X ± .05  
 .XX ± .01  
 .XXX ± .005  
 FRACTIONS ± 1/64  
 ANGLES ± 0° -30'

MATERIAL AS NOTED  
 FINISH S245

1	1	CL133-SR23CC	COIL RF	
QTY. REQ.	ITEM	PART NO.	DESCRIPTION	SYMBOL
F. BUDETTI LIST OF MATERIAL				
FINAL APPROVAL		DATE	THE TECHNICAL MATERIEL CORP. MAMARONECK, NEW YORK	
MECH. DES.		DATE	COIL, MAIN TANK	
ELECT. DES.		DATE		
CHECKED		DATE		
DRAWN		DATE	SIZE	CODE IDENT NO.
			C	82679
			DWG NO. CL446	
			SCALE	SHEET OF

CL 446 9777 D B