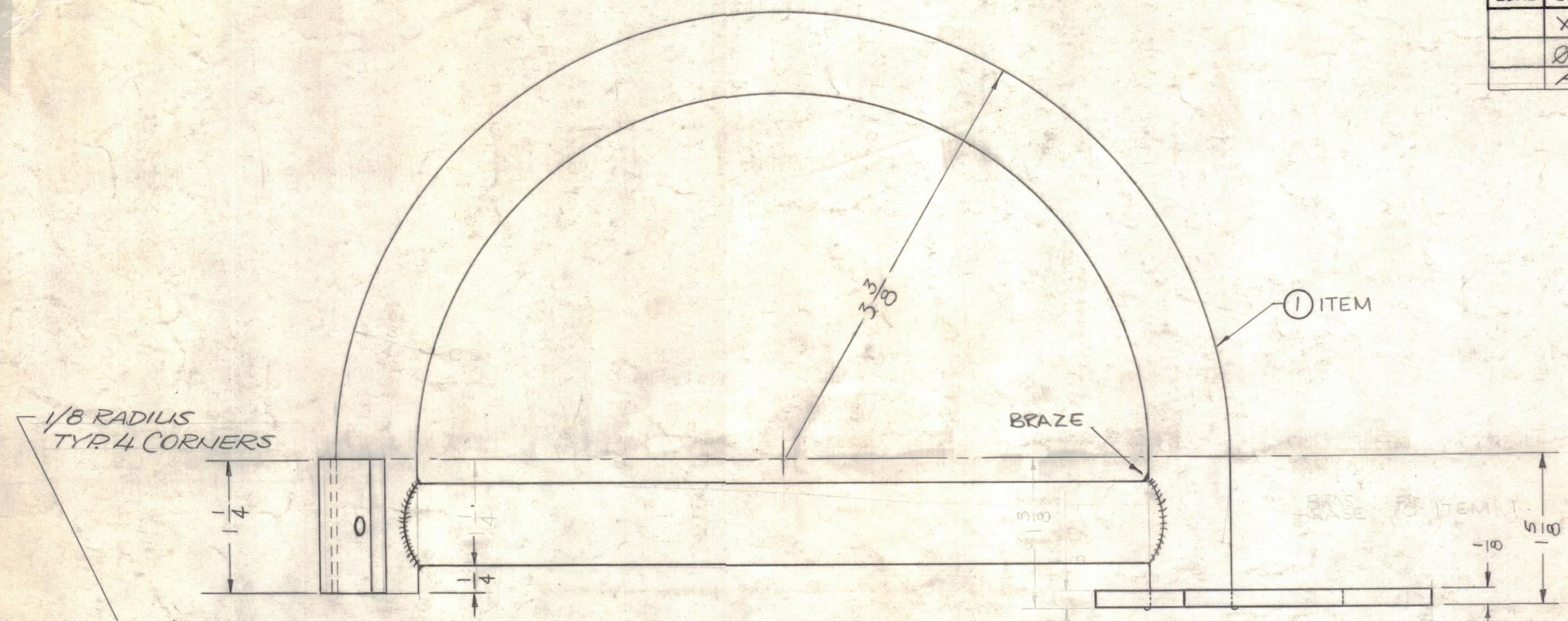
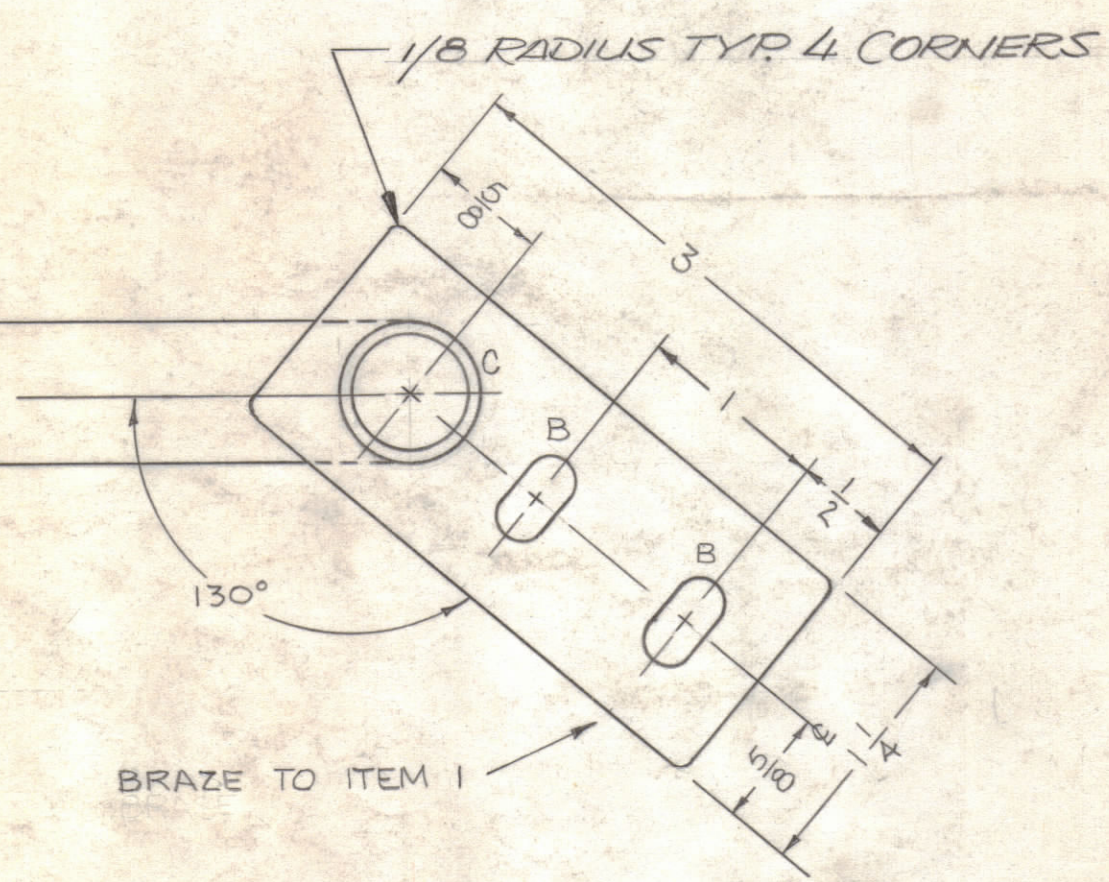
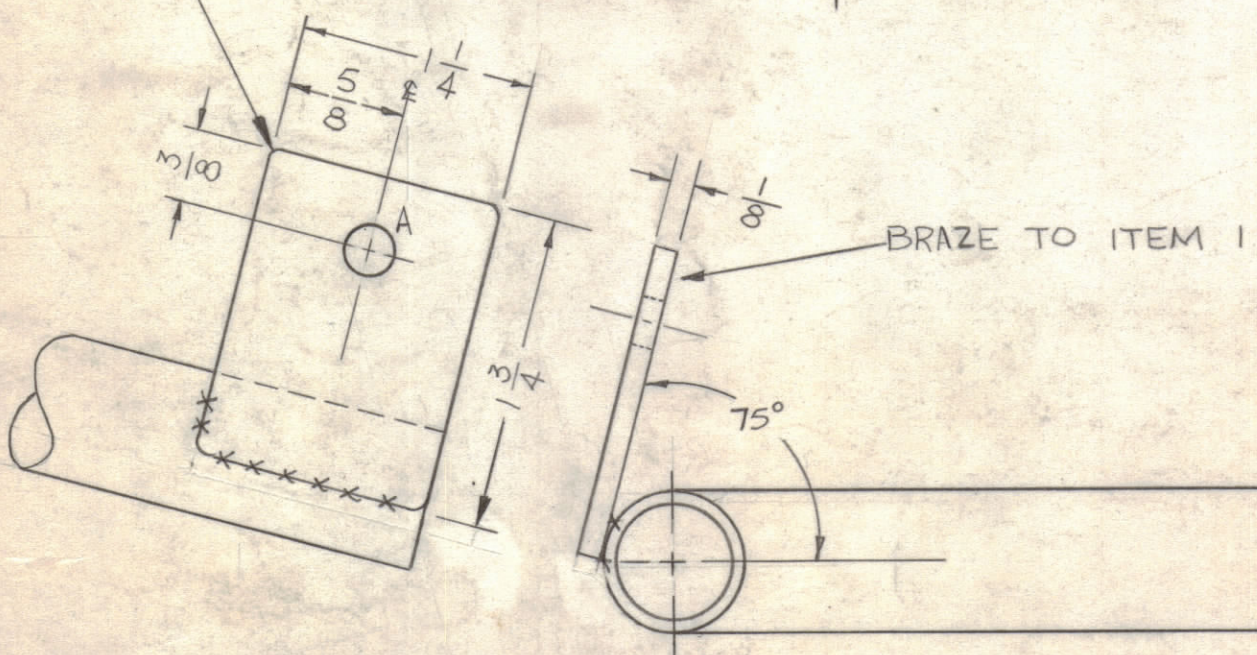


REVISIONS						
ZONE	LTR	DESCRIPTION	DATE	E.M.N.NO	DRAFT	CHKD APPD
	X	DRAWING REVISED	7-14-69		RE	
	Ø	ORIGINAL RELEASE FOR PRODUCTION	1/14/70		W	
	A	ADD. NOTE-REMOVE BURRS, SHP. EDG.	6-28-72	20768	GE	EP EP



HOLE	DESCRIPTION	REQ'D
A	1/4 DIA.	1
B	1/4 x 1/2 SLOT	2
C	3/16 DIA.	1



REMOVE ALL BURRS & SHARP EDGES

1	PALA-10K	AX 5084
QTY / UNIT	MODEL USED ON	ASS'Y NO.
APPLICATION		
CODE		

**NOTICE TO PERSONS RECEIVING THIS DRAWING**  
 THE TECHNICAL MATERIEL CORPORATION claims proprietary right in the material disclosed herein. This drawing is issued in confidence for engineering information only and may not be reproduced or used to manufacture anything shown hereon without permission from THE TECHNICAL MATERIEL CORPORATION to the user. This drawing is loaned for mutual assistance and is subject to recall at any time.

UNLESS OTHERWISE SPECIFIED DIMENSIONS ARE IN INCHES AND INCLUDE CHEMICALLY APPLIED OR PLATED FINISHES

TOLERANCES ON

DECIMALS	FRACTIONS
.X ± .05	± 1/64
.XX ± .01	ANGLES
.XXX ± .005	± 0° -30'

MATERIAL  
SOFT COPPER

FINISH  
S245 SILVER PLATE  
S423 SILVER KOTE

1	TU-100-12	TUBE, COPPER	
QTY. REQ.	ITEM	PART NO.	DESCRIPTION SYMBOL
F. BUDETTI LIST OF MATERIAL			
FINAL APPROVAL	DATE	THE TECHNICAL MATERIEL CORP. MAMARONECK, NEW YORK	
MECH. DES.	DATE	COIL, RF, HI FREQ	
ELECT. DES.	DATE		
CHECKED	DATE	SIZE CODE IDENT. NO. DWG NO. ISSUE	
DRAWN	DATE	C 82679	CL 442 A
		SCALE NO SCALE	SHEET OF