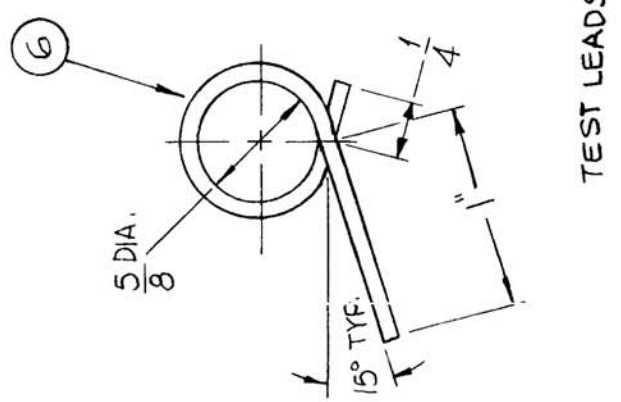
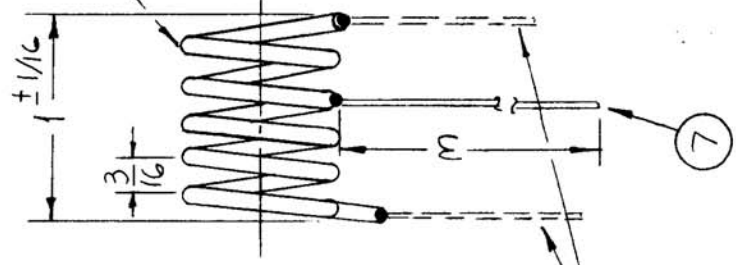
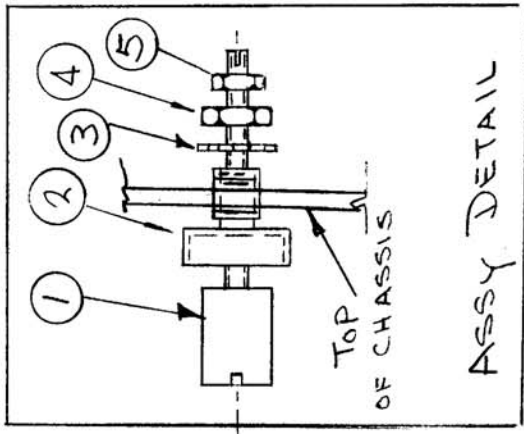


5 TURNS
CCW



TEST LEADS



ELEC. SPECIFICATIONS
(W/O ITEMS 1, 2, 3, 4, 5)
L - .30uh ± 10%
Q - GREATER THAN '175
TEST FREQ. - 25 MC

TEST COIL USING BOONTON
Q METER MOD. 160A OR EQUIV.
REMOVE TWO 1" TEST LEADS
(ITEM 7) AFTER TESTING.

CL414

REQ. PER UNIT	MODEL	USED ON
1	RFA-1B	ASSY. NO.
		DATE
		11-1-66

REQ. ITEM	PART NO.	DESCRIPTION	SYMBOL
X 8	BS100	SOLDER, TIN ALLOY	
X 7	WI100-7	WIRE, BUSS BAR	
X 6	WI100-2	WIRE, BUSS BAR	
1 5	NTH 0632BN4	NUT, PLAIN HEX	
1 4	NT102	NUT, HEX	
1 3	LWE25MRN	WASHER, LK, EXTERNAL	
1 2	SM142	BUSHING, COIL MTG.	
1 1	CI109-19	CORE, TUNING	
		F. BUDETTI	
AS SHOWN		THE TECHNICAL MATERIEL CORP.	
AS SHOWN		MAMARONECK. NEW YORK	
MATERIAL		COIL, RF	
TYPE & TEMPER	HEAT TREAT. SPEC.	CHECKED	FINAL APPROVAL
NONE		SG	Jhe 11/1/66
FINISH & SPEC. NO.	ELEC. DES. APP.	MECH. DES. APP.	
			CL414

SYM	DESCRIPTION	DATE	CH. NO.	DRAFTS	CHECKER	ENG. APP.
Ø	ORIGINAL RELEASE	11-1-66		WHW		Jhe
X1	REDRAWN, REVISED	11-1-66	X1			Jhe
X	EXP. RELEASE	10-24-66	X			
UNLESS OTHERWISE SPECIFIED		SCALE		CHECKER		ENG. APP.
DIMENSIONS ARE IN INCHES AND INCLUDE		1:1				
CHEMICALLY APPLIED OR PLATED FINISHES						
TOLERANCES		FRACTIONS		CODE		
.X ± .05		± 1/64		A		
.XX ± .01		ANGLES				
.XXX ± .005		± 0° 30'				