

MAT'L - (COIL) .054 COPPER
 NOTE - SILVER SOLDER ALL PARTS AS SHOWN

NOTES

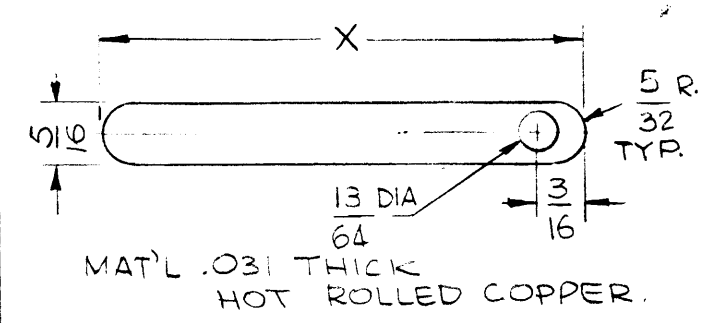
Q'TY./UNIT	TLAA-2.5K	AS128
SCALE	CODE	ASS'Y. NO.
1:1	A	

THE CONTENTS OF THIS DRAWING ARE THE EXCLUSIVE PROPERTY OF THE TECHNICAL MATERIEL CORP. ITS UNAUTHORIZED USE OR REPRODUCTION IN WHOLE OR IN PART IS STRICTLY FORBIDDEN.

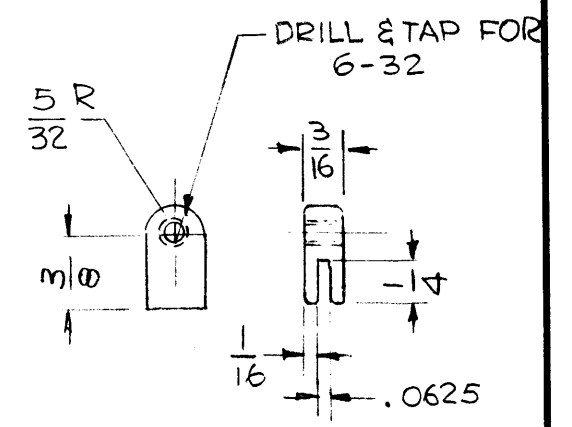
CL402

REVISIONS

SYM	DESCRIPTION	DATE	E.M.N. NO.	DRAFT	CHKD	APPD
X	EXPERIMENTAL RELEASE	7.15.66		SRG		<i>SRG</i>
X1	STRAP #7 WAS 2-1/4 LONG	8.22.66		<i>SRG</i>		<i>SRG</i>
Ø	ORIGINAL RELEASE FOR PRODUCTION	11.11.66	VAT	WFO		<i>WFO</i>



STRAP	X	DEGREE FROM 0	FROM	TO
1	2-3/8	50°	1	1
2	1-7/8	30°	2	2
3	1-11/16	13°	3	3
4	1-5/8	5°	4	4
5	1-11/16	13°	5	5
6	1-7/8	30°	6	6
7	1-3/4	50°	7	7



ROUND ALL EDGES & CORNERS
 MATERIAL - HALF HARD BRASS

1	1	CL133-3-R-15-CW	COIL, RF	
REQ'D.	ITEM	PART NUMBER	DESCRIPTION	SYMBOL
F. BUDETTI LIST OF MATERIAL				
MATERIAL SEE DWG			THE TECHNICAL MATERIEL CORP. MAMARONECK, NEW YORK	
FINISH S245 SILVER PLATE S423 SILVER KOTE			TITLE COIL, RF "L" SECTION	
UNLESS OTHERWISE SPECIFIED DIMENSIONS ARE IN INCHES AND INCLUDE CHEMICALLY APPLIED OR PLATED FINISHES				
DRAWN SRG		DATE 3-1-65	FINAL APPROVAL <i>[Signature]</i>	
CHECKED		DATE	DATE 11-9-66	
ELECT. DES. <i>[Signature]</i>		DATE	SHEET CL402	
MECH. DES. <i>[Signature]</i>		DATE	REV. LTR.	
MIL <i>[Signature]</i>		11/11/66	SHEET NO. 44 H	