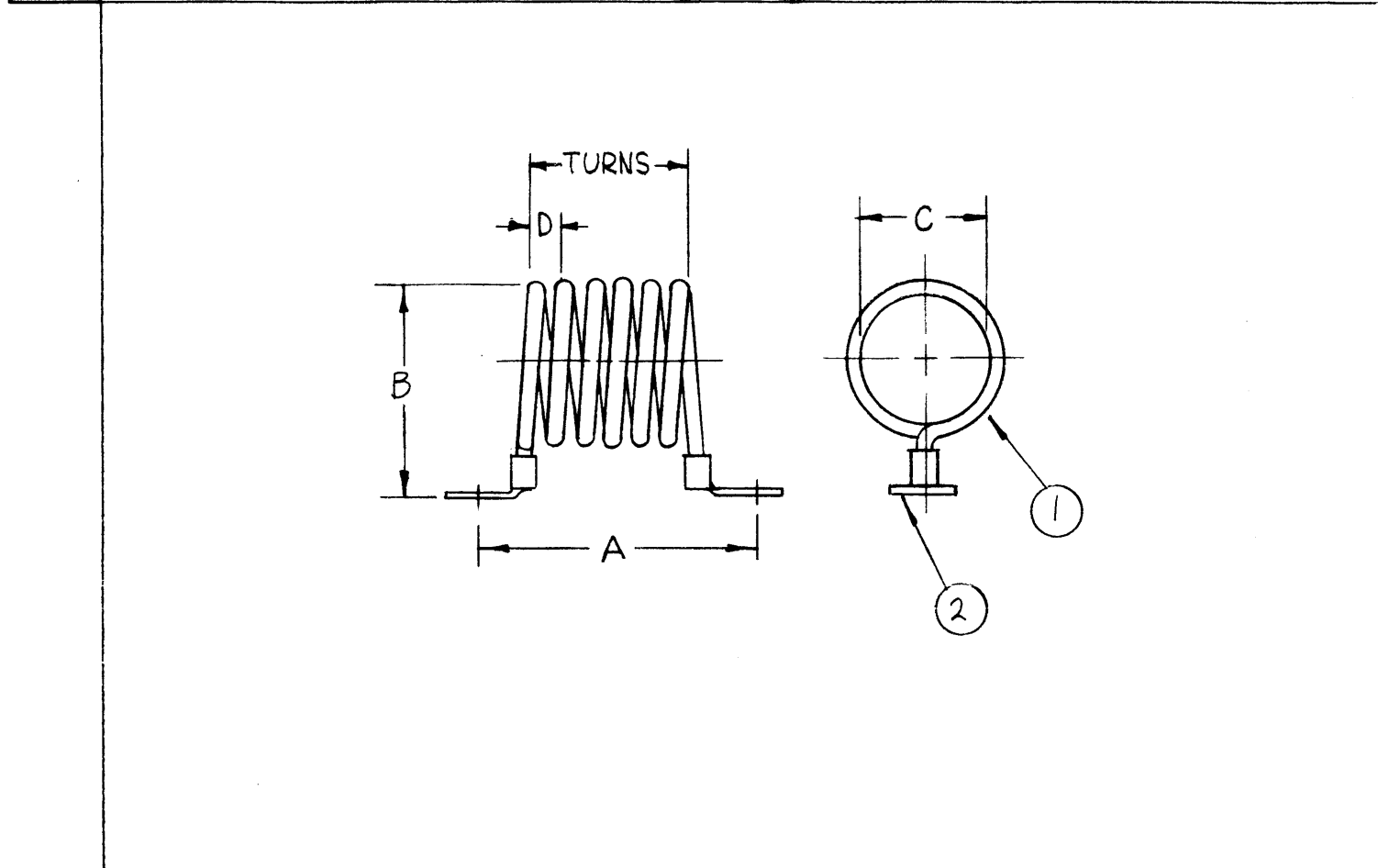


TMC P/N	TURNS	A	B	C	D
CL401-1	3	1-1/4	1-3/16	3/4	5/32
CL401-2	5	1-5/8	1-3/16	3/4	
CL401-3	6	1-3/4	1-3/16	3/4	
CL401-4	14	3 1/4	1-7/8	1-1/2	
CL401-5	15	3-1/2			
CL401-6	11	2-5/8			
CL401-7	12	2-3/4			
CL401-8	8	2-1/2			
CL401-9	9	2-5/8	1-7/8	1-1/2	
CL401-10	13	2-3/4	1-5/16	3/4	
CL401-11	14	3			
CL401-12	11	2-1/2			
CL401-13	12	2-5/8			
CL401-14	6	1-3/4			
CL401-15	7	1-7/8	1-5/16	3/4	5/32
CL401-16	16	3-3/4	1-7/8	1-1/2	5/32
CL401-17	10	3	1-7/8	1-1/2	5/32
CL401-18	8	2	1-5/16	3/4	5/32
CL401-19	7-1/2	2-1/2	1-7/8	1-1/2	5/32
CL401-20	1	1	1-5/16	3/4	5/32

SYM	DESCRIPTION	DATE	E.M.N. NO.	DRAFT	CHKD	APPD
X1	REDRAWN & REVISED FROM 1 SIZE	8-1-66	X1	M/S		
X2	ITEM 3 WAS BS100	5-24-67	X2	M/S	M/S	
X	OK TO RELEASE FOR PRODUCTION	5-25-67	X			File
A	CL401-16 thru CL401-20 ADDED	5/18/67	20337	CU		



REQ'D.	ITEM	PART NUMBER	DESCRIPTION	SYMBOL
	3	BS101	BRAZING ALLOY, SILVER	
	2	TE141-1	TERM. LUG #6	
	1	WL100-1	WIRE, ELECT, BUSS	

MATERIAL		THE TECHNICAL MATERIEL CORP. MAMARONECK, NEW YORK	
SEE DWG		TITLE COIL, RF	
FINISH S245 SILVER PLATE S423 SILVER KOTE		DRAWN DATE 8-1-66 CHECKED DATE 5-24-67 ELECT. DES. DATE MECH. DES. DATE 5/24/67	
UNLESS OTHERWISE SPECIFIED DIMENSIONS ARE IN INCHES AND INCLUDE CHEMICALLY APPLIED OR PLATED FINISHES		FINAL APPROVAL DATE 5/25/67 CL401 A	
DECIMALS .X ± .05 .XX ± .01 .XXX ± .005		TOLERANCES ± 1/64 ANGLES ± 0° 30'	
Q'TY./UNIT SCALE		ASS'Y. NO. STANDARD	
MODEL USED ON CODE A		SHEET	

NOTES

THE CONTENTS OF THIS DRAWING ARE THE EXCLUSIVE PROPERTY OF THE TECHNICAL MATERIEL CORP. ITS UNAUTHORIZED USE OR REPRODUCTION IN WHOLE OR IN PART IS STRICTLY FORBIDDEN.