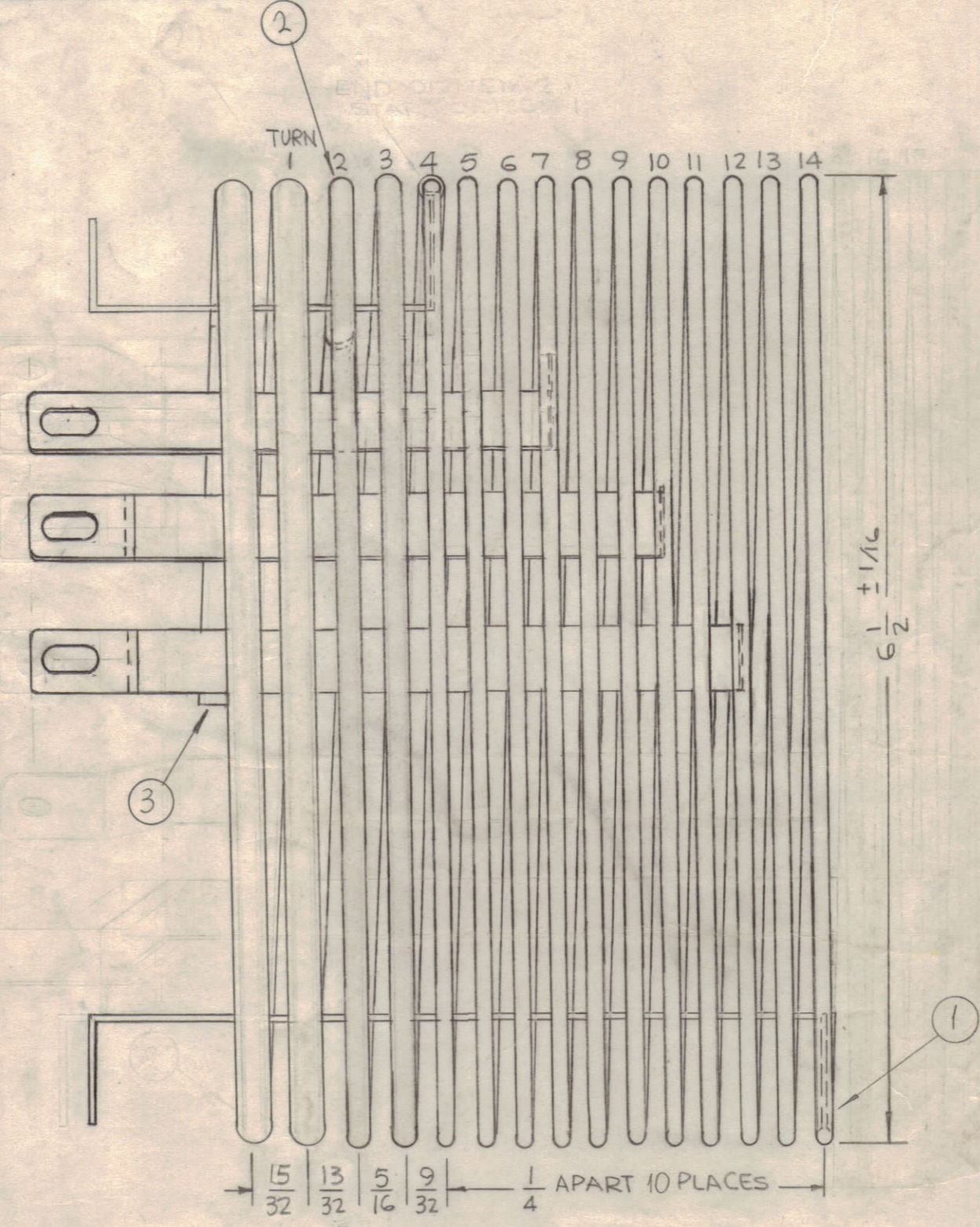
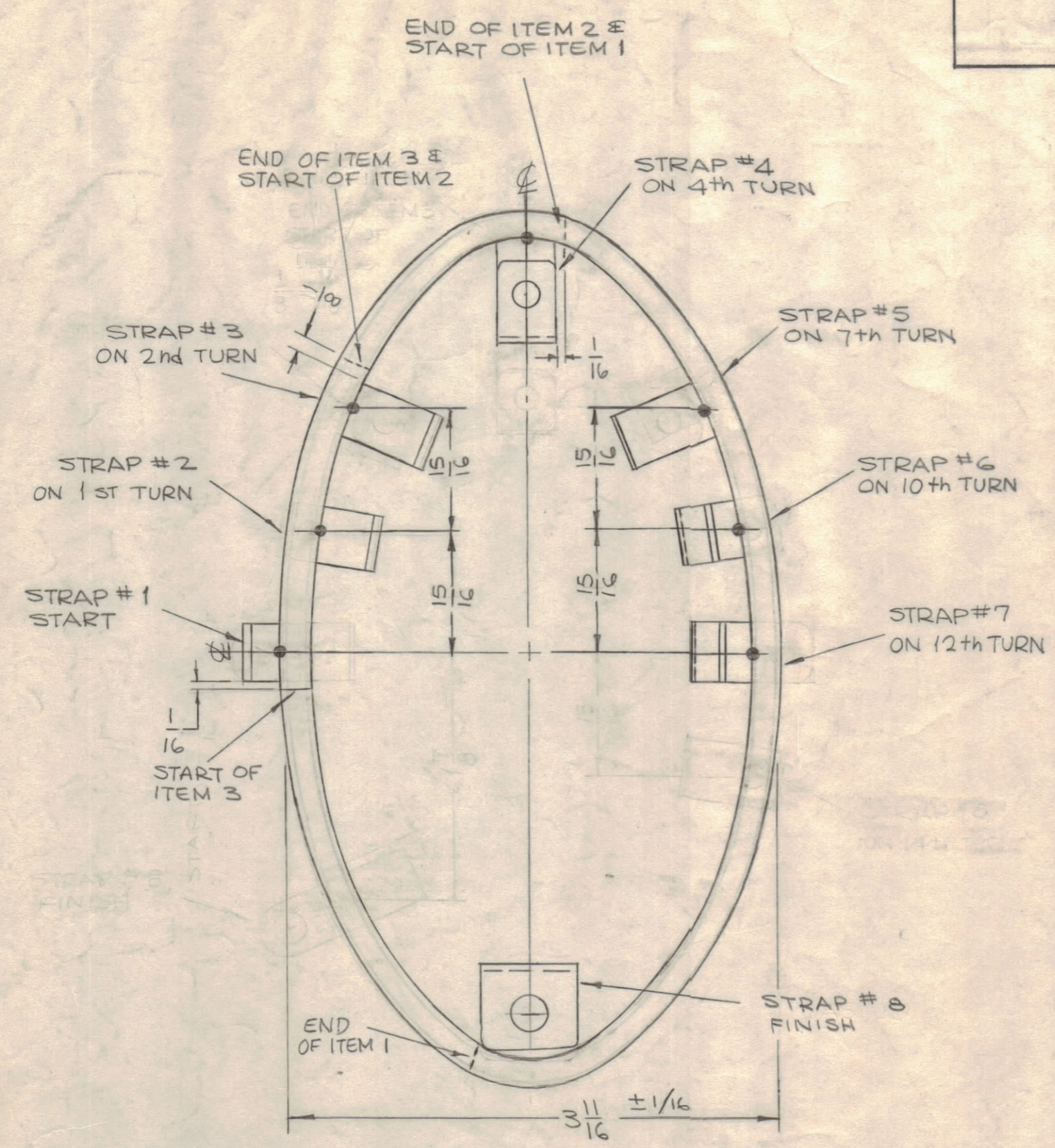
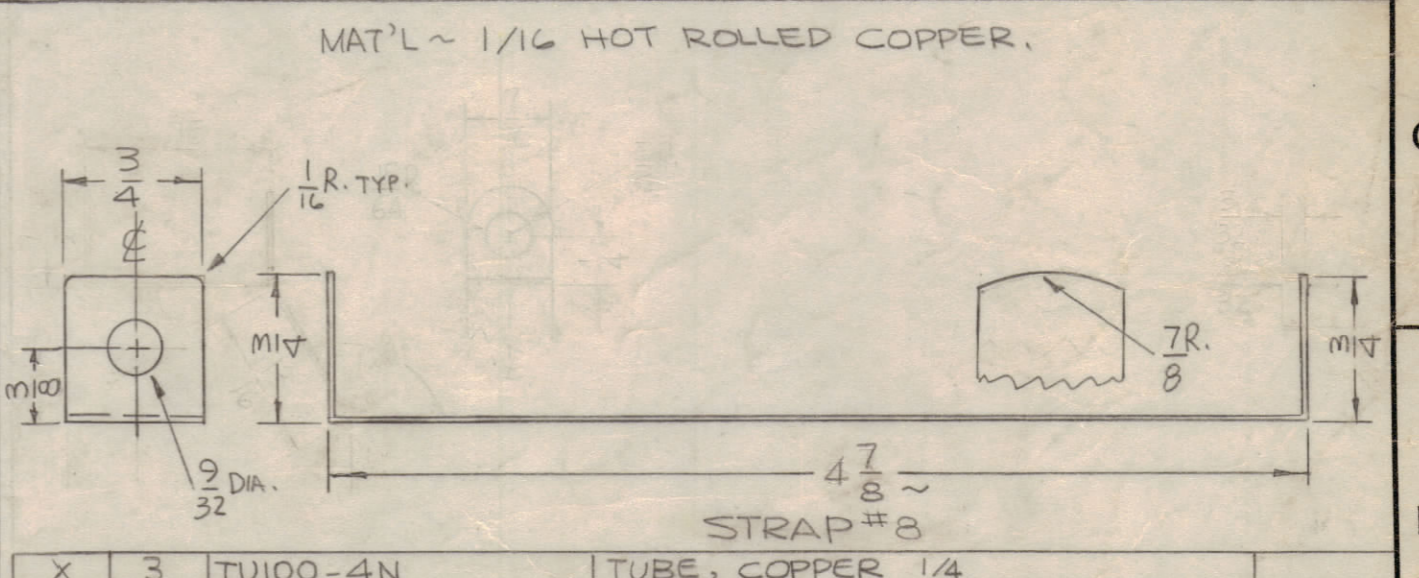
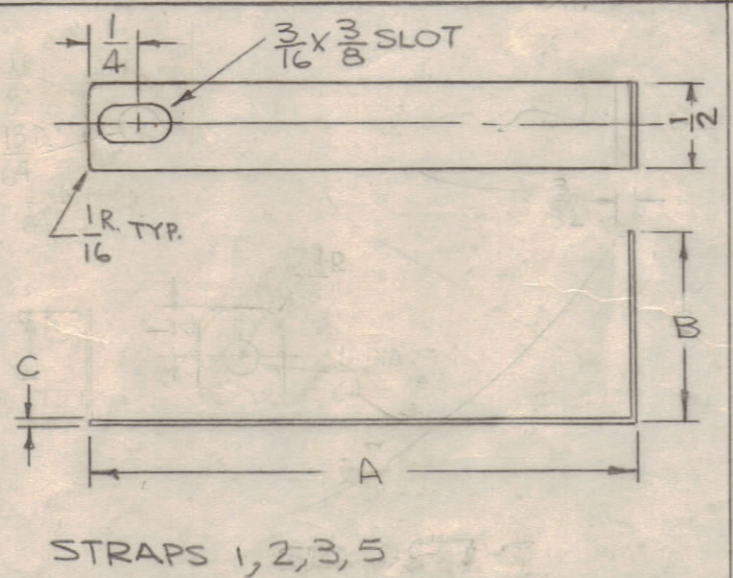
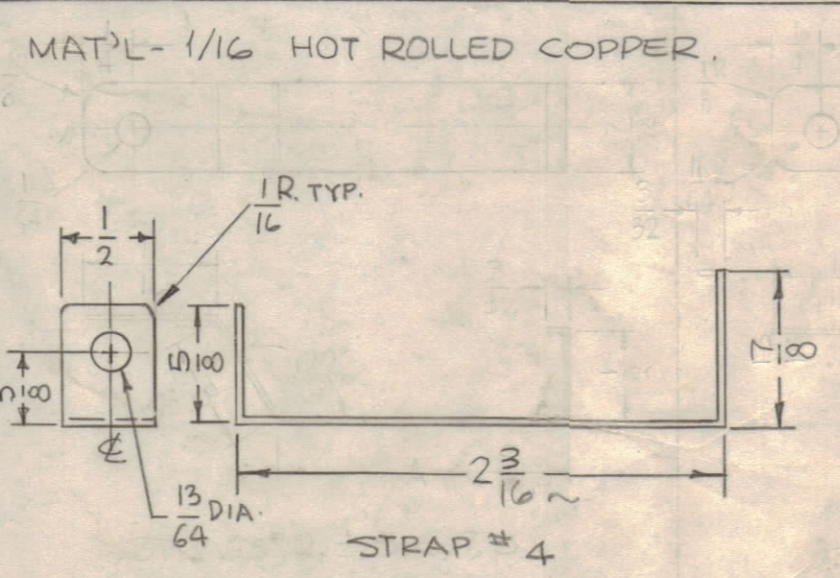


REVISIONS						
ZONE	SYM	DESCRIPTION	DATE	E.M.N. NO.	DRAFT	CHKD
X		EXPERIMENTAL RELEASE	6-8-66	X		
X1		STRAP 5 WAS ON 5th TURN	7-1-66	X1		
X2		STRAPS & COIL REVISED	8-23-66	X2		
X3		STRAPS 3 & 7 REVISED, STRAP 4, 2 3/8 WAS 2 9/16	8-24-66	X3		
X4		1/4 TUBING ADDED STRAPS REVISED	9-13-66	X4		
Ø		ORIGINAL RELEASE FOR PRODUCTION	11-15-66		CV	
A		ON STRAP CHART ADD "D" COL.; ADD DETAIL OF STRAPS G & 7 & GEN'L UPDATED PICT.	3/28/67	18043	HLL	



STRAP	A	B	C	D
1	1-1/32	5/16	3/32	-
2	1-15/32	7/16	3/32	-
3	1-27/32	3/4	3/32	-
4	SEE DETAIL			
5	3-7/16	3/4	1/16	-
6	4-1/8	3/4	1/16	3-1/2
7	4-5/8	1/2	1/16	4
8	SEE DETAIL			



MAT'L ALL STRAPS HOT ROLLED COPPER.

- 1~ SILVER SOLDER STRAPS PERPENDICULAR TO COIL.
- 2~ REMOVE ALL SHARP EDGES.
- 3~ USE JG III TO FORM COIL.
- ~ SILVER SOLDER STRAPS AT THIS POINT.

REQ'D.	ITEM	PART NUMBER	DESCRIPTION	SYMBOL
X	3	TU100-4N	TUBE, COPPER 1/4	
X	2	TU100-3N	TUBE, COPPER 3/16	
X	1	TU100-2N	TUBE, COPPER 1/8	

F. BUDETTI LIST OF MATERIAL

MATERIAL SEE DRAWING

FINISH S245 SILVER PLATE S423 SILVER KOTE

TITLE THE TECHNICAL MATERIEL CORP. MAMARONECK, NEW YORK

COIL, BANDSWITCH

UNLESS OTHERWISE SPECIFIED DIMENSIONS ARE IN INCHES AND INCLUDE CHEMICALLY APPLIED OR PLATED FINISHES

DECIMALS .X ± .05 .XX ± .01 .XXX ± .005

FRACTIONS ± 1/64 ANGLES ± 0° 30'

TOLERANCES

DRAWN [Signature] DATE 12/27/65

CHECKED [Signature] DATE

ELECT. DES. [Signature] DATE 11-9-66

MECH. DES. [Signature] DATE 11/10/66

FINAL APPROVAL [Signature] DATE 11/10/66

CL399

SHEET

REV. LTR.

NOTES

THE CONTENTS OF THIS DRAWING ARE THE EXCLUSIVE PROPERTY OF THE TECHNICAL MATERIEL CORP. ITS UNAUTHORIZED USE OR REPRODUCTION IN WHOLE OR IN PART IS STRICTLY FORBIDDEN.

CL399 A