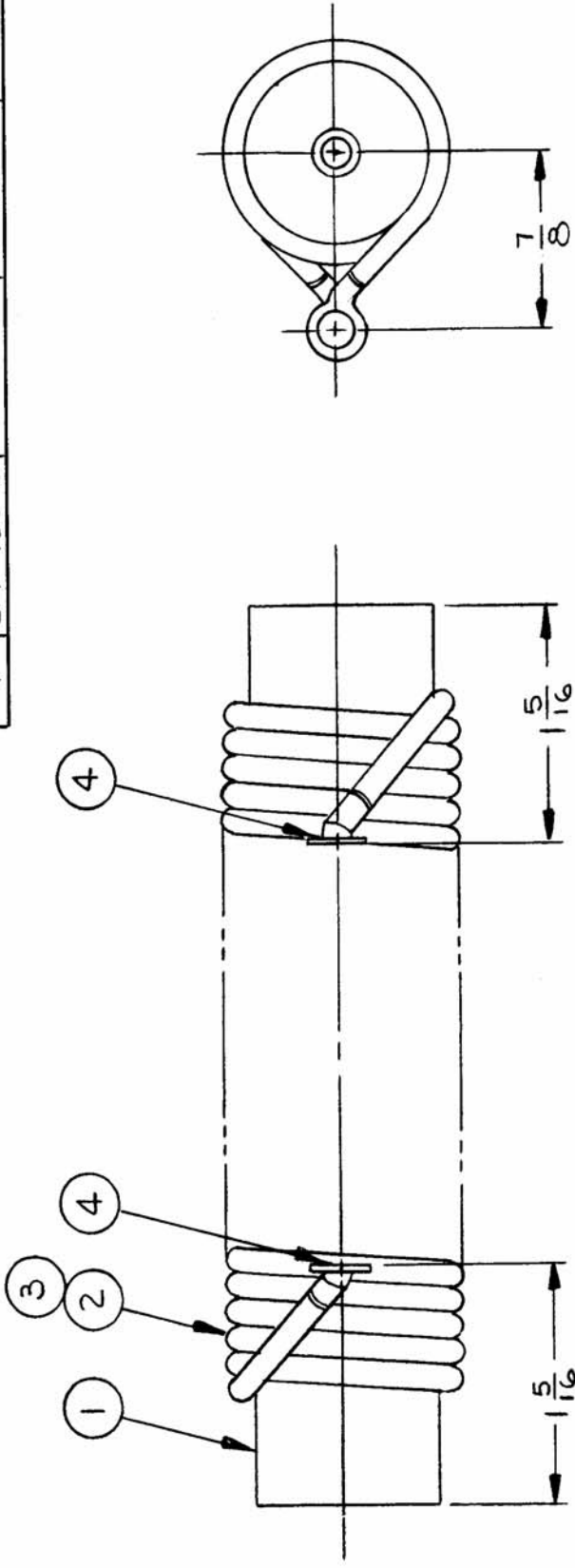


CL390 A

REQ. PER UNIT: 1
 MODEL: LPF-150-3
 USED ON: ASSY. NO. 3-23-66 DATE: 3-23-66



SPECIFICATIONS

L= 4.96 ± 0.05 μh
 Q= NOT REQ.
 TURNS= 26 1/2

NOTE: CRIMP AND SOLDER ALL LUGS.

REQ. ITEM	PART NO.	DESCRIPTION	SYMBOL
X 5	BS100	SOLDER, TIN ALLOY	
X 4	TE141-1	TERMINAL LUG	
X 3	PX370-11-7	INSULATION, SLVG-TEFLON	
X 2	WL100-2	WIRE, BUSS	
X 1	NS3W04-40	INSULATOR, STANDOFF	
		BAKER	
		THE TECHNICAL MATERIEL CORP. MAMARONECK, NEW YORK	
		COIL, FILTER, 2-3 MC	
STOCK SIZE			
MATERIAL			
TYPE & TEMPER			
HEAT TREAT. SPEC.			
FINISH & SPEC. NO.			

SYM	DESCRIPTION	DATE	CH. NO.	DRAFTS	CHECKER	ENG. APP.
A	IT 3 WAS PX370-12-7	11/19/71	20462	Q		
Ø	ORIGINAL RELEASE FOR PRODUCTION	3/25/66		C.V	C.J	C.J
UNLESS OTHERWISE SPECIFIED DIMENSIONS ARE IN INCHES AND INCLUDE CHEMICALLY APPLIED OR PLATED FINISHES		SCALE				
TOLERANCES		FRACTIONS		CODE		
X ± .05		± 1/64				
XX ± .01		ANGLES				
.XXX ± .005		± 0° 30'				