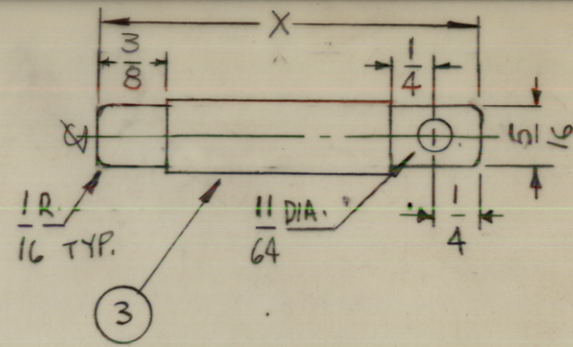


STRAP	X
1	8"
2	6"
3	7"
4	4"
5	6"
6	2"

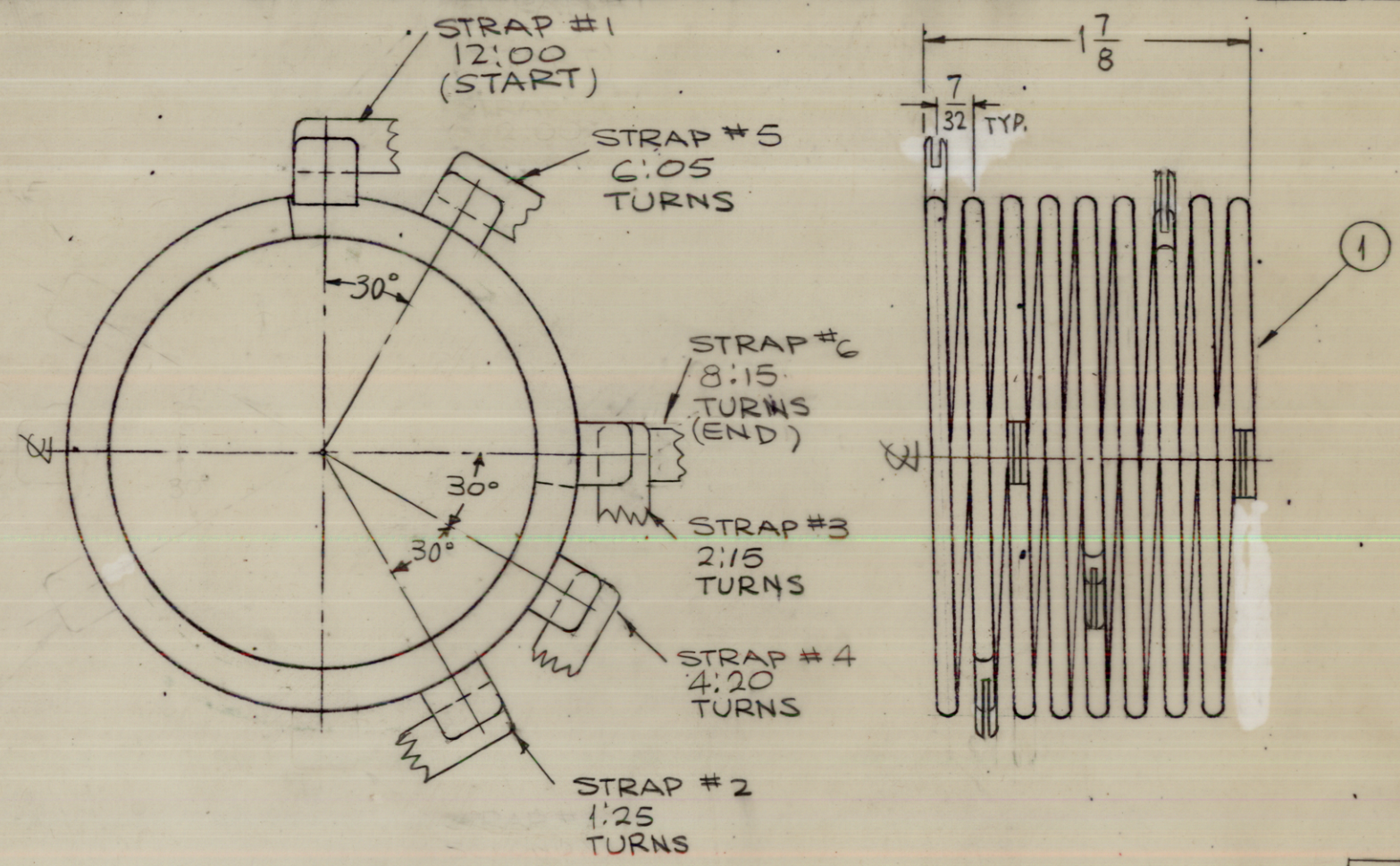


MAT'L ~ .031 THICK
HOT ROLLED
COPPER

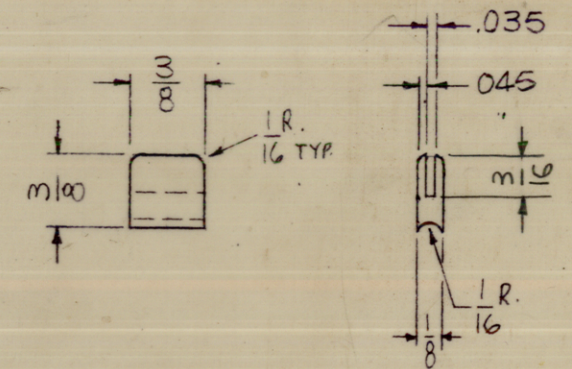
CL384

STRAP-DETAIL

REVISIONS						
SYM	DESCRIPTION	DATE	E.M.N. NO.	DRAFT	CHKD	APPD
X1	S423 ADDED TO FINISH	7-1-65	X1	<i>[Signature]</i>	<i>[Signature]</i>	
X2	STRAPS ADDED	8-11-65	X2	<i>[Signature]</i>		
X3	STRAP 2 WAS 5", 3 WAS 5" 5 WAS 5"	8-16-65	X3	<i>[Signature]</i>		
Ø	ORIGINAL RELEASE FOR PRODUCTION	3-3-66		<i>[Signature]</i>	<i>[Signature]</i>	<i>[Signature]</i>



MAT'L ~ HALF HARD BRASS



STRAP HOLDER-DETAIL
(6 REQ.)

NOTE:
- REMOVE ALL SHARP EDGES.
- SILVER SOLDER STRAP HOLDERS & STRAPS TO COIL.
* CUT AS REQ.

REQ'D.	ITEM	PART NUMBER	DESCRIPTION	SYMBOL
X	3	PX 370-2-7*		
X	2	BS101-2	BRAZE, ALLOY, SILVER	
1	1	CL133-2R8.750CW	COIL, RF	

F. BUDETTI		LIST OF MATERIAL			
MATERIAL		THE TECHNICAL MATERIEL CORP. MAMARONECK, NEW YORK			
FINISH S245 SILVER PLATE S423 IRIDITE 18-P SILVER KOTE		TITLE COIL, RF			
UNLESS OTHERWISE SPECIFIED DIMENSIONS ARE IN INCHES AND INCLUDE CHEMICALLY APPLIED OR PLATED FINISHES		DRAWN <i>[Signature]</i>	DATE 6-15-65	FINAL APPROVAL <i>[Signature]</i>	
DECIMALS .X ± .05 .XX ± .01 .XXX ± .005		CHECKED <i>[Signature]</i>	DATE 3-2-66	DATE 3/3/66	
FRACTIONS ± 1/64 ANGLES ± 0° 30'		ELECT. DES. <i>[Signature]</i>	DATE 3/3/66	SHEET CL384	
TOLERANCES		MECH. DES. <i>[Signature]</i>	DATE 3/3/66	REV. LTR. Ø	
		M/L			

1	TST-10K	
Q'TY./UNIT	MODEL USED ON	ASS'Y. NO.
SCALE 1:1	CODE A	

THE CONTENTS OF THIS DRAWING ARE THE EXCLUSIVE PROPERTY OF THE TECHNICAL MATERIEL CORP. ITS UNAUTHORIZED USE OR REPRODUCTION IN WHOLE OR IN PART IS STRICTLY FORBIDDEN.

NOTES