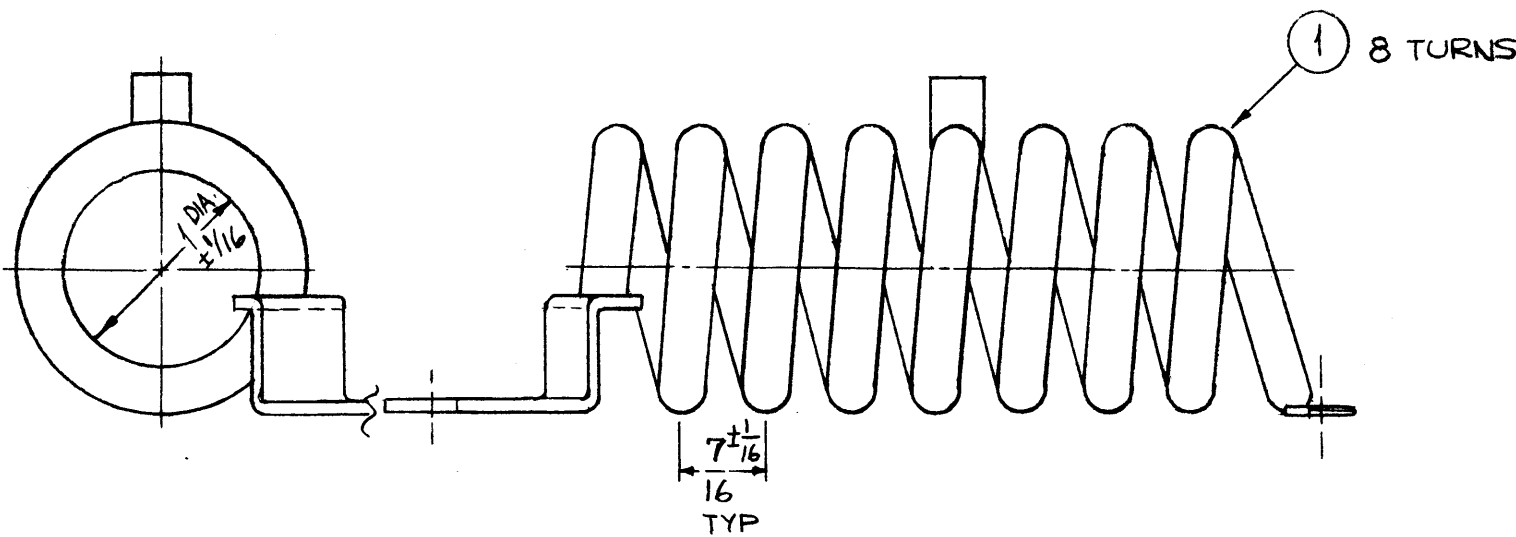
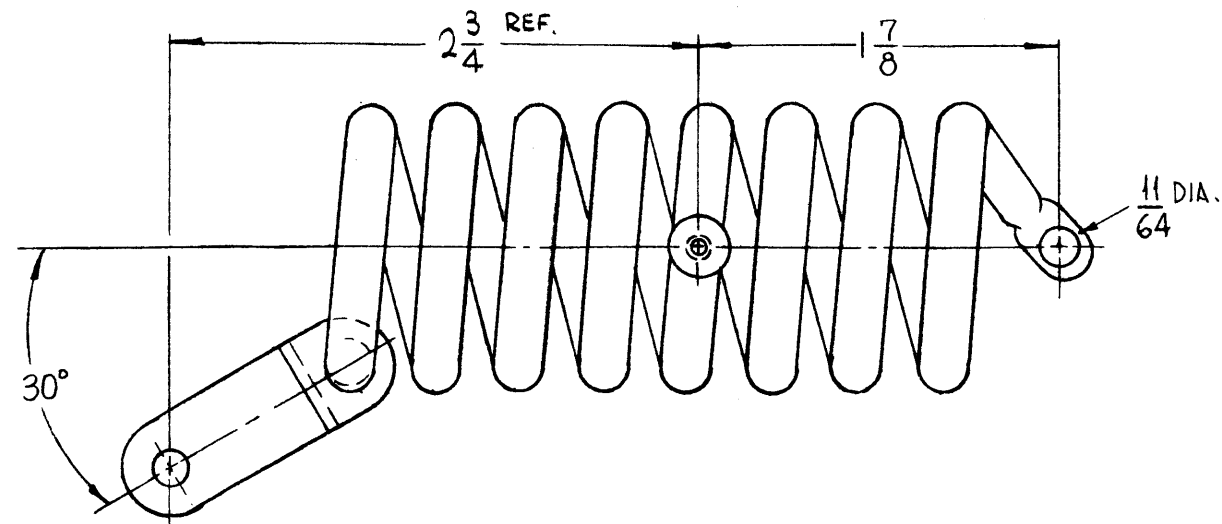


A
CL356

REVISIONS

SYM	DESCRIPTION	DATE	E.M.N. NO.	DRAFT	CHKD	APPD
X	EXPERIMENTAL RELEASE	2-4-65	X	SRG		
X1	ITEM 2 ADDED	8-26-65	X1	SRG		
Ø	ORIGINAL RELEASE FOR PRODUCTION	4-14-66	Ø	SRG		
A	ADDED ± 1/16 TO 1 DIA. & 7/16 TYP	8/26/66	16812	CED		



NOTE:
SILVER SOLDER ALL PARTS TOGETHER, AS SHOWN.

NOTES

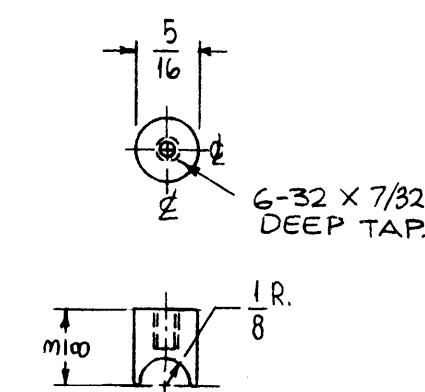
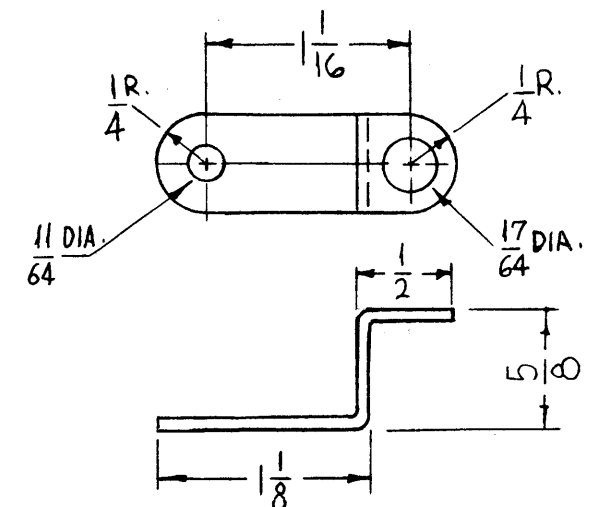
1	RFTA-1	
Q'TY./UNIT	MODEL USED ON	ASS'Y. NO.
SCALE 1:1	CODE A	

THE CONTENTS OF THIS DRAWING ARE THE EXCLUSIVE PROPERTY OF THE TECHNICAL MATERIEL CORP. ITS UNAUTHORIZED USE OR REPRODUCTION IN WHOLE OR IN PART IS STRICTLY FORBIDDEN.

REQ'D.	ITEM	PART NUMBER	DESCRIPTION	SYMBOL
X	2	BS101	BRAZING ALLOY, SILVER	
X	1	TU100-4N	TUBBING, COPPER	

F. BUDETTI LIST OF MATERIAL

MATERIAL SEE DWG	THE TECHNICAL MATERIEL CORP. MAMARONECK, NEW YORK		
FINISH S245 SILVER PLATE S423 SILVER KOTE	TITLE COIL, RF		
UNLESS OTHERWISE SPECIFIED DIMENSIONS ARE IN INCHES AND INCLUDE CHEMICALLY APPLIED OR PLATED FINISHES	DRAWN SRG	DATE 4-14-66	FINAL APPROVAL [Signature]
DECIMALS .X ± .05 .XX ± .01 .XXX ± .005	CHECKED [Signature]	DATE	DATE 4-14-66
TOLERANCES	ELECT. DES. [Signature]	DATE	CL356
FRACTIONS ± 1/64 ANGLES ± 0° 30'	MECH. DES. [Signature]	DATE	A
		SHEET	REV. LTR.



MATERIAL ~ 1/16 COPPER.

MATERIAL ~ BRASS