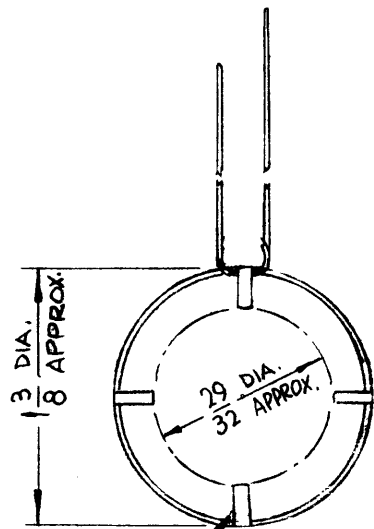
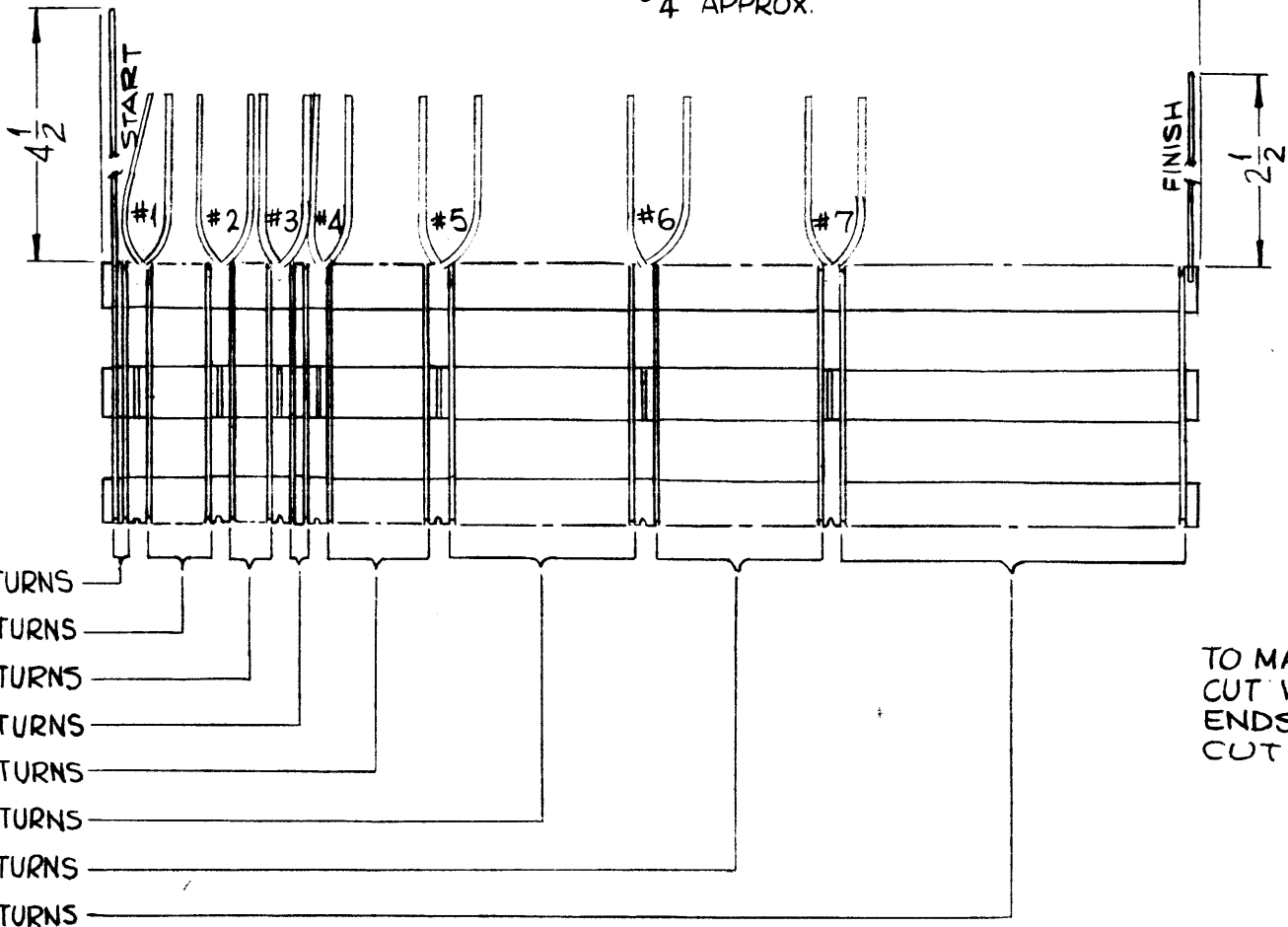


1/16 MIN.

5 3/4 OVERALL APPROX.



TO MAKE TAPS - CUT WIRE HERE AND BEND ENDS BACK, DO NOT CUT ENDS.

CL346

REVISIONS						
SYM	DESCRIPTION	DATE	E.M.N. NO.	DRAFT	CHKD	APPD
X	EXPERIMENTAL RELEASE	10-20-64	X	SRG		
Ø	ORIGINAL RELEASE FOR PRODUCTION	10-28-64	Ø	RF		
A	TAP POS REVISED	1-31-67	17747	SRG	RF	

SPECIFICATIONS

WINDING DATA:
 TYPE: SINGLE LAYER 16 TURNS/INCH
 NO. OF TURNS: 83
 INDUCTANCE - SEE CHART
 D.C. RESISTANCE - APPROXIMATELY 0.2Ω
 CURRENT RATING - 2 AMPS AT 30MC, 3 AMPS AT 2 MC
 MATERIAL - COPPER #20 AWG
 FINISH - BRIGHT TIN OR SILVER PLATE
 COIL FORM - FOUR POLYSTYRENE BARS EVENLY SPACED
 CORE - NONE
 CASE DATA - NONE
 TERMINAL DATA - SEE PICTORIAL

	#1	#2	#3	#4	#5	#6	#7	#8
L±5%	.47μ	2.74μ	4.72μ	5.82μ	9.86μ	19.4μ	28.3μ	48.5μ
Q	136	186	217	228	175	210	230	256
F	25MC	7.9MC	7.9MC	7.9MC	2.5MC	2.5MC	2.5MC	2.5MC

MEASUREMENTS TAKEN ON BOONTON Q METER, MODEL 260A. START IS COMMON TERMINAL TO ALL READINGS. COIL SHOULD BE 1 1/2" ABOVE METER TERMINALS.

PURCH. NOTE: MANUFACTURERS PART NUMBER IS THE BASIC COIL (WITHOUT TAPS) AND IS TO BE MODIFIED AS SHOWN.

REQ'D.	ITEM	PART NUMBER	DESCRIPTION	SYMBOL
LIST OF MATERIAL				
MATERIAL		THE TECHNICAL MATERIEL CORP.		
SEE SPECS		MAMARONECK, NEW YORK		
FINISH		TITLE		
SEE SPECS		COIL, RF, FIXED		
UNLESS OTHERWISE SPECIFIED		DRAWN	DATE	FINAL APPROVAL
DIMENSIONS ARE IN INCHES AND INCLUDE		SRG		
CHEMICALLY APPLIED OR PLATED FINISHES		CHECKED	DATE	
		RF	10-28-64	
DECIMALS		ELECT. DES.	DATE	
.X ± .05		RF	10-28-64	
.XX ± .01		MECH. DES.	DATE	
.XXX ± .005				
TOLERANCES		CL346		A
FRACTI NS		SHEET		REV. LTR.
± 1/64				
ANGLES				
± 0° 30'				

1	TTC-1	
QTY./UNIT	MODEL USED ON	ASS'Y. NO.
SCALE	C	S401-320(10-16-T)

NOTES

THE CONTENTS OF THIS DRAWING ARE THE EXCLUSIVE PROPERTY OF THE TECHNICAL MATERIEL CORP. ITS UNAUTHORIZED USE OR REPRODUCTION IN WHOLE OR IN PART IS STRICTLY FORBIDDEN.