

THE CONTENTS OF THIS DRAWING ARE THE EXCLUSIVE PROPERTY OF THE TECHNICAL MATERIEL CORP. ITS UNAUTHORIZED USE OR REPRODUCTION IN WHOLE OR IN PART IS STRICTLY FORBIDDEN.

REQ. PER UNIT
2

MODEL
HFA-1

USED ON
DATE
7-26-62

CL-289

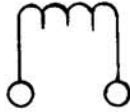
B

ELECTRICAL SPECIFICATIONS

L = 342 MH $\pm 2\%$ AT 1KC.

Q = 80 AT 250KC

SCHEMATIC



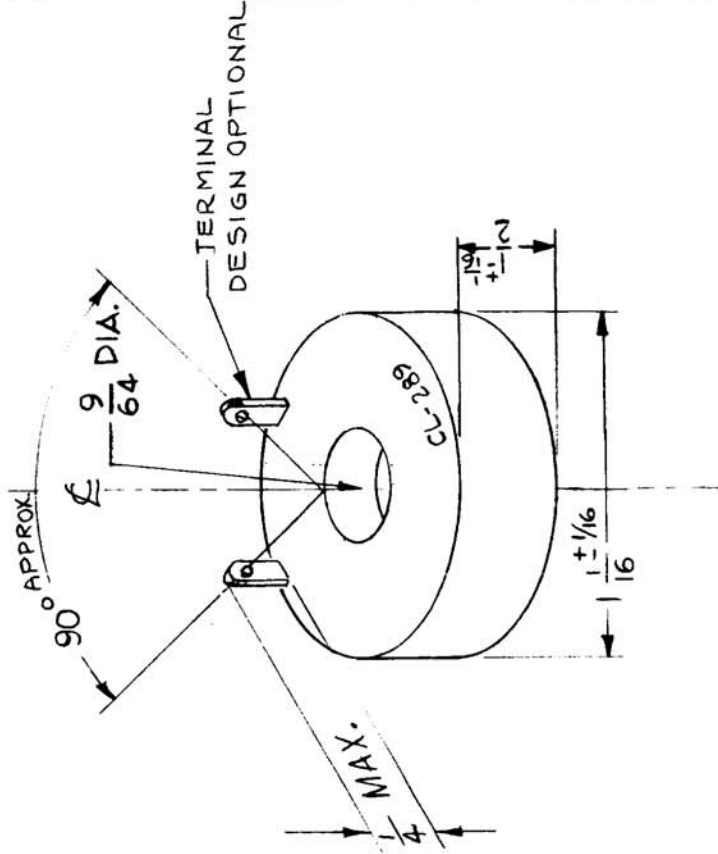
Q = 1 or GREATER AT 1KC
DC RES. = 1.28 Ω APPROX.

CURRENT RATING = 10MA

MECHANICAL SPECIFICATIONS

TOTAL TURNS - 205 APPROX.

WIRE - AWG# 29



REQ. ITEM	PART NO.	DESCRIPTION	SYMBOL
		THE TECHNICAL MATERIEL CORP. MAMARONECK, NEW YORK	
B		COIL, RF, FIXED, BFO	
A			
SYM			
UNLESS OTHERWISE SPECIFIED:			
DIMENSIONS ARE IN INCHES			
TOLERANCES ON			
FRAC. $\pm 1/64$ DEC. $\pm .005$ ANGLES $\pm 1/2^\circ$			
7.14.64	11707	ADB	
12/2/63	10546	WSP	
DATE	CH. NO.	DRAFTS	CHECKER
			ENG. APP.
SCALE: 2A-2416			
MAXIMUM ALLOWABLE TOLERANCES HAVE BEEN DETERMINED AND ANY DEVIATIONS WILL BE CAUSE FOR REJECTION. REMOVE ALL BURRS AND SHARP EDGES			
TYPE & TEMPER		HEATTREAT.SPEC.	CHECKED
DRAWN			FINAL APPROVAL
ELEC. DES. APP.		MECH. DES. APP.	
FINISH & SPEC. NO.			
			CL-289
			B