

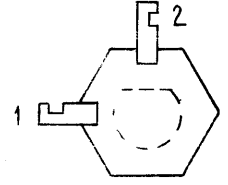
THE CONTENTS OF THIS DRAWING ARE THE EXCLUSIVE PROPERTY OF THE TECHNICAL MATERIEL CORP. ITS UNAUTHORIZED USE OR REPRODUCTION IN WHOLE OR IN PART IS STRICTLY FORBIDDEN.

STANDARD DRAWING

TEST FREQ.	TMC Part Number	Mfgr. Number	COIL Color Code	Minimum Inductance Range uh	MIN. Q Mean	DC Res. MAX.	L Distance To Winding	Wire Size AWG	W	X	Y	Coil Form Part Number	B Collar	T Collar	No. of Lugs Per Collar	TOTAL NO. OF LUGS	CODE COLOR CODE
7.9mc	CL-283-1	2060-1	Orange	2.0 - 3.7	50	0.13	11/16 ± 1/32	28E 21 turns	15/32	9/16	1/32	1536-3-3	Yes	Yes	1	2	GRN
7.9mc	CL-283-2	2060-2	Blue	3.5 - 7.0	55	0.5	11/16 ± 1/32	32E 26 turns	15/32	9/16	1/32	1536-3-3	Yes	Yes	1	2	GRN
7.9mc	CL-283-3	2060-3	Green	6.5 - 10.6	80	1.25	3/4 ± 1/32	6/44 litz 32 turns	---	9/16	---	1536-2-5	Yes	No	2	2	RED
2.5mc	CL-283-4	2060-4	Black	10 - 18	70	1.5	3/4 ± 1/32	6/44 litz 43 turns	---	9/16	---	1536-2-5	Yes	No	2	2	RED
2.5mc	CL-283-5	2060-5	Brown	16 - 30	75	2.0	3/4 ± 1/32	6/44 litz 52 turns	---	9/16	---	1536-2-5	Yes	No	2	2	RED
2.5mc	CL-283-6	2060-6	Yellow	28 - 63	80	2.5	25/32 ± 1/32	6/44 litz 68 turns	---	9/16	---	1536-1-5	Yes	No	2	2	YEL
2.5mc	CL-283-7	2060-7	Red	61 - 122	50	4.0	25/32 ± 1/32	6/44 litz 95 turns	---	9/16	---	1536-1-5	Yes	No	2	2	YEL
790kc	CL-283-8	2060-8	Silver	120 - 243	75	6.0	25/32 ± 1/32	6/44 litz 145 turns	---	9/16	---	1536-1-5	Yes	No	2	2	YEL
790kc	CL-283-9	2060-9	White	238 - 450	75	8.0	25/32 ± 1/32	6/44 litz 190 turns	---	9/16	---	1536-1-5	Yes	No	2	2	YEL
790kc	CL-283-10	Special	Gray	440 - 800	85	13.0	3/4 + 0 - 1/16	6/44 litz 260 turns	---	9/16	---	1536-1-5	Yes	No	2	2	YEL

SOLDER LUG ORIENTATION ON FORMS WITH PERMATORG, OR COMPRESSION LOCK HAVING FLATTED STUD.

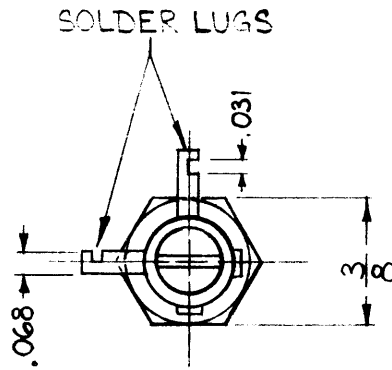
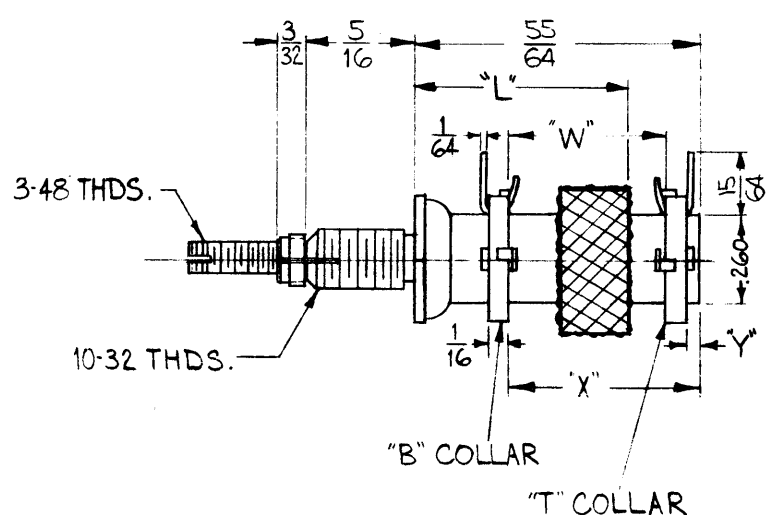
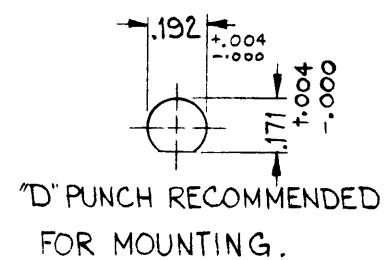
ONE-LUG COLLARS: POSITION 1
TWO-LUG COLLARS: POSITIONS 1&2



RIGHT END VIEW LUG POSITIONS

Hardware: Brass Cadmium Plate
Except Phosphor Bronze
Lockwasher, Cadmium Plate

Slug Lock Type: Perma-Torq



C	ONCL 283-5 IND. WAS 16-28, CHART TITLES REV. & COLUMN REVISED, CL 283-4 TURNS WERE 40	9-21-62	12327	SRG				
B	CL-283-10 MFG NO. WAS 2060-10	9-25-62	7230	GR				
A	55/64 DIM. WAS 27/32; TOL. ADDED TO .192 DIM. CHART REVISED; 15/64 DIM. WAS 3/16	4-27-62	6631	GE				
SYM	DESCRIPTION	DATE	CH. NO.	DRAFTS	CHECKER	ENG. APP.		
UNLESS OTHERWISE SPECIFIED:		SCALE: S401-167						
DIMENSIONS ARE IN INCHES		MAXIMUM ALLOWABLE TOLERANCES HAVE BEEN DETERMINED AND ANY DEVIATIONS WILL BE CAUSE FOR REJECTION.						
TOLERANCES ON FRACTIONS ± 1/64 DECIMALS ± .05 ANGLES ± 1/2°		REMOVE ALL BURRS AND SHARP EDGES						
REQ. PER UNIT	MODEL	SECTION	ASS'Y. NO.	DATE	USED ON			

REQ. ITEM	PART NO.	J. STRUMMER	DESCRIPTION	SYMBOL
STOCK SIZE		THE TECHNICAL MATERIEL CORP. MAMARONECK, NEW YORK		
MATERIAL		COIL, RF, Tuned		
TYPE & TEMPER	HEAT TREAT. SPEC.	DRAWN	CHECKED	FINAL APPROVAL
FINISH & SPEC. NO.		CL-283		