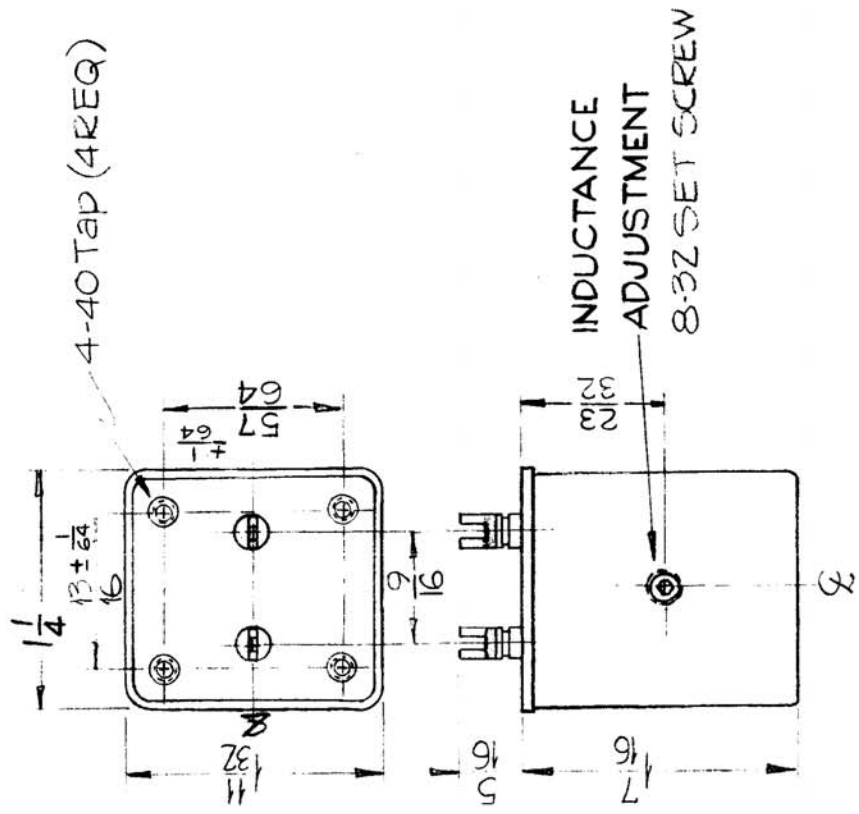


\* MEASURED AT 1VOLT, 1KC, ODC

REQ. PER UNIT	1
MODEL	TIS-3
USED ON	CL-261
ASSY. NO.	CL-261
DATE	10-25-60

CL-261 B

IMC PART	MFG. TYPE	MEAN HYS.	DC MA (MAX)
CL-261-1	V610	-541*	15



NOTE ~ INDUCTANCE VALUE MAY BE ADJUSTED FROM -45% TO +85% FROM MEAN VALUE BY ADJUSTING SET SCREW. RANGE IS COVERED IN 600° KOLATION.

CASE - STEEL (DIE CAST)  
FINISH - GREY ENAMEL

REF: 1110

REQ. ITEM	PART NO.	DESCRIPTION	SYMBOL
B 1		THE TECHNICAL MATERIEL CORP. MAMARONECK, NEW YORK	
B 3		REACTOR. VARIABLE	
A 2			
A 1			
ISSUE ITEM	CHANGED FROM		
<p>SCALE: MAXIMUM ALLOWABLE TOLERANCES HAVE BEEN DETERMINED AND ANY DEVIATIONS WILL BE CAUSE FOR REJECTION. REMOVE ALL BURRS AND SHARP EDGES</p>			
<p>DEC. DIM. ± FRAC. DIM. ± 1/32 ANGULAR DIM. ±</p>			
TOLERANCES		FINAL APPROVAL	
DATE		DRAWN	
CH. NO.		CHECKED	
DATE		ELEC. DES. APP. MECH. DES. APP.	
DATE		FINISH & SPEC. NO.	
DATE		FINISH & SPEC. NO.	