

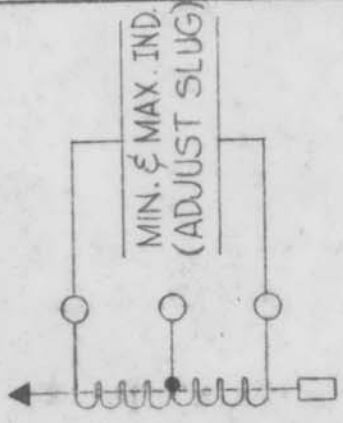
CL258 B

USED ON  
 REQ. PER UNIT: 1  
 MODEL: RFD-1  
 ASSY. NO.:  
 DATE: 10-25-66

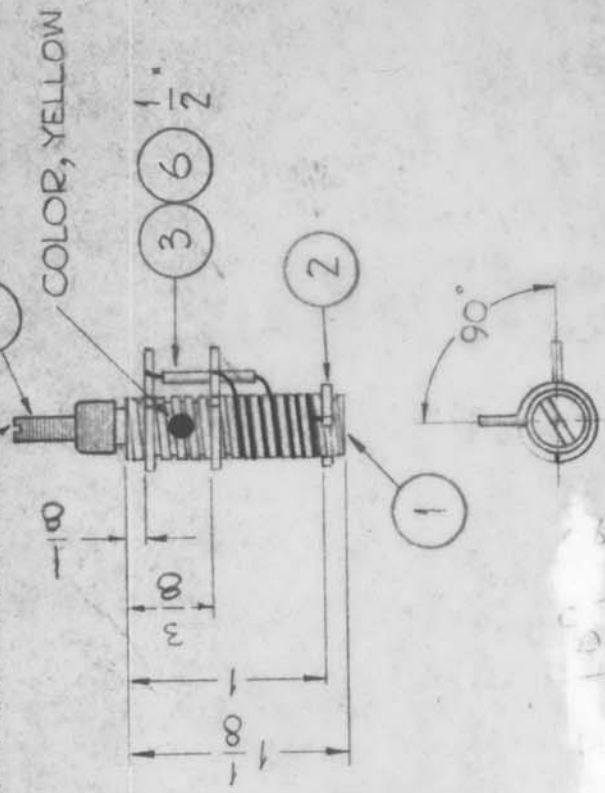
**PROCEDURE**

1. Force fit bushing (item 4) into form (item 1).
2. Secure terminals (item 2) to form with Insulex (item 6).
3. Wind 8-1/4 turns of wire (item 3) on form. Bring out tap at 4 turns from top. Slip Sleeving (item 7) over tap. Solder wire ends to proper terminals.
4. Paint winding with Insulex.
5. Bake for 1/2 hour at 250° F.
6. Insert core (item 5).
7. Test as shown below. Use Boonton Q - Meter Model 160A or Equivalent.

Minimum inductance must be less than - .50 uhy.  
 Maximum inductance must be more than - .80 uhy.  
 Q at 25 mc must be more than 130.  
 Test frequency - 25 mc  
 Operating frequency - 16-22 mc



**TOP OF TRANSFORMER**



REQ. ITEM	PART NO.	DESCRIPTION	SYMBOL
X 7	BS-100	Solder, Soft	
1/2"	PX-100-1-034	Insulation, Sleeving (Size 20)	Blk
X 5	GL-104-2	Insulex, U-85	
1	CI109-2	Core Tuning, Red	
X 3	WL-100-6	Wire, Buss (Size 20)	
3	TE-153-2	Terminal, Ring Type	
1	CF-128-2	Coil Form, Grooved	

REQ. ITEM	PART NO.	DESCRIPTION	SYMBOL
<b>THE TECHNICAL MATERIEL CORP.</b> MAMARONECK, NEW YORK CL-258 ASS'Y (LZ10) R.F. COIL, TUNED, 16-22 MC			
STOCK SIZE		MATERIAL	
TYPE & TEMPER		HEAT TREAT. SPEC.	
FINISH & SPEC. NO.		ELEC. DES. APP MECH. DES. APP	

ISSUE ITEM	CHANGED FROM	DATE	CH. NO.	DRAFTS CHECKER	ENG. APP.
B	MIN-MAX CHI REV.	2-7-69	19250	GE	FB
A	REVISED & REDRAWN	8-22-67	18448	H.G.	FB

TOLERANCES  
 DEC. DIM. ±  
 FRAC. DIM. ± 1/64  
 ANGULAR DIM. ±

SCALE: Full, Do Not Scale  
 MAXIMUM ALLOWABLE TOLERANCES HAVE BEEN DETERMINED AND ANY DEVIATIONS WILL BE CAUSE FOR REJECTION.  
 REMOVE ALL BURRS AND SHARP EDGES