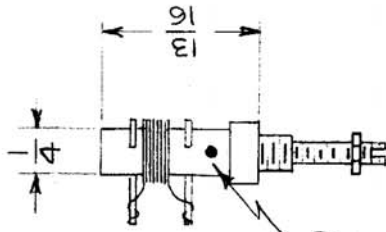


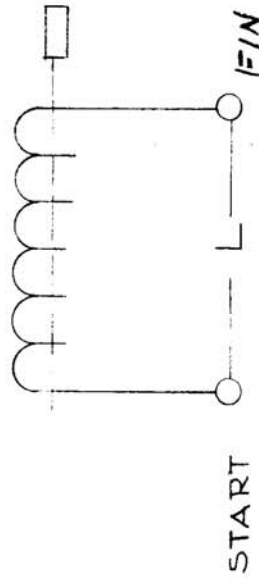
REQ. PER UNIT	USED ON	CL-249	A
MODEL	ASSY. N.	DATE	
CHG-1		9-26-1960	



COLOR CODE RED

OPER FREQ. MCS	CHG-1 SYM.	TEST FREQ.	Q. AT TEST FREQ. MUST BE GREATER THAN	NOMINAL IND (μH) % CORE
22	LH21			
22	LH09	25 Mc	90	0.63
24	L110			
24	L1120			

A REQUIRED IN CHG-1



REQ. ITEM	PART NO.	DESCRIPTION	SYMBOL
		THE TECHNICAL MATERIAL CORP. MAMARONECK, NEW YORK	
		COIL, RF, TUNED HF AMPLIFIER	
		G. DE LUCIA	
		DRAWN	CHECKED
		HEAT TREAT. SPEC.	FINAL APPROVAL
		FINISH & SPEC. NO.	CL-249
		ELEC. DES. APP.	MECH. DES. APP.

DATE 12-20-60
CH. NO. 3786
DRAFTS M.R. J. J. J.
CHECKER J. J. J.
ENG. APP. J. J. J.

SCALE: 2A-1981-4
MAXIMUM ALLOWABLE TOLERANCES HAVE BEEN DETERMINED AND ANY DEVIATIONS WILL BE CAUSE FOR REJECTION. REMOVE ALL BURRS AND SHARP EDGES

TOLERANCES
DEC. DIM. ±
FRAC. DIM. ±
ANGULAR DIM. ±