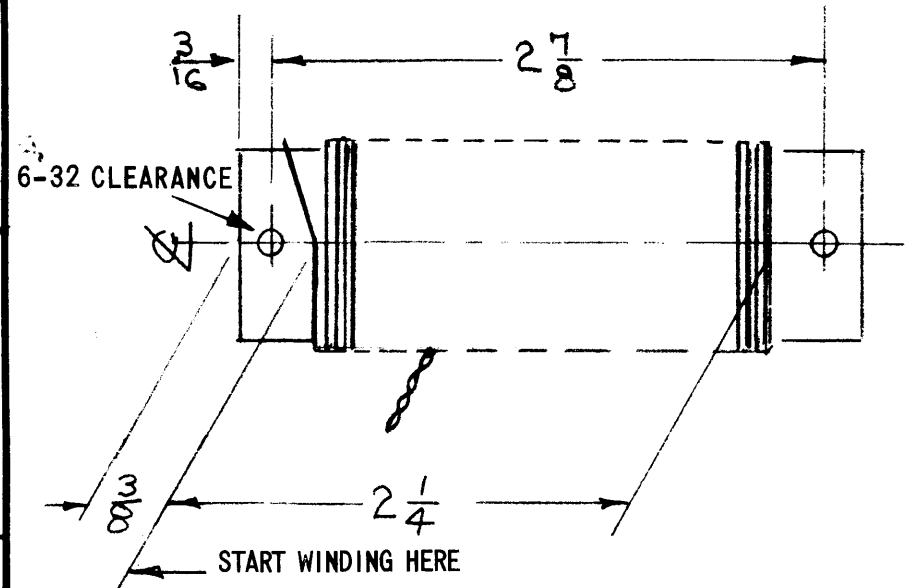
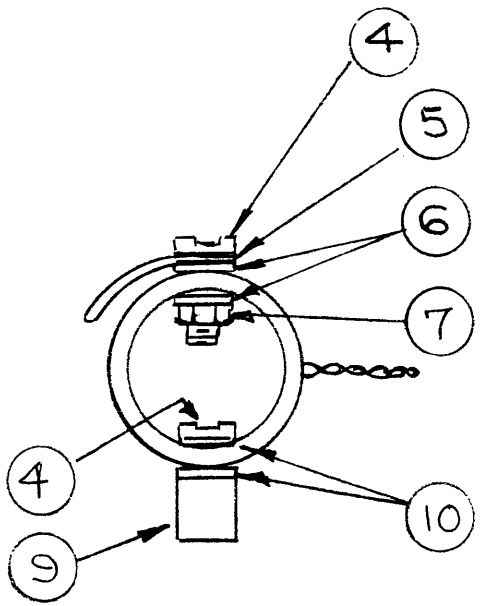
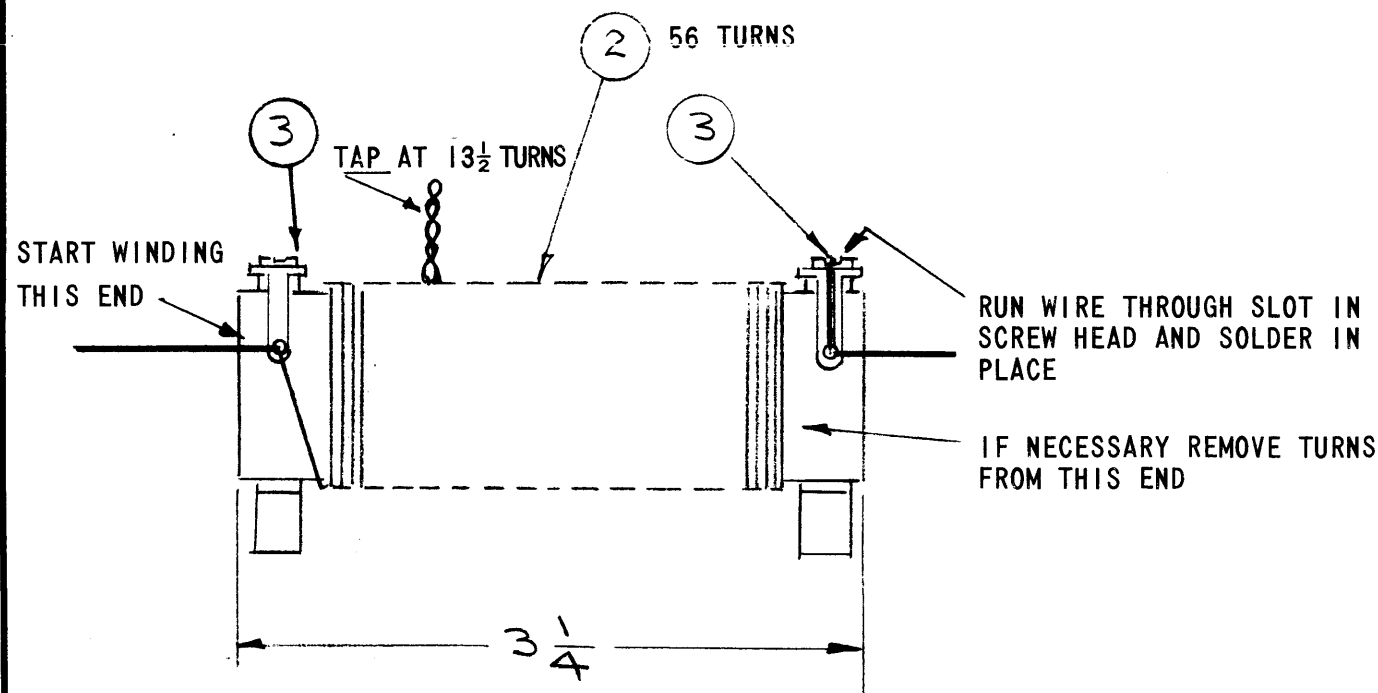


LEADS TO BE CONTINUOUS PART OF WINDING. EACH 3" LONG STARTING FROM LUG.

REVISIONS						
ZONE	LTR	DESCRIPTION	DATE	E.M.N.NO	DRAFT	CHKD APPD
	B	REVISED COMPLETELY	7/21/67	18354	C.V.	<i>[Signature]</i>



**PROCEDURE:**

1. WIND COIL AND MAKE SOLDER CONNECTIONS, TAP AT  $1\frac{3}{2}$  TURNS.
2. BAKE COIL FOR ONE HOUR AT  $100^{\circ}\text{C}$ .
3. COAT COIL WITH ITEM 8 (INSUL-EX U85) AND BAKE FOR ONE HOUR AT  $100^{\circ}\text{C}$ .
4. REPEAT STEP 3 TWICE MORE MAKING A TOTAL OF 3 COATS OF U-85.

**TEST SPECIFICATIONS:**

INDUCTANCE:  $27.5\ \text{UH} \pm 2\ \text{UH}$   
 FREQUENCY: 2.5 Mc (MUST BE MONITORED WITH COUNTER FOR INDUCTANCE MEASUREMENT)  
 MIN Q: 200

REQ'D	ITEM	PART NUMBER	DESCRIPTION	SYM.
4	10	WA120	WASHER, FIBER	
2	9	TE139-2	STAND-OFF STEATITE	
X	8	GL104-2	RESIN SYNTHETIC	
2	7	NTH0632BN8	NUT, HEX	
4	6	WA109-35	WASHER, FIBER	
2	5	TE104-2	TERMINAL, LOCKING	
4	4	SCRPO632BN5	SCREW, MACHINE	
X	3	BS100	SOLDER, TIN ALLOY	
20	2	WL100-7	WIRE, BUSS BAR	
1	1	CF109	COIL, FORM CERAMIC	

**LIST OF MATERIAL**

I	CMO	AO 103
QTY / UNIT	MODEL USED ON	ASS'Y NO.
APPLICATION		
	CODE	

**NOTICE TO PERSONS RECEIVING THIS DRAWING**  
 THE TECHNICAL MATERIEL CORPORATION claims proprietary right in the material disclosed hereon. This drawing is issued in confidence for engineering information only and may not be reproduced or used to manufacture anything shown hereon without permission from THE TECHNICAL MATERIEL CORPORATION to the user. This drawing is loaned for mutual assistance and is subject to recall at any time.

UNLESS OTHERWISE SPECIFIED DIMENSIONS ARE IN INCHES AND INCLUDE CHEMICALLY APPLIED OR PLATED FINISHES

DECIMALS .X ± .05  
 .XX ± .01  
 .XXX ± .005

FRACTIONS 1/64  
 TOLS. ANGLES 0° .30'

FINAL APPROVAL	DATE
<i>O.P.</i>	3-29-60
MECH. DES.	DATE
<i>A.M.</i>	3-29-60
ELECT. DES.	DATE
<i>ARF</i>	
CHECKED	DATE
<i>JAD</i>	
DRAWN	DATE
<i>PI</i>	3-29-60

<b>THE TECHNICAL MATERIEL CORP.</b> MAMARONECK, NEW YORK			
<b>COIL, OSCILLATOR, TANK</b>			
SIZE	CODE IDENT. NO.	DWG NO.	ISSUE
B	82679	CL 236	B
SCALE	SHEET		OF