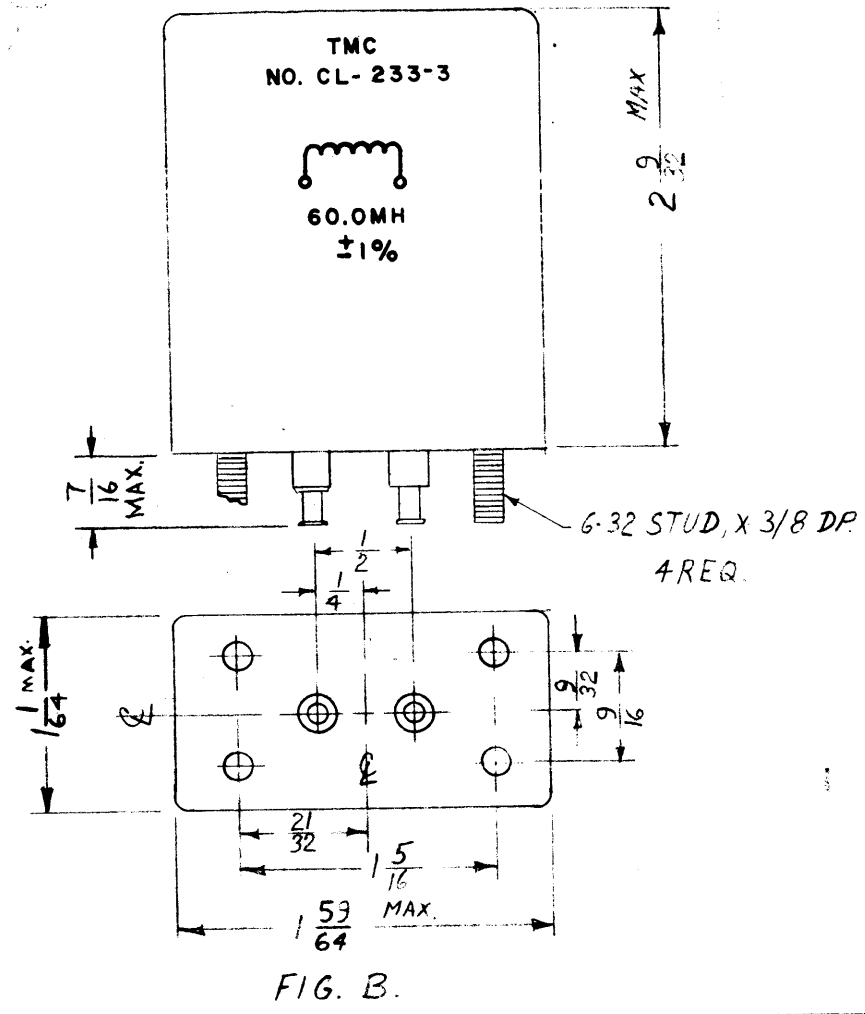
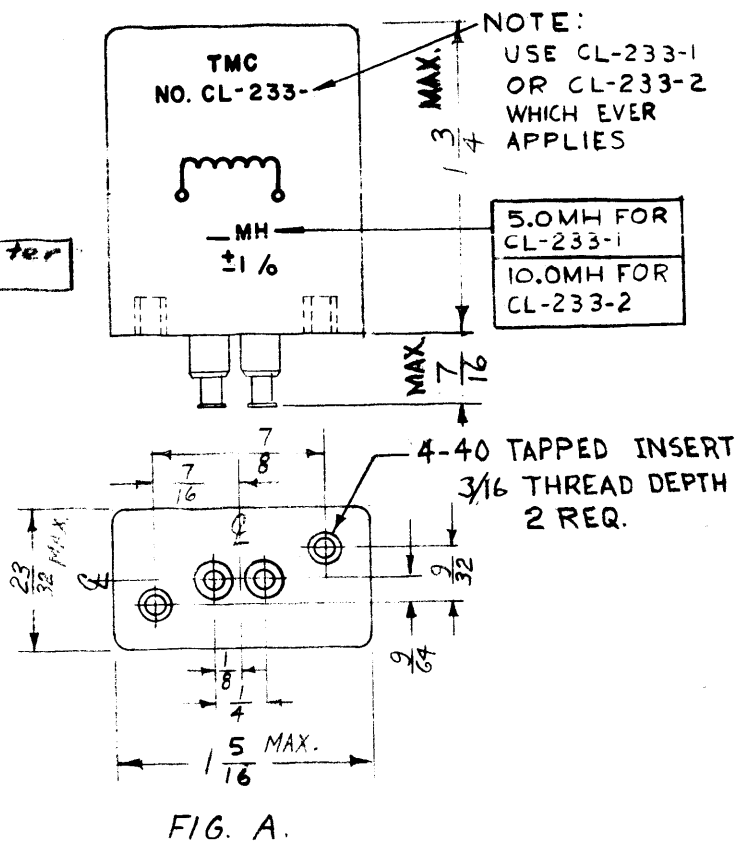


CL-233

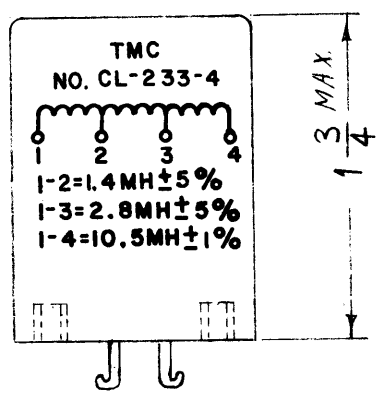
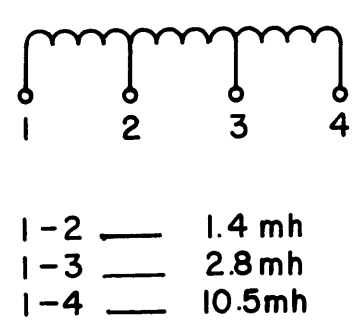
TMC PART NO.	MFG. PART NO.	INDUCTANCE mH SEE NOTE 1	TOTAL DC RESISTANCE OHMS ± 5%	DISTRIBUTED CAPACITY uuf MAX.	FIG	IND. TOL.	Q AT 8 TO 20 KCS
CL-233-1	96-0324-01	5.0	1.1	58	A	± 1%	100 or Greater
-2	96-0324-05	10.0	2.8	62	A	± 1%	100 or Greater
-3	96-0322-07	60.0	3.2	106	B	± 1%	100 or Greater ± 8 KC
-4	96-0381-00	1.4-2.8-10.5	12.7	65	C	TAPS ± 5% TOTAL ± 1%	100 or Greater

NOTES:  
 1. CL-233-1, 2 & 3 INDUCTANCE RATINGS SHOULD BE MEASURED AT 1KC, CL-233-4 INDUCTANCE RATINGS SHOULD BE MEASURED AT 10KC.  
 2. TERMINAL STYLES OPTIONAL

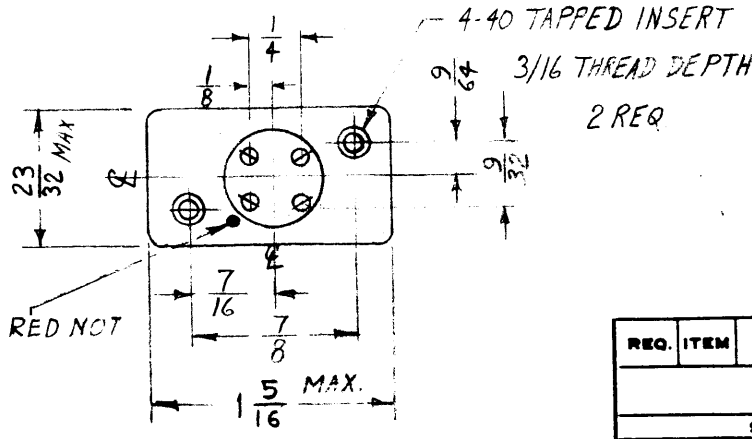
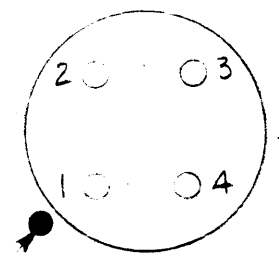
SPECIFICATIONS  
 PER MIL-T-27A GRADE 4  
 CLASS Q TEMP RANGE 55°C - +85°C  
 CASE - HERMETICALLY SEALED  
 FINISH - GREY  
 STAMPING - BLACK



SCHEMATIC DIAGRAM



TERMINAL ARRANGEMENT



NOTICE TO PERSONS RECEIVING THIS DRAWING

THE TECHNICAL MATERIEL CORPORATION claims proprietary right in the material disclosed herein. This drawing is issued in confidence for your information only and may not be reproduced or used to manufacture anything shown herein without permission from THE TECHNICAL MATERIEL CORPORATION to the user. This drawing is loaned for actual assistance and is subject to recall at any time.

Property of:  
 THE TECHNICAL MATERIEL CORPORATION  
 MAMARONECK, NEW YORK

ISSUE	ITEM	CHANGED FROM	DATE	CH. NO.	DRAFTS	CHECKER	ENG. APP.
G	+	NOTE 2 ADD. TMC CHART UPDATED FIG. A & B. 7/16 MAX DIM. ADD. ON SCHEM. ± 5% WAS ± 1% 2 PLACES	11-12-64	12910	92	@	
F	1	IN CL-233-1, 2 & 3. INDUCT TOL ADDED. NOTE 1. ADDED.	8-14-63	9745	AK	MS	
E	1	NOTE: ALL TAPS TO BE WITHIN ± 5% OF SPECIFIED INDUCTANCE DETELED	9-20-62	7215	GS	Hde	
D	1	STAMPING ADDED TO PICT'L	11-1-61	5766	BB	Fa	
C	3	1 1/16 DIM. WAS 1 (FIG. B)	10-16-61	5718	GG	GMS	
	2	1 59/64 DIM. WAS 1 29/32					
	1	1 5/16 DIM. WAS 1 19/64 (FIG. A)	7-13-61	5235	G.D.L.		
B	1	SCHEMATIC DIAGRAM ADDED	4-12-61	4632	MAF	Hde	
	2	TERMINAL ARRANGEMENT ADDED					
	3	ADDED TOTAL IND. TOL & Q COLUMN TO CHART ON CL-233-4. 2. TAPPED TO TOL DC RES. NOTE ADDED					
A	3	ON FIG. C 23/32 DIM WAS 11/16	4-12-61	4632	MAF	Hde	
	2	ON FIG. C 13/4 DIM WAS 1 1/16					
	1	ON FIG. C 1 9/16 DIM WAS 1 1/4					

TOLERANCES	SCALE: S401-102
DEC. DIM. ±	MAXIMUM ALLOWABLE TOLERANCES HAVE BEEN DETERMINED AND ANY DEVIATIONS WILL BE CAUSE FOR REJECTION. REMOVE ALL BURRS AND SHARP EDGES
FRACTIONAL DIM. ± 1/64	
ANGULAR DIM. ±	

REQ. PER UNIT	MODEL	PROJECT NO.	ASSY. NO.	DATE
	CLL-1			5-26-60

REQ. ITEM	PART NO.	DESCRIPTION	SYMBOL
		THE TECHNICAL MATERIEL CORP. MAMARONECK, NEW YORK	
		STOCK SIZE	
		COIL, FIXED, TOROIDAL	
		MATERIAL	
		TYPE & TEMPER	
		HEAT TREAT. SPEC.	
		FINISH & SPEC. NO.	
		CL-233	G