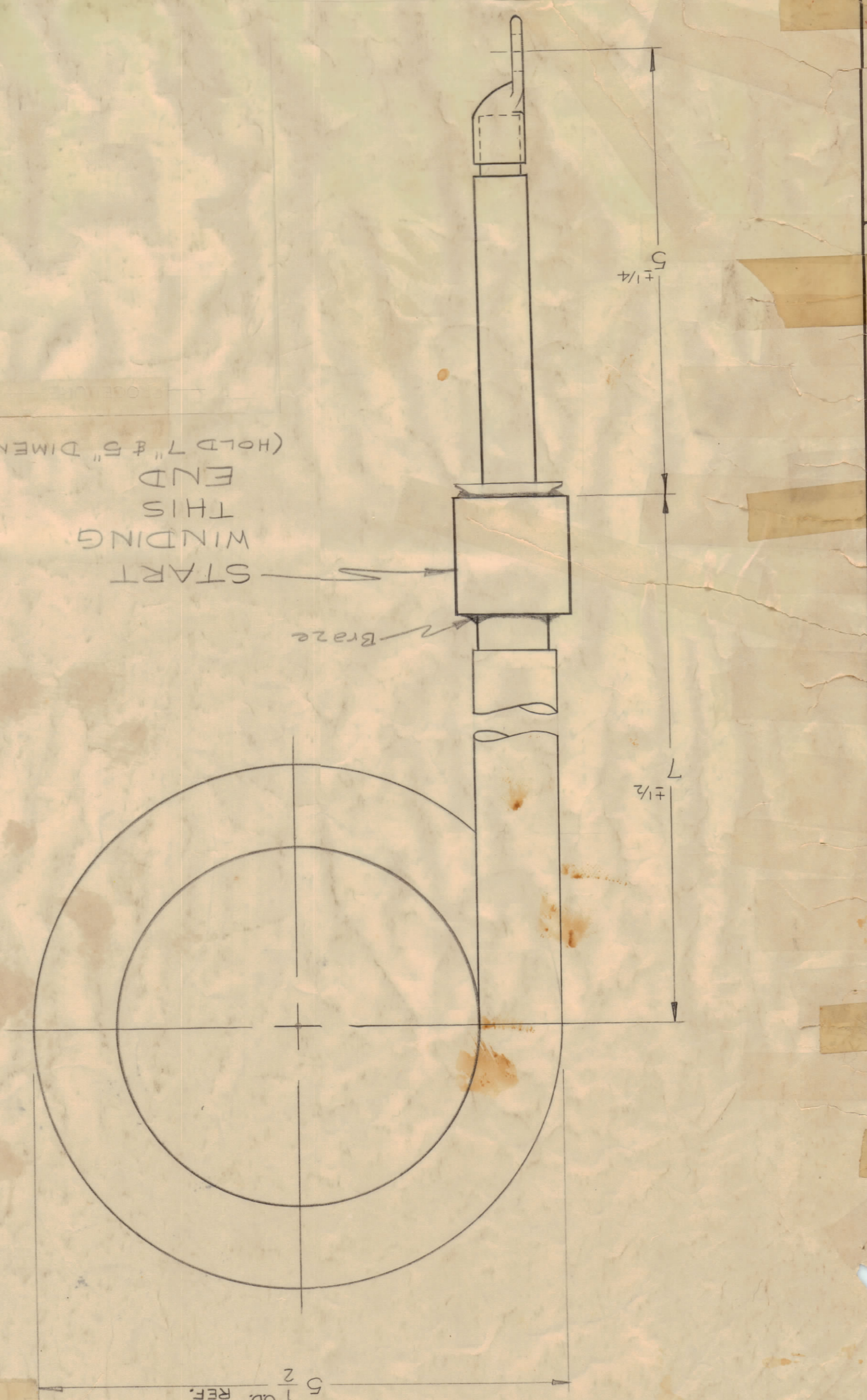


ISSUE NO.	DATE	DESCRIPTION	SCALE
A	10/31/57	REDAWN & REV. COMPL. PER A1853 FORM AT 10/31/57	

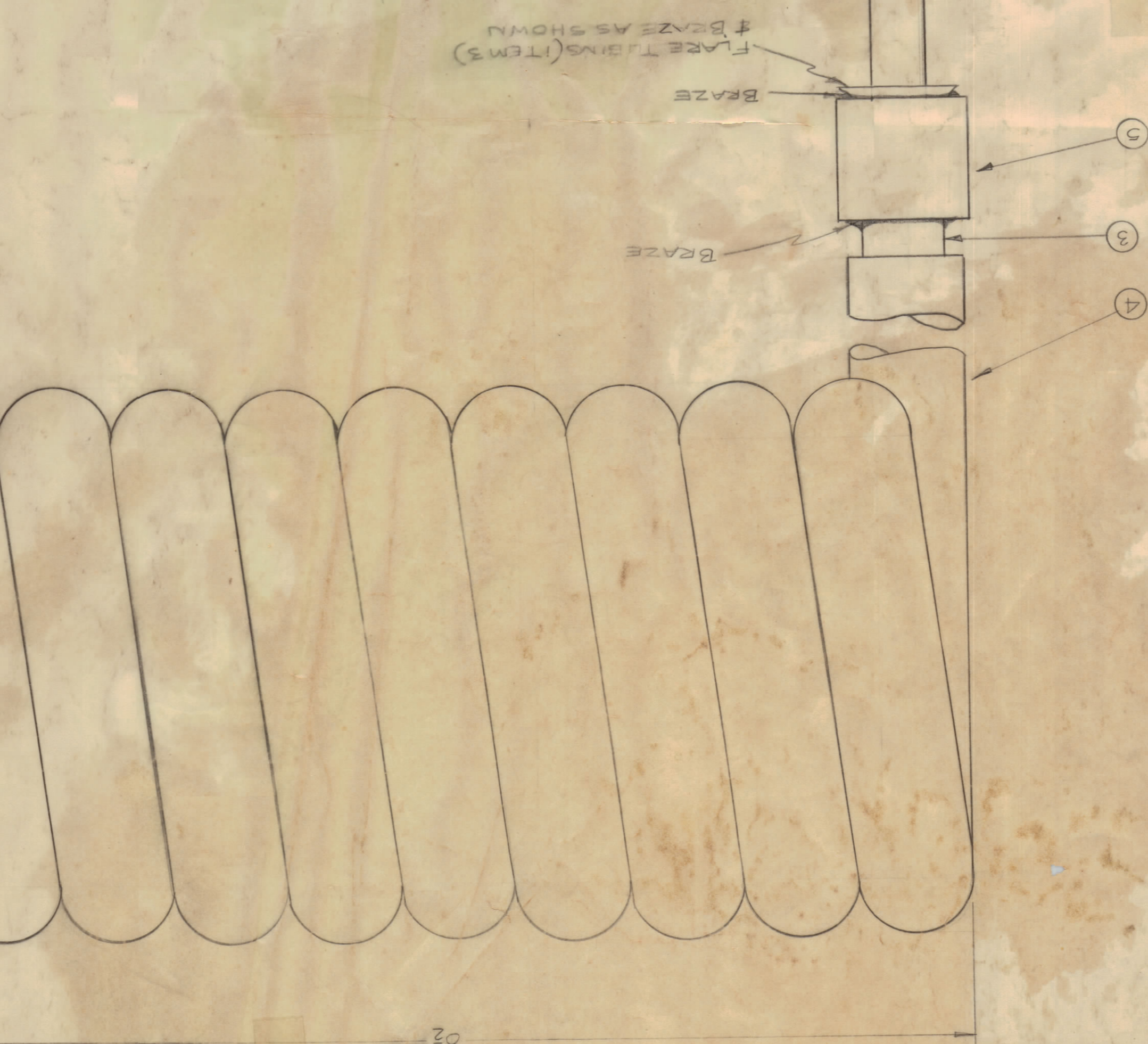
REVISIONS	DESCRIPTION	DATE	CHK. NO.	DATE	CHK. NO.	CHK. NO.	CHK. NO.

MAXIMUM ALLOWABLE TOLERANCES HAVE BEEN DETERMINED AND ANY DEVIATIONS WILL BE CAUSE FOR REJECTION. REMOVE ALL BURRS AND SHARP EDGES.

ANGULAR DIM. ±
FRACTION ±



STEP	PROCEDURE	DETAIL
1	CUT LENGTH OF COPPER TUBING 132 1/2" LONG (ITEM 3).	
2	SLIP END BUSHINGS, ITEM 5, ON BOTH ENDS OF TUBING. FLARE TUBING, BRAZE BUSHINGS TO TUBING, & SILVER PLATE.	
3	SLIP TEFLON TUBING, ITEM 4, (129 3/4" LG) OVER COPPER TUBING AND SHRINK IN PLACE PER 5825.	
4	INSERT WIRE, ITEM 1, 1/4\"/>	

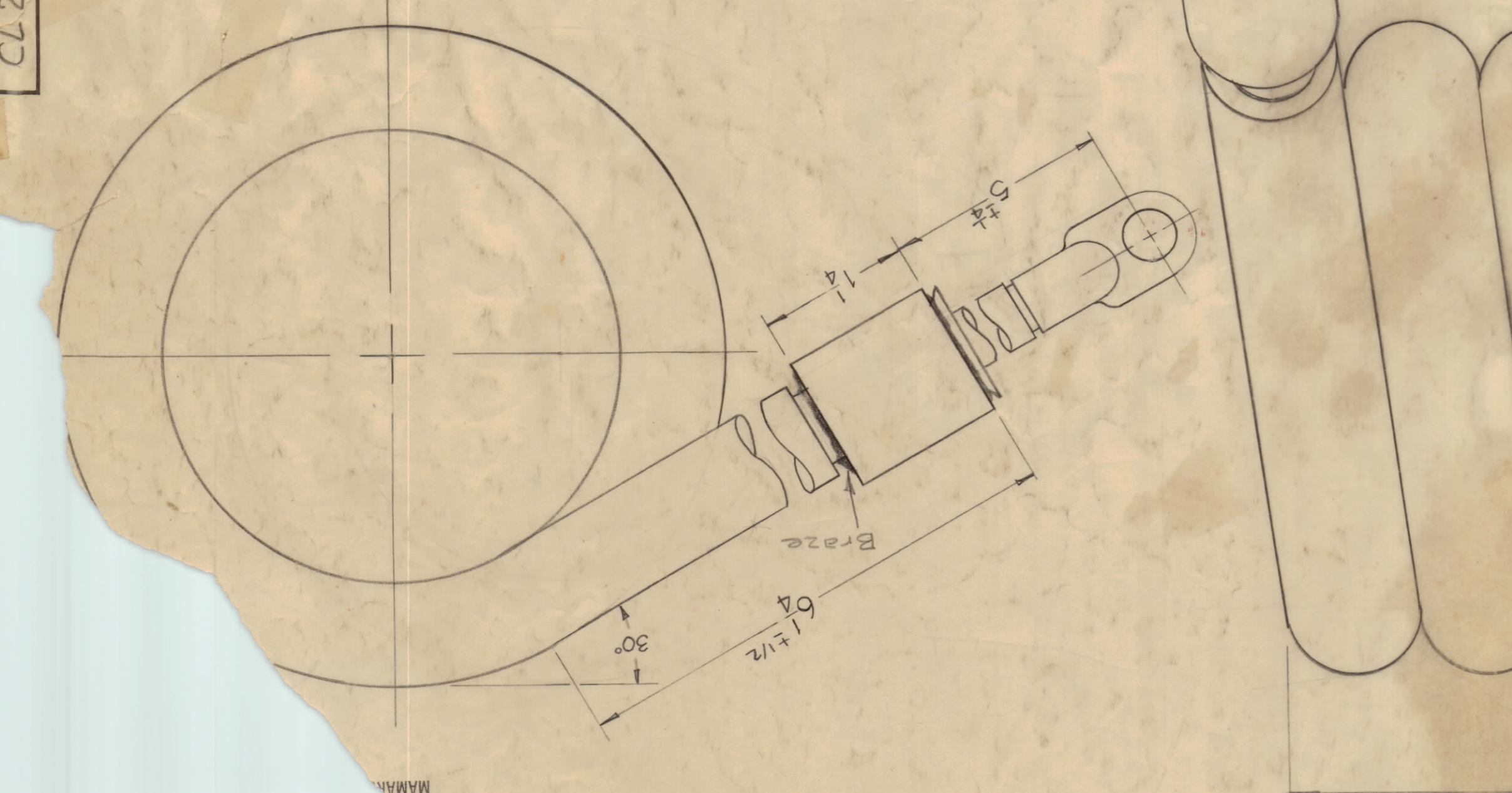


REQ. ITEM	PART NO.	DESCRIPTION	SYMBOL
1	TE-178-3	LUG, TERMINAL	X
2	PM 625	BUSHING, END	2
3	TU 100-12N	TUBING, COPPER, 3/4 OD	3
4	PX845-750	SLEEVING, TEFLON, SHRINK	4
5	TE-178-1	LUG, TERMINAL	1
6	WI 137-2	CABLE, STRANDED SIZE 0	6

REQ. ITEM	PART NO.	DESCRIPTION	SYMBOL
7	BS 101	SOLDER, SILVER	X
8	TE 178-3	LUG, TERMINAL	1
9	PM 625	BUSHING, END	2
10	PX 370-62-7	SLEEVING, TEFLON, 5/8 ID	10
11	WI 137-2	CABLE, STRANDED SIZE 0	11

NOTE:
WIND COIL ON 3/4 DIA. FORM.
(AS PER STEP 5)

SPECS.
OUTER COIL INDUCT. - 6 microhenries
INNER COIL INDUCT. - 7 microhenries
Q - 220 (OUTER)
Q - 185 (INNER)
TEST FREQ. - 7.9 MC



THE TECHNICAL MATERIAL CORP.
MAMARONECK, NEW YORK

NOTICE TO PERSONS:
This drawing is issued in the
information only and
to manufacture and
mission from THE
TION to the user
assistance and