

REQ. PER UNIT	MODEL	USED ON	SYMBOL
	AO-101	ASSY. NO. A0-102	CL-216 B
		DATE	

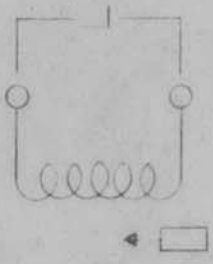
ELECT. SPECS.

Total Ind- .58- .64 wh
 Q at test Freq- 90 or Greater

Freq. (Test) - 25 mc
 MECH. SPECS.

Wire - #30 Magnet Wire
 Core - Powdered Iron
 Form - Phenolic

8-32 threaded Mtg. Bushing x 1/4 Lg.
 3-48 threaded tuning slug.



Hardware Supplied -

- One ea. 3-48 Hex Locking Nut } Brass,
- One ea. 8-32 Hex Mtg. Nut } Nickel
- One ea. #8 Internal Lockwasher } Plate

REQ. ITEM	PART NO.	DESCRIPTION	SYMBOL
		THE TECHNICAL MATERIEL CORP. MAMARONECK, NEW YORK	
		COIL, RF, TUNED, 26 MC	
		16	
		CHECKED	
		DRAWN	
		HEAT TREAT. SPEC.	
		FINISH & SPEC. NO.	
		ELEC. DES. APP. MECH. DES. APP.	
		FINAL APPROVAL	
		CL-216	B

7-22-66 16619 RME
 4-6-64 11159 A.M.
 DATE CH. NO. DRAGS
 SCALE NPL
 CHECKER
 ENG. APP.

MAXIMUM ALLOWABLE TOLERANCES HAVE BEEN DETERMINED AND ANY DEVIATIONS WILL BE CAUSE FOR REJECTION. REMOVE ALL BURRS AND SHARP EDGES

Q WAS 100
 Q WAS 115
 CHANGED FROM
 TOLERANCES
 DEC. DIM. ±
 FRAC. DIM. ±
 ANGULAR DIM. ±