

REQ. PER UNIT	MODEL	USED ON ASSY. NO.	DATE
	AO-101	AO-102	

CL-215 B

ELECT. SPECS.

Total Ind - .67 - .73 wh
 Q at test freq - 90 or Greater
 Freq. (Test) - 25 mc

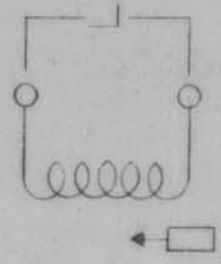
MECH. SPECS.

Wire - #30 Magnet Wire
 Core - Powdered Iron
 Form - Phenolic



Color Code Dot
(wh/red)

8-32 threaded Mtg. Bushing x 1/4 Lg.
 8-32 threaded tuning slug.



Hardware Supplied -

- One ea. 3-48 Hex Locking Nut } Brass,
- One ea. 8-32 Hex Mtg. Nut } Nickel
- One ea. #8 Internal Lockwasher } Plate

REQ. ITEM	PART NO.	DESCRIPTION	SYMBOL
B	Q WAS 100	THE TECHNICAL MATERIEL CORP. MAMARONECK, NEW YORK	
A 12	Q WAS 115	COIL, RF, TUNED, 24 MC	
ISSUE ITEM	CHANGED FROM		
TOLERANCES			
DEC. DIM. ±			
FRAC. DIM. ±			
ANGULAR DIM. ±			
	TYPE & TEMPER	DRAWN	CHECKED
	HEAT TREAT SPEC.		
	FINISH & SPEC. NO.		
			FLEC. DES APP MECH. DES. APP
			FINAL APPROVAL
			CL-215 B