

REQ. PER UNIT	MODEL	USED ON ASSY. NO.	DATE
	AO-101	AO-10Z	

CL-214 B

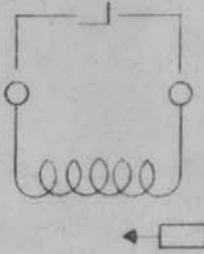
ELECT. SPECS.

Total Ind - .77 - .83 μ hy
 Q at test Freq - 90 or Greater
 Freq. (Test) - 25 mc

MECH. SPECS.

Wire - #30 Magnet Wire
 Core - Powdered Iron
 Form - Phenolic

8-32 threaded Mtg. Bushing x 1/4 Lg.
 3-48 threaded tuning slug.



Hardware Supplied -

- One ea. 3-48 Hex Locking Nut } Brass,
- One ea. 8-32 Hex Mtg. Nut } Nickel
- One ea. #8 Internal Lockwasher } Plate

REQ. ITEM	PART NO.	DESCRIPTION	SYMBOL
B	Q WAS 100	THE TECHNICAL MATERIEL CORP. MAMARONECK. NEW YORK	
A 11	Q WAS 115	COIL, RF, TUNED, 22 MC	
ISSUE ITEM	CHANGED FROM		
TOLERANCES			
DEC. DIM. \pm			
FRAC. DIM. \pm			
ANGULAR DIM. \pm			
DATE	CH. NO	DRAFTS CHECKER	ENG. APP.
7-22-66	16619	RME	gcb
4-6-64	11159	A.M.	H. G. B.
SCALE:	NPL	2A-1445-11	
MAXIMUM ALLOWABLE TOLERANCES HAVE BEEN DETERMINED AND ANY DEVIATIONS WILL BE CAUSE FOR REJECTION. REMOVE ALL BURRS AND SHARP EDGES			
TYPE & TEMPER	HEAT TREAT. SPEC.	DRAWN	CHECKED
FINISH & SPEC. NO.			ELEC. DES. APP. MECH. DES. APP.
CL-214			B