

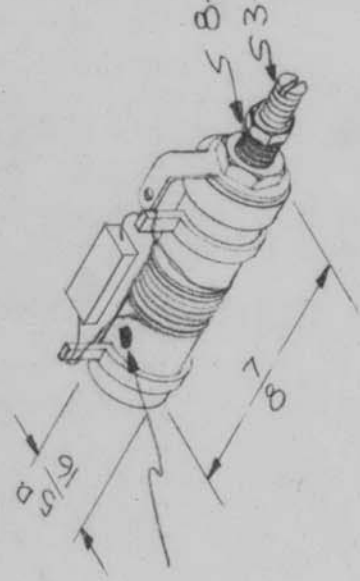
REQ. PER UNIT	1	MODEL	AO-101	ASSY. NO.	AO-1DZ	DATE	
							CL-208
							B

ELECT. SPECS.

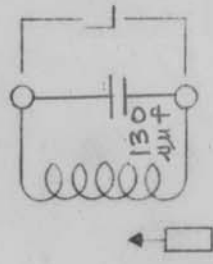
Total Ind - .95 - 1.01 why
 Q at test freq - 90 or Greater
 Freq. (Test) - 25 mc

MECH. SPECS.

Wire - #30 Magnet Wire
 Core - Powdered Iron
 Form - Phenolic



Color Code Dot
 (Yellow)



Hardware Supplied -

- One ea. 3-48 Hex Locking Nut } Brass,
- One ea. 8-32 Hex Mtg. Nut } Nickel
- One ea. #8 Internal Lockwasher } Plate

REQ. ITEM	DESCRIPTION	PART NO.	SYMBOL
B	Q WAS 100		THE TECHNICAL MATERIEL CORP. MAMARONECK, NEW YORK
A	Q WAS 115		COIL, RF, TUNED, 10 MC
ISSUE ITEM	CHANGED FROM	MATERIAL	
		HEAT TREAT. SPEC.	
		FINISH & SPEC. NO.	
		TYPE & TEMPER	
		DRAWN	CHECKED
		FINAL APPROVAL	
		CL-208 B	

MAXIMUM ALLOWABLE TOLERANCES HAVE BEEN DETERMINED AND ANY DEVIATIONS WILL BE CAUSE FOR REJECTION. REMOVE ALL BURRS AND SHARP EDGES