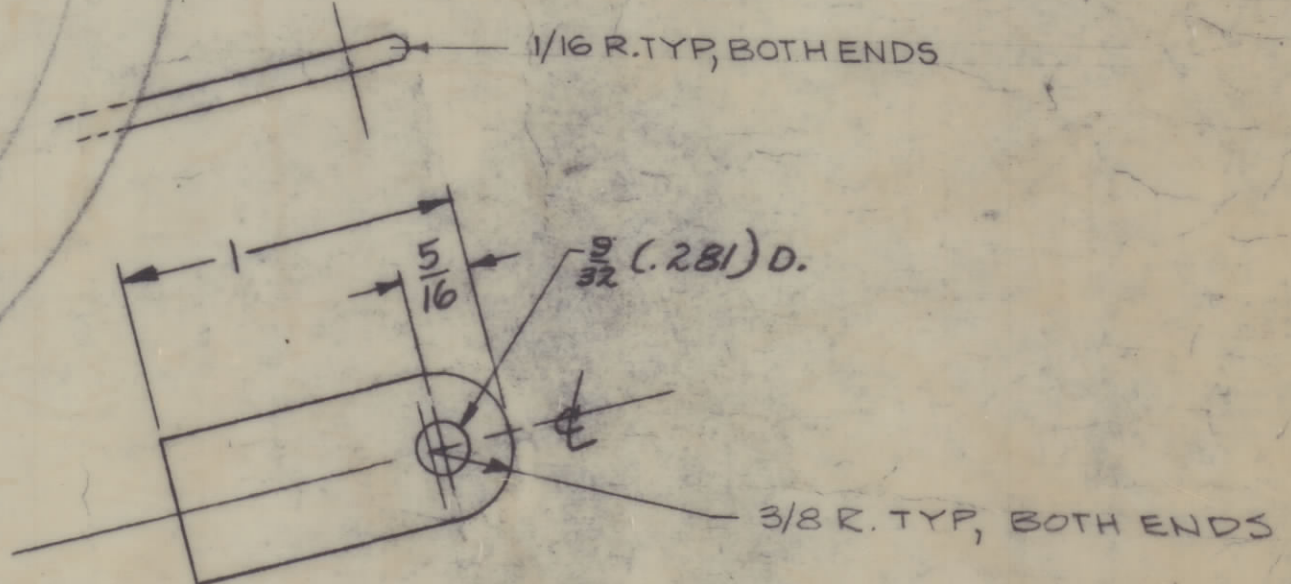
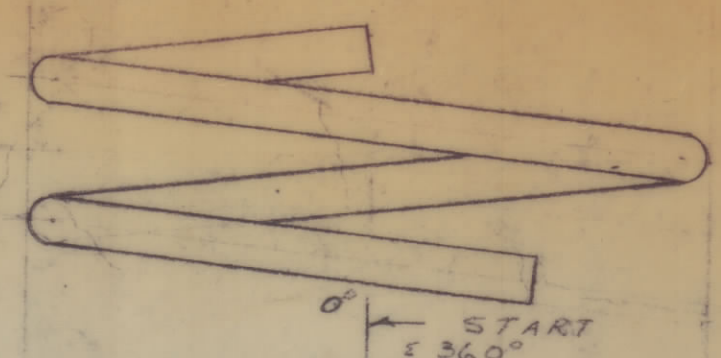
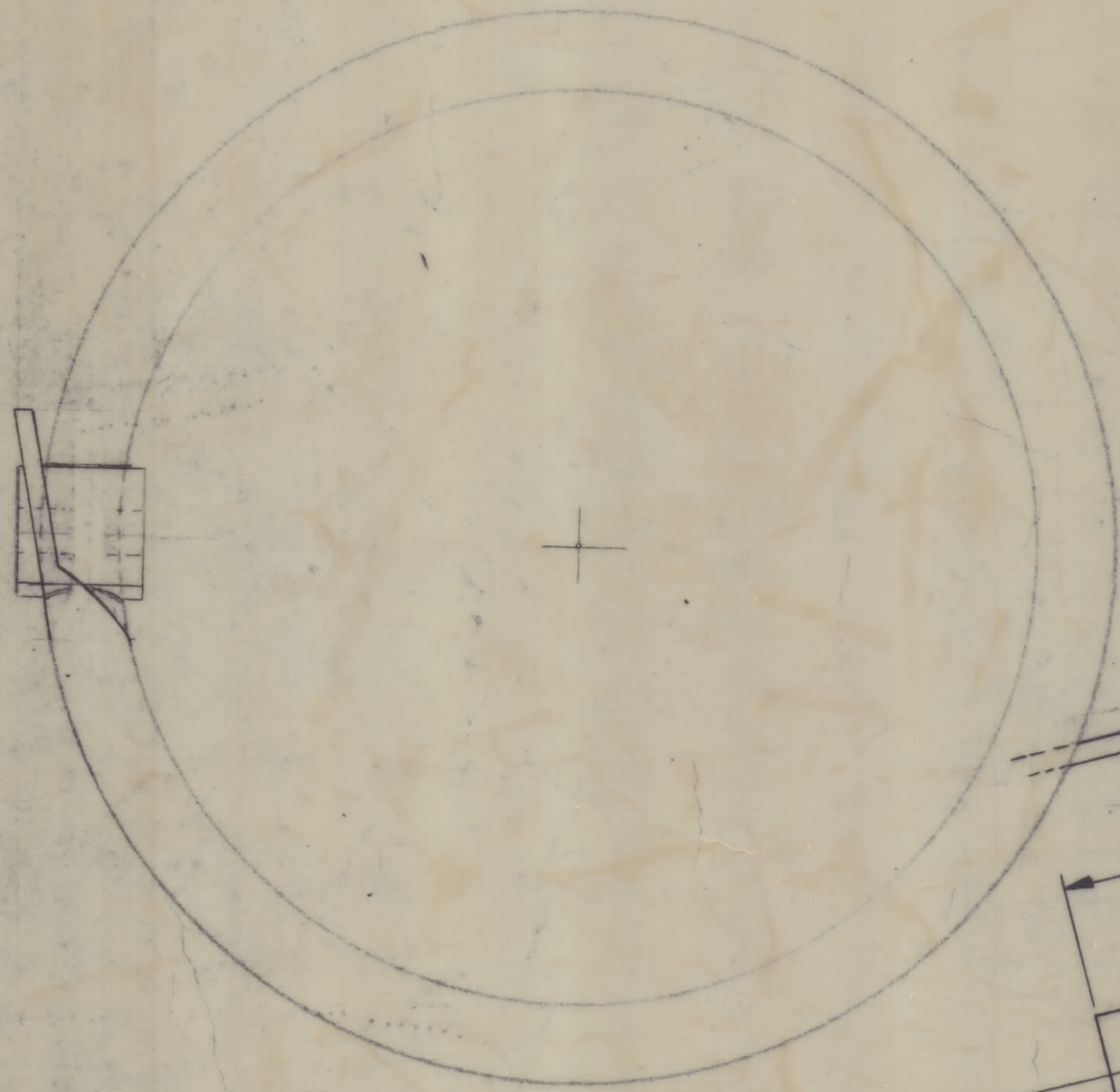
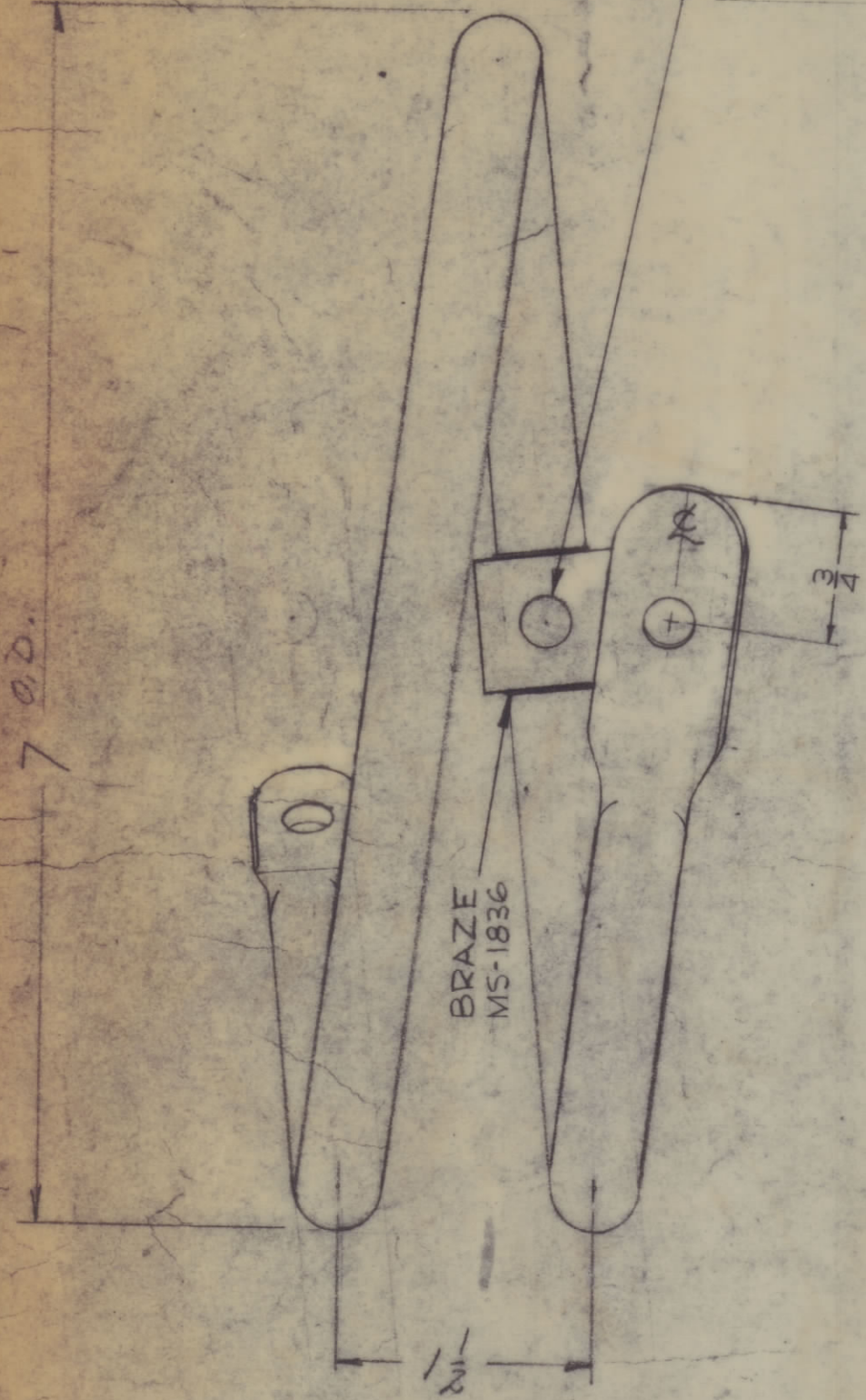


IF IT IS FOUND DESIRABLE TO CHANGE ANY TOLERANCE OR OTHER DETAIL SPECIFIED ON THIS DRAWING NOTIFY THE PURCHASER PROMPTLY.

MAXIMUM ALLOWABLE TOLERANCES HAVE BEEN DETERMINED AND DEVIATIONS WILL BE CAUSE FOR REJECTION. REMOVE ALL BURRS AND SHARP EDGES.

THE TECHNICAL MATERIEL CORP.
MAMARONECK, N.Y.

9/32 (.281) DIA. FOLLOW THRU HOLE TO BE DRILLED THRU COIL BEFORE PLATING



CL170 A

L = 1.5 MH ± 20 %
Q = 200 OR GREATER
TEST FREQ = 2.5 MHZ
OPEN FREQ = 24-28 MHZ

FINISH AFTER ASSEMBLY
STEP 1 - SILVER PLATE .0005
STEP 2 - CLEAR IRIDITE

1	2	MS-1836	CENTER TERMINAL, HF COIL
X	1	TU100-8N	TUBE, COPPER
REQ. ITEM	PART NO.		DESCRIPTION
1/2 O.D. TUBE			THE TECHNICAL MATERIEL CORP.
STOCK SIZE			MAMARONECK, NEW YORK
COPPER			HIGH FREQ. COIL
MATERIAL		WEIGHT PER PC.	
TYPE & TEMPER		DRAWN	ELEC. DES. APP.
HEAT TREAT. SPEC.		CHECKED	MECH. DES. APP.
FINISH & SPEC. NO.		FINAL APPROVAL	
SEE NOTE		CL 170 A	

A	REVISED & REDRAWN	6-4-71	20369	CP	P.E.
ISSUE ITEM	CHANGED FROM	DATE	CH. NO.	DRAFTS	CHECKER
TOLERANCES		SCALE: CP			
ALL OTHERS	DEC. DIM. ± 1/64	DRILL, PUNCH, COMMERCIAL STOCK SIZES AND MANUFACTURERS TOLERANCES ARE NOT INCLUDED.			
	FRAC. DIM. ± 1/64				
	ANGULAR DIM. ± 0.5°				

1	GAT-10RW	R.F. DECK	2-10-59
REQ. PER UNIT	MODEL	PROJECT NO.	DATE
		ASSY. NO.	
	USED ON		