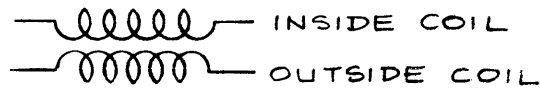
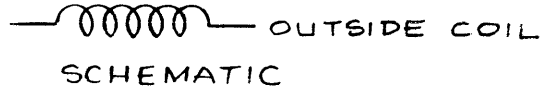


CL-160 B

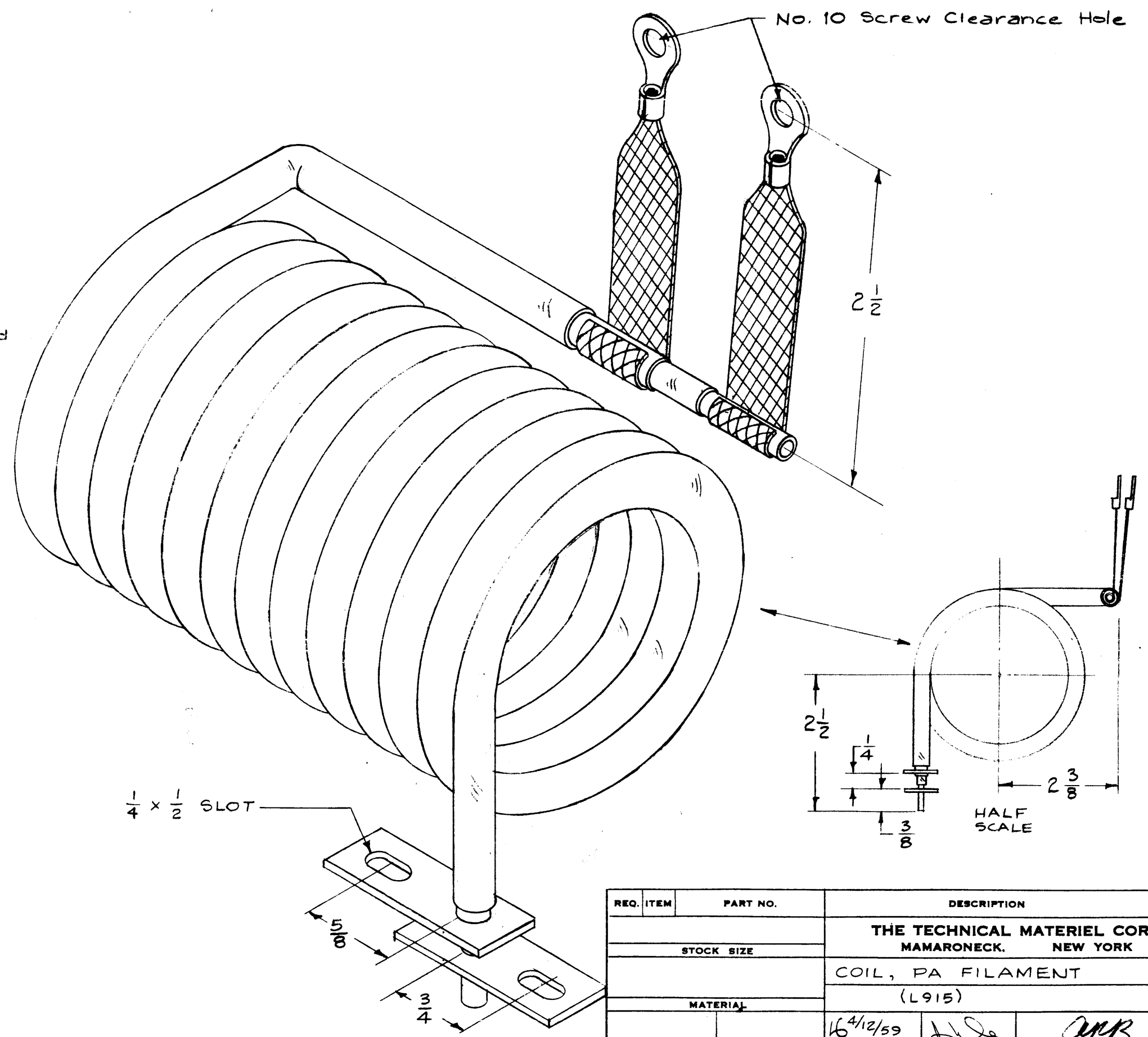
ELECTRICAL SPEC.
 INDUCTANCE - $5 \mu\text{hy} \pm 10\%$ each coil
 INSIDE COIL
 OUTSIDE COIL
 SCHEMATIC
 NOTE - Inside Coil completely Insulated from Outside Coil.

MECHANICAL SPEC.
 COIL I.D. - $2 \frac{1}{2}$ "
 COIL O.D. - $3 \frac{1}{4}$ "
 O/A LENGTH - $6 \frac{1}{2}$ " $\pm \frac{1}{4}$ "
 ALL DIMENSIONS ARE FOR REFERENCE UNLESS OTHERWISE NOTED.

NOTICE TO PERSONS RECEIVING THIS DRAWING

THE TECHNICAL MATERIEL CORPORATION claims proprietary right in the material disclosed hereon. This drawing is issued in confidence for engineering information only and may not be reproduced or used to manufacture anything shown hereon without permission from THE TECHNICAL MATERIEL CORPORATION to the user. This drawing is loaned for mutual assistance and is subject to recall at any time.

Property of:
 THE TECHNICAL MATERIEL CORPORATION
 MAMARONECK, NEW YORK



	$\pm 10\%$ INDUCTANCE ADDED	7-11-67	18394	LAK	<i>[Signature]</i>	<i>[Signature]</i>
	DELETED 1/16 TOL.; ADDED REF. DIM. NOTE.	9/29/66	16925	JL	<i>[Signature]</i>	<i>[Signature]</i>
ITEM	CHANGED FROM	DATE	CH. NO.	DRAFTS	CHECKER	ENG. APP.
TOLERANCES		SCALE: $\frac{1}{2}$ " = 1"		4A-166Z		

MAXIMUM ALLOWABLE TOLERANCES HAVE BEEN DETERMINED AND ANY DEVIATIONS WILL BE CAUSE FOR REJECTION. REMOVE ALL BURRS AND SHARP EDGES

1	GPT-10K	AX-137		4-12-59
REQ. PER UNIT	MODEL	PROJECT NO.	ASSY. NO.	DATE
USED ON				

REQ. ITEM	PART NO.	DESCRIPTION	SYMBOL
THE TECHNICAL MATERIEL CORP. MAMARONECK, NEW YORK			
STOCK SIZE			
COIL, PA FILAMENT (L915)			
MATERIAL			
		16 ^{4/12/59}	<i>[Signature]</i>
TYPE & TEMPER		HEAT TREAT. SPEC.	DRAWN
			CHECKED
			FINAL APPROVAL
			<i>[Signature]</i>
FINISH & SPEC. NO.		ELEC. DES. APP.	MECH. DES. APP.

CL-160 B