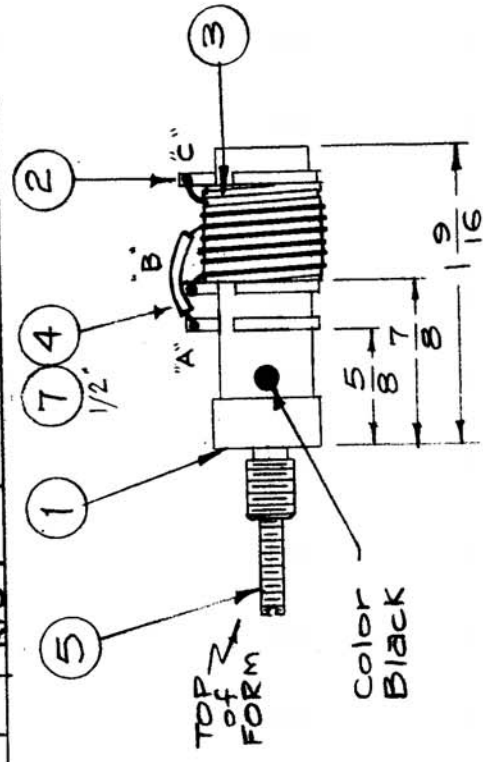
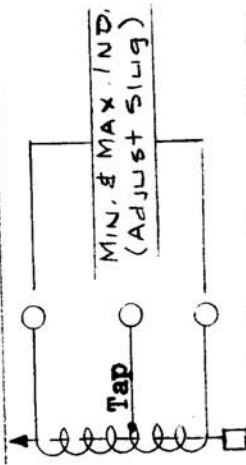


REQ. PER UNIT	USED ON	MODEL	ASBY. NO.	DATE
1		RFB-1	GPT-10K	12-19-58
		RFC-1		11-22-60

CL147 E



- PROCEDURE**
- Slip two terminal rings (item 2) on form (item 1) as shown. (Marked "A" and "B")
  - Force fit outer form (item 3) onto inner form (item 1) and cement with Insulex (item 6).
  - Slip terminal ring marked "C" on inner form.
  - Cement all rings to inner form.
  - Wind 6 turns of wire (item 4) on outer form. Bring out tap at 4 turns from top. Slip Sleeve (item 7) over tap. Solder all wire ends to proper terminals.
  - Paint winding with Insulex.
  - Bake for 1/2 hour at 250°F.
  - Insert core (item 5).
  - Tap as shown below. Use Boonton Q - Meter Model 160A or Equivalent.



Minimum inductance must be less than - .60 uhy.  
 Maximum inductance must be more than - .78 uhy.  
 Q at 25 Mc must be more than - 140  
 T st frequency - 25 Mc.  
 Operating frequency - 16-20 Mc.

REQ. ITEM	PART NO.	DESCRIPTION	SYMB L
8	ES-100	Solder, Soft	
1/2"	FX-100-1-.012	Insulation, Sleeveing (Size 18)	Blk
6	GL-104-2	Insulex, U85	
5	CI-109-19	Case, Tuning, Red	
4	WL-100-5	Wire, Buss (Size 18)	
3	CF-125-3PO.50	Coil Form, Grooved	
2	TE-153-3	Terminal, Ring Type	
1	CP-119-1.562	Coil Form, w/Bushing	
STOCK SIZE		THE TECHNICAL MATERIEL CORP. MAMARONECK, NEW YORK	
MATERIAL		RF COIL ASSY, TUNED	
TYPE & TEMPER. HEAT TREAT. SPEC.		16-20 MC (CL-147)	
FINISH & SPEC. NO.		16 12/19/58	
DRAWN		ATB	
CHECKED		JWA	
FINAL APPROVAL		CL147	E.

ISSUE ITEM	CHANGED FR M	DATE	CH. NO.	DRAFTS	CHECKER	ENG. APP.
E	Redrawn	6/17/71	20339	CL		DEK
SCALE: FULL						
MAXIMUM ALLOWABLE TOLERANCES HAVE BEEN DETERMINED AND ANY DEVIATIONS WILL BE CAUSE FOR REJECTION. REMOVE ALL BURRS AND SHARP EDGES						
TOLERANCES						
DEC. DIM. ±						
FRAC. DIM. ± 1/64						
ANGULAR DIM. ±						