

CL-118 J

TOTAL IND. IN μ HY	MFG. PART NO.	NO. OF TURNS	COIL I. D. $\pm 1/32$	DIM. "A" COIL WIDTH	DIM. "B" MTG. WIDTH	DIM. "C" MTG. LENGTH	DIM. "D" O/A HEIGHT	DIM. "E" O/A LENGTH	DIM. "F" SUPPORT LENGTH	DIM. "G" COIL CENTERS	"H" LEG ANGLE
2.6	232-627	6	2 1/2"	1/4"	3 1/4"	ONE BASE	4 5/8"	1 5/8"	17/16	3/16"	38°
4.2	232-628	12	2 1/2"	1/4"	3 1/4"	3"	4 5/8"	4 15/16"	4 5/8"	3/8"	38°
5.2	232-630	11	2 1/2"	1/4"	3 1/4"	1 1/4"	4 5/8"	3 7/32"	3"	1/4"	38°
8.2	232-623	10	3 1/4"	1/4"	3 1/4"	1 1/8"	5 3/8"	2 11/32"	2 3/16"	3/16"	33°
10	232-626	18	2 1/2"	1/4"	3 1/4"	3"	4 5/8"	4 31/32"	4 3/4"	1/4"	38°
14	232-611	20	2 1/2"	1/4"	3 1/4"	2 1/4"	4 5/8"	4 7/32"	4 1/16"	3/16"	38°
20	232-624	23	3 1/4"	1/4"	3 1/4"	4 1/4"	5 3/8"	6 7/32"	6"	1/4"	33°
22	232-TA	30	2 1/2"	1/4"	3 1/4"	4 3/8"	4 3/16"	6	6	3/16	38°
30	232-629	20	4"	1/4"	3 3/4"	2 1/4"	6"	4 7/32"	4 1/16"	3/16"	30°
31	232-610	40	2 1/2"	1/4"	3 1/4"	6"	4 5/8"	7 31/32"	7 13/16"	3/16"	38°
39	232-632	49	2 1/2"	1/4"	3 1/4"	7 11/16"	4 5/8"	9 21/32"	9 1/2"	3/16"	38°
41	232-622	34	3 1/4"	1/4"	3 1/4"	4 5/8"	5 3/8"	6 19/32"	6 7/16"	.180	33°
54	232-631	42	3 1/4"	1/4"	3 1/4"	6 1/16"	5 3/8"	8 1/32"	7 7/8"	.180	33°
84	232-620	46	4"	1/4"	3 3/4"	7 1/8"	6"	9 3/32"	8 15/16"	3/16"	30°
* 41	232-622-2	34	3 1/4"	1/4"	3 1/4"	4 1/4"	5 3/8"	6 19/32"	6 7/16"	.180	33°

ELEC. SPEC.
 Q = ALL COILS - APPROX 450 @ 2.5MC
 CURRENT RATING = 5 AMPS.

MECHANICAL SPEC.
 ALL COILS - CADMIUM PLATED
 COPPER STRIP.
 SUPPORT BARS, GLASS BONDED
 MICA.

STANDARD DRAWING

NOTICE TO PERSONS RECEIVING THIS DRAWING

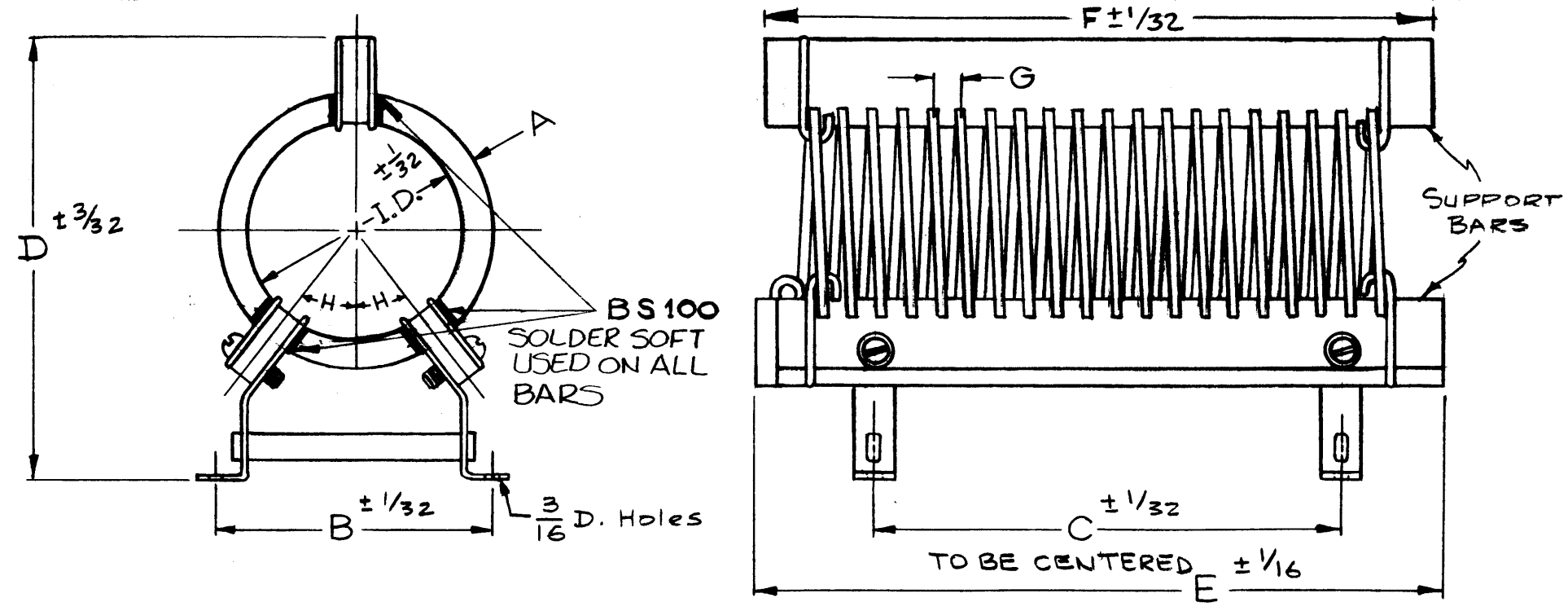
THE TECHNICAL MATERIEL CORPORATION claims proprietary right in the material disclosed hereon. This drawing is issued in confidence for engineering information only and may not be reproduced or used to manufacture anything shown hereon without permission from THE TECHNICAL MATERIEL CORPORATION to the user. This drawing is loaned for mutual assistance and is subject to recall at any time.

Property of:
 THE TECHNICAL MATERIEL CORPORATION
 MAMARONECK, NEW YORK

TMC PART NO. TO BE IN THE FOLLOWING FORM

CL-118-2.6-1

BASIC TMC PART NO. * SPECIAL DIMENSION
 TOTAL INDUCTANCE IN μ HY (See Chart)



ISSUE	ITEM	CHANGED FROM	DATE	CH. NO.	DRAFTS	CHECKER	ENG. APP.	ISSUE	ITEM	CHANGED FROM	DATE	CH. NO.	DRAFTS	CHECK	ENG. APP.
E	1	BX-100 SOLDER NOTE Added	1-9-62	6173	RB	JCB	JCB	J	1	ON-22 "C" WAS 4 1/8	1/5/68	18703	HG	SG	FB
D	1	MFG. PART NO. 232-619 deleted	2-7-61	4095	M.A.F.	JCB	JCB	H	1	ON-22 "C" WAS 4 3/8, E & F WERE 5 1/8	11/1/67	18585	HG	SG	FB
C	1	TOTAL IND. 20A WAS 20	8/9/60	2730	RU	JCB	JCB	G	1	-22 ADDED	9/19/67	18515	HG	SG	FB
B	1	REDRAWN-REVISED Added to chart	11-2-59	1528	J.C.B.	JCB	JCB	F	2	TO BE CENTERED NOTE ADD. * 41 μ HY ADD., ON TMC P/N -1 ADD.	8.12.64	11742	AB	JCB	

REQ. ITEM	PART NO.	DESCRIPTION	SYMBOL
		THE TECHNICAL MATERIEL CORP. MAMARONECK, NEW YORK	
		COIL, RF, FIXED	
		MATERIAL:	
		J.C. Biele	
		10-29-59	
		TYPE & TEMPER	
		HEAT TREAT. SPEC.	
		FINISH & SPEC. NO.	
		ELEC. DES. APP.	
		MECH. DES. APP.	