

STANDARD DRAWING

IF IT IS FOUND DESIRABLE TO CHANGE ANY TOLERANCE OR OTHER DETAIL SPECIFIED ON THIS DRAWING NOTIFY THE PURCHASER PROMPTLY.

MAXIMUM ALLOWABLE TOLERANCES HAVE BEEN DETERMINED AND DEVIATIONS WILL BE CAUSE FOR REJECTION. REMOVE ALL BURRS AND SHARP EDGES

CL-100 D

USED ON

DATE

ASSY. NO.

PROJECT NO.

MODEL

TMC NO	MFG. PART NO.	TOTAL PI	INDUCTANCE	CURRENT		APPROX. RESIST. OHMS	DIMENSION "A" ± 1/16	WIRE AWG.
				RATED MA.	MAX. MA.			
CL-100-1	R-33-1	SEE NOTE 1	1 ± 10%	850	1000	.06	.221	26 EN
CL-100-2	R-33-10	2	10 ± 10%	75	100	1.0	1/4	36 ESN
CL-100-3	R-33-50	2	50 ± 10%	75	100	4.0	5/16	36 ESN
CL-100-4	R-33-100	2	100 ± 10%	75	100	5.5	5/16	36 ESN
CL-100-5	R-33-750	2	750 ± 10%	75	100	16.0	.442	36 ESN
CL-100-6	TMC SPECIAL	2	10 ± 30%	525	650	330 MAX.	3/8	28 DN

NOTES: 1. PT. 1 IS SINGLE LAYER COIL.

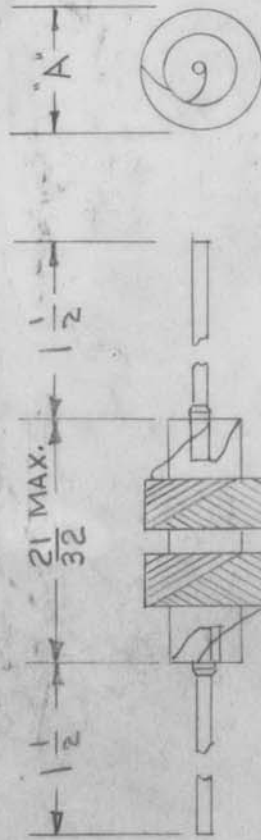
2. MAX. CURRENT TO BE USED ONLY WHEN COIL IS IN FREE SPACE.

3. PIGTAILS - #21 AWG TINNED COPPER WIRE.

4. FORM - MOLDED BAKELITE

5. FINISH - FUNGUS RESISTANT VARNISH.

DIMENSIONS FOR REF. ONLY.



PT. NOS. 3 & 4 SHOWN (DOUBLE SIZE)

ISSUE ITEM	CHANGED FROM	DATE	CN. NO.	DRAFTS CHECKER	ENG. APP.
D 1	MFG. DWG. NO. DELETED. CHART & PICT. CLARIFIED. MFRS CODE ADDED	8-19-63	9785	AK.	AKB
C 1	NATIONAL PART # CLARIFIED	8-10-62	7021	S.S.	AKB
B 1	CL-100-5, IND. WAS TGS	5/25/56	2	AKB	H.J.J.
A 1	PH WAS M.H.	1/25/54	1	AKB	GT.O

TOLERANCES

DEC. DIM. ±
FRAC. DIM. ±
OTHERS ANGULAR DIM. ±

SCALE S-401-122
DRILL, PUNCH, COMMERCIAL STOCK SIZES AND MANUFACTURERS TOLERANCES ARE NOT INCLUDED.

REQ. ITEM	PART NO.	DESCRIPTION	SYMBOL
—	—	THE TECHNICAL MATERIEL CORP. MAMARONECK. NEW YORK	
STOCK SIZE			
—	—	CHOKE, R.F.	
MATERIAL			
—	—	C.O.D. 9-20-54	GT.O
TYPE & TEMPER			
—	—		
HEAT TREAT. SPEC.			
—	—		
FINISH & SPEC. NO.			
—	—		

MECH. DES. APP.

ELEC. DES. APP.

CHECKED

DATE

FINAL APPROVAL

CL-100 D