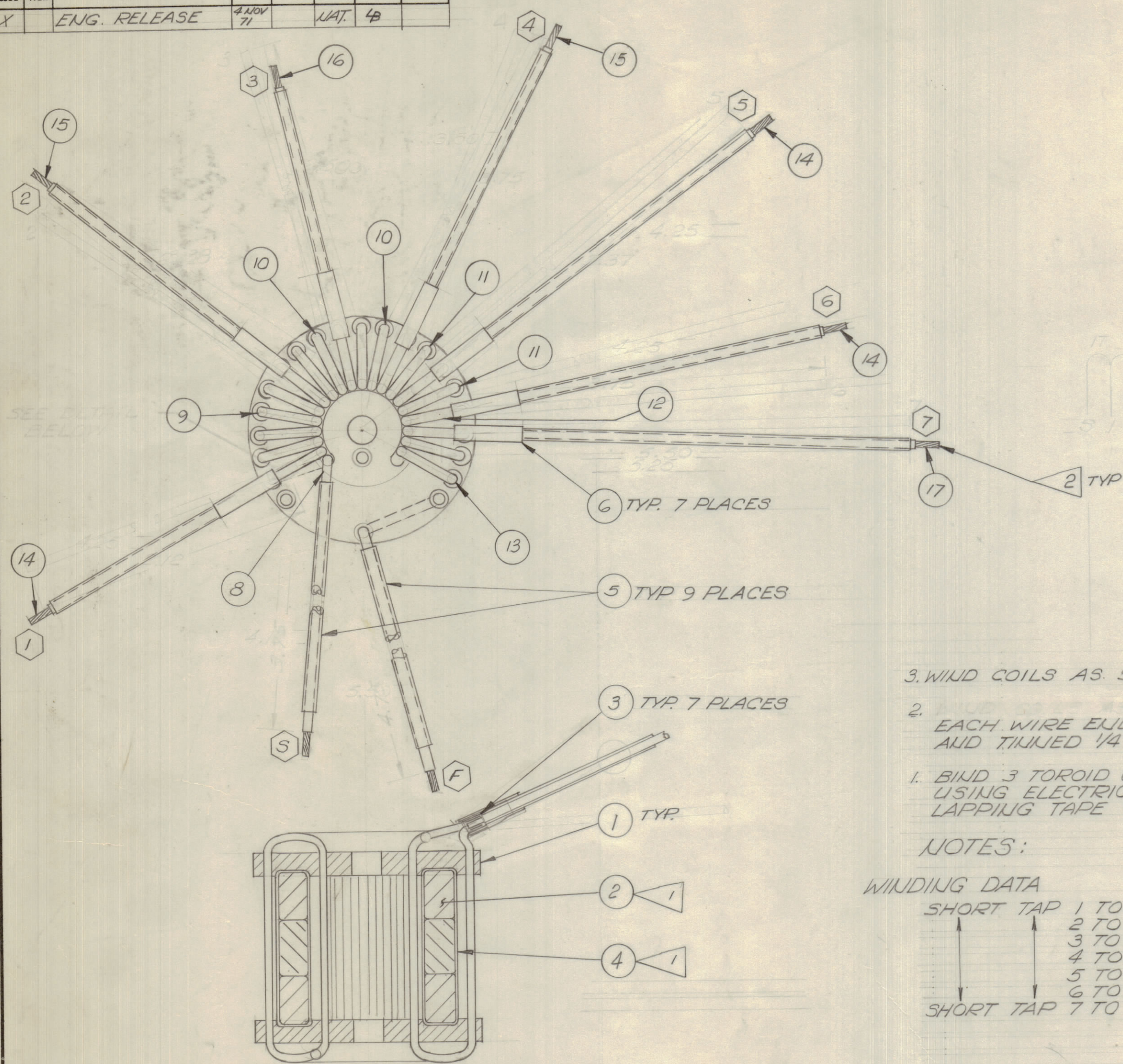


IF IT IS FOUND DESIRABLE TO CHANGE ANY TOLERANCE OR OTHER DETAIL SPECIFIED ON THIS DRAWING NOTIFY THE PURCHASER PROMPTLY.

MAXIMUM ALLOWABLE TOLERANCES HAVE BEEN DETERMINED AND DEVIATIONS WILL BE CAUSE FOR REJECTION. REMOVE ALL BURRS AND SHARP EDGES.

DIMENSIONS IN INCHES UNLESS OTHERWISE SPECIFIED

ISSUE	ITEM	CHANGED FROM	DATE	CH. NO.	DRAFTS	CHECKER	ENG. APP.
X		ENG. RELEASE	4 NOV 71		JAT.	LB	

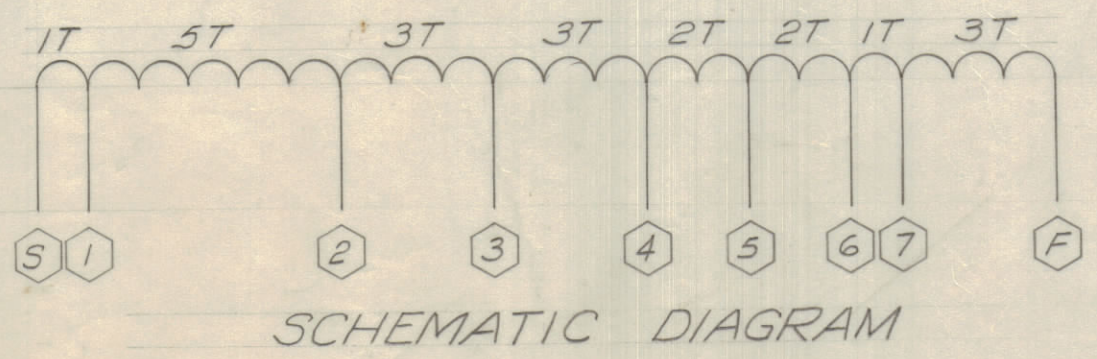


REQ	ITEM	PART NO.	DESCRIPTION	USED ON	REMARKS
2	1	PM10100	SPACER	CL10056	
3	2	CI 10013	CORE, TOROID	CL10056	
7	3	CL101-2	FERRULE	CL10056	
X	4	TA113-1-250	TAPE, ELECTRICAL	CL10056	
X	5	PX 370-8-7	SLEEVING, INSUL.	CL10056	
X	6	PX 830-12-1	SLEEVING, HEAT SHRINK	CL10056	
	7				
1	8	WI 10017	WIRE ELEC TEFLON x 10 1/4 IN.	CL10056	
1	9	WI 10017	WIRE ELEC TEFLON x 31 IN.	CL10056	
2	10	WI 10017	WIRE ELEC TEFLON x 19 IN.	CL10056	
2	11	WI 10017	WIRE ELEC TEFLON x 13 IN.	CL10056	
1	12	WI 10017	WIRE ELEC TEFLON x 7 IN.	CL10056	
1	13	WI 10017	WIRE ELEC TEFLON x 24 3/4 IN.	CL10056	
3	14	WI 10017	WIRE ELEC TEFLON x 4 IN.	CL10056	
2	15	WI 10017	WIRE ELEC TEFLON x 3 IN.	CL10056	
1	16	WI 10017	WIRE ELEC TEFLON x 2 3/4 IN.	CL10056	
1	17	WI 10017	WIRE ELEC TEFLON x 5 IN.	CL10056	
	18				
	19				
	20				

- WIND COILS AS SHOWN.
- EACH WIRE END TO BE STRIPPED 1/2 INCH AND TINNED 1/4 INCH.
- BIND 3 TOROID CORES (ITEM 2) TOGETHER USING ELECTRICAL TAPE (ITEM 4), OVERLAPPING TAPE 1/8 INCH.

NOTES:

WINDING DATA		S TO F INDUCTANCE	
SHORT TAP 1 TO S;	2 TO S;	5 TO F	18 μH
3 TO S;	4 TO S;	5 TO F	14 μH
5 TO S;	6 TO S;		10 μH
			7 μH
			5 μH
			3.5 μH
			2.5 μH
SHORT TAP 7 TO S;		5 TO F	1.15 μH



CL10056 X

TOLERANCES		SCALE: NOT TO SCALE
ALL OTHERS	DEC. DIM. ± .125 FRAC. DIM. ± .000 ANGULAR DIM. ± 0° 30'	DRILL, PUNCH, COMMERCIAL STOCK SIZES AND MANUFACTURERS TOLERANCES ARE NOT INCLUDED.

LPA 1 KD	115	A 11015	28 OCT 71
MODEL	PROJECT NO.	ASS'Y. NO.	DATE

STOCK SIZE		TMC (Canada) LIMITED OTTAWA ONTARIO	
MATERIAL		TANK COIL ASSEMBLY	
TYPE & TEMPER		THOMAS	
DRAWN		ELEC. DES. APP. MECH. DES. APP.	
HEAT TREAT. SPEC.		L. BROWN	
FINISH & SPEC. NO.		CHECKED FINAL APPROVAL	
		SHEET 1 OF 1	
		CL10056 X	